



# RAYLEIGH

POLL HEREFORDS

EST. 1957

## 12TH ANNUAL BULL & FEMALE SALE

SALE DAY FRIDAY 9TH JULY 2021  
INSPECTIONS 10AM - SALE 1PM



INSPECTION DAY FRIDAY 18TH JUNE 2021

# Nutrien Narrabri,

## Proud to be conducting the Rayleigh Poll Hereford Bull Sale

**Livestock:**      **Bruce Evans**                      **0428 921 599**  
                         **Matt Collett**                      **0427 311 415**

**Merchandise:** **Geoff Brown (Mng)**      **0429 395 776**  
                         **Gary Bennett**                      **0428 542 772**  
                         **Connor Parkes**                      **0418 738 316**

**Administration:** **Jenny Mapstone**                      **02 6799 1111**  
                         **Sandra Shephard**                      **02 6799 1111**

**Agronomy:**      **Dylan Verrier**                      **0427 704 124**

**Real Estate:**      **Paul Thomas**                      **0429 921 599**  
                         **James Thomas**                      **0418 975 048**  
                         **Karen Bourke**                      **02 6792 6000**  
                         **Lisa Smith**                      **02 6792 6000**

**Insurance:**      **Annette Cruickshank**      **0429 988 130**

  
*Ag Solutions®*



# **RAYLEIGH**

EST. 1957

POLL HEREFORDS

## **12TH ANNUAL ON PROPERTY BULL & FEMALE SALE**

### **Friday 9th July 2021**

**Inspections - 10am • Sale Starts - 1pm**

**• 28 Bulls**

**• 15 Registered Heifers**

**INSPECTION DAY**

**FRIDAY 18TH JUNE 2021**

**FROM 11am**



**Jeff, Robyn and Anna Holcombe**

**“Kombali”**

**640 Kaputar Road, Narrabri NSW 2390**

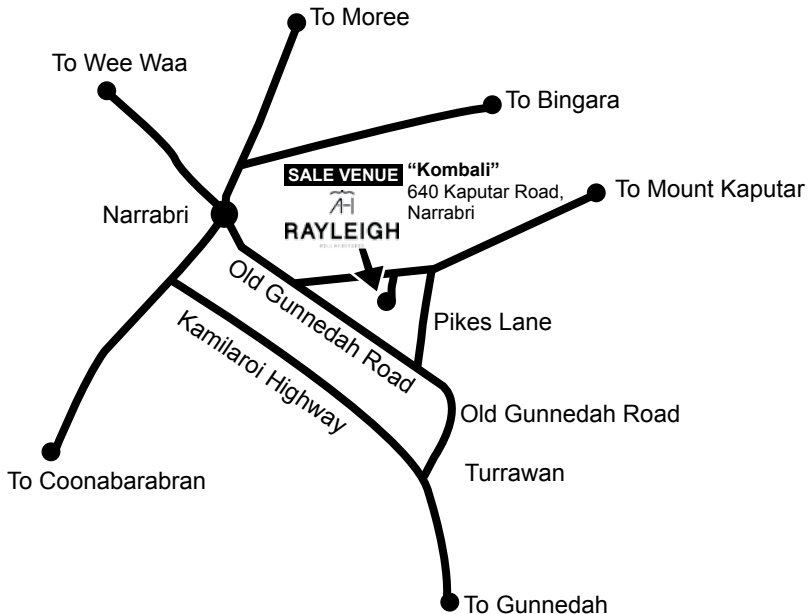
Jeff: 0427 285 226 • Robyn: 0428 285 226 • Anna: 0429 694 435

Email: [rayleigh8@bigpond.com](mailto:rayleigh8@bigpond.com) • [www.rayleighpollherefords.com.au](http://www.rayleighpollherefords.com.au)

**Selling Agent: Bruce Evans - Nutrien Phone: 0428 921 599**

**Stud Stock Agent: John Setttee - Nutrien Phone: 0408 297 368**

# SALE INFORMATION



## RAYLEIGH POLL HEREFORD STUD IS NOW AT A NEW LOCATION.

The Sale venue is located at **"Kombali" 640 Kaputar Road Narrabri NSW 2390**, which is approximately 7km from the centre of Narrabri.

- All cattle will be available for inspection from 10am on Sale Day, with the auction to commence at 1pm sharp. Prior inspection can be arranged by contacting the vendor or selling agents.
- The Sale will be conducted using the open cry auction system, with an online bidding option available through Auctions Plus. Cattle will be presented for auction via video.
- GST is to be added onto the purchase price at the fall of the auctioneer's hammer. You will be invoiced purchase price plus GST.
- Rebate of 2% will be offered to outside Agents introducing buyers in writing 24 hours prior to the Sale and attending the sale with the client.
- Free delivery is available up to 200kms. Delivery can be given at the completion of the sale and transport will be available on the day for those wishing to co-ordinate delivery.
- All care will be taken with the wellbeing of animals prior to delivery. However should unforeseen injury or illness occur, no responsibility will be accepted by the vendor. Insurance is recommended.



# SALE INFORMATION

- A Buyer's Instruction Slip must be completed by the Purchaser or representative and handed to the Auctioneer prior to leaving the sale. No verbal instructions will be accepted.
- There is no vendor insurance on sale animals. It will be the responsibility of the buyer to insure their purchases. Insurance representatives will be in attendance on sale day.
- All bulls have been 7 in 1, Pestiguard and Vibrio vaccinated and treated with Dectomax injectable.
- All bulls have been semen, morphology and soundness tested by Scott Parry, NorthWest Vets. Certificates are available on request.
- Visitors enter the cattle pens at their own risk. Children and prams must not enter the yards.
- All bulls have been DNA and SNIP tested for this year's sale. Should any additional testing be required, this will be completed upon request.
- We welcome any feedback as to how your bull is performing. This strengthens our future breeding program and ensures we continue to produce cattle suited to your needs.
- Should there be any issues with your purchases, we would like to be the first to know. All bulls come with a guarantee to naturally breed. If your bull fails to naturally breed within the first 6 months, a replacement bull or a credit (less salvage value) can be arranged. This excludes loss due to injury or illness sustained post sale day. Please contact us to discuss any issues and provide a veterinary certificate.
- Accommodation can be arranged by contacting the selling agents.
- Food and refreshments to be served on Sale Day.
- Please sign in upon arrival and adhere to the current Covid 19 regulations.
- Rayleigh Poll Herefords have a Biosecurity plan with a JBAS – 7.

## Disclaimer

Whilst all due care and attention has been paid to the accuracy in the compilation of this catalogue, neither the vendor nor selling agents or representatives therefore assume any responsibility whatsoever for the correctness, use or interpretation of the information on animals included in this catalogue. Potential buyers are advised to inspect animals prior to sale.

## **UPDATE FROM RAYLEIGH**

As many of you know, in early 2020, Rayleigh Poll Herefords officially moved from our home at Cryon, to "Kombali" and "Danbury", just outside of Narrabri, NSW. Initially, the purpose of shifting our beautiful cows further east was purely in pursuit of 'greener pastures' following the drought. However, soon after the move we began to recognise how well suited the country was to our stud operations, and the rest, as they say, is history. Robyn and Jeff officially moved up to live in the Danbury homestead shortly thereafter, and we are pleased to say that the novelty of having barista coffee a mere 15 kms away is still yet to wear off! Our daughter, Anna, remains at Rayleigh, where we will continue to send all of our weaner cattle to be grown out. We feel this time out at Rayleigh will be invaluable in helping us to maintain the same adaptability in our cattle that we have always strived to produce.

We cannot wait to welcome you to our new home for this year's Inspection Day and Sale Day.

## **OUR BREEDING OPERATION**

Rayleigh Poll Hereford Stud was established in 1957. Now with over 60 years of experience in the industry, we strive to produce lines of cattle that are renowned for both their performance and predictability.

The aim of the Stud has always been to breed functional and efficient cattle, noted for their ability to fatten on pasture and carry themselves through tough times. Structural soundness, doing ability and natural muscling are at the forefront of our program to ensure this vision is met. Maintaining productivity and fertility in dry times are further attributes integral in our program. Our bulls are adaptable, low fuss and ready to work.

## **ABOUT THE 2021 SALE DRAFT**

It is with both sadness and excitement that we share that this year's sale bulls will be the last drop of calves bred on 'Rayleigh'. We are exceptionally proud of this year's 'Q' drop bulls, who, despite being born in what could be the worst drought we that we have ever seen at Rayleigh, have absolutely never missed a beat. So much so that we were able to scan these bulls as yearlings in June last year, with the younger portion of the bulls only just cracking 300 days old. At this scanning, around one quarter of these bulls scan raw IMF percentages over 5, with a top value of 5.5%. On top of this, 40% of the bulls had raw EMA scans over 90cm<sup>2</sup>, with some exceeding 100 cm<sup>2</sup>. I am sure many will agree that these are exceptional results for any cohort of yearling bulls, let alone those born in a drought. Performance and carcass traits have been at the forefront of our operation for many years, however, our current reference sires have certainly played a huge role in the outstanding results of this drop of bulls.

Amongst this year's draft, you will find the first sons of Injemira Anzac L170 to be offered by Rayleigh. L170 is a sire that we admire for his combination of carcass power, structural correctness and industry leading EBVs. L170 is also backed by the maternal power of Injemira Happy Day D053, who bred exceptionally for Injemira. On sale day, we are positive that you will see that these traits are strongly expressed in his progeny.

The L170 progeny are complemented nicely by the second drop of bulls offered by Yalgoo Knickerbocker L205, who again display excellent natural muscle pattern and raw power. Not to be outdone is another exceptional drop of bulls sired by the great Bowen Calibre K207, whom most will be familiar with. Finally, this year we will again have low birth weight sons of Rayleigh Landslide L118. On top of this, this year we will also offer heifers sired by outcross sire Rayleigh Nifty N004.

We are confident that there will be a bull to fit all breeding operations in this year's sale draft. Please get in touch if you require any assistance selecting the right animal for you herd.

# REFERENCE SIRES



## Bowen Calibre K207- BWNK207

Sire: Days Calibre G74 (PP)

Dam: Bowen Hilda F8 (P)

| BW   | 200 | 400 | 600  | MCW  | MILK | SS   | CW  | EMA  | RIB  | RUMP | RBY% | IMF% |
|------|-----|-----|------|------|------|------|-----|------|------|------|------|------|
| +9.3 | +42 | +71 | +104 | +111 | +6   | +4.0 | +60 | +6.5 | +0.3 | +0.3 | +0.9 | +1.9 |

Index Values

| SSR    | NSR    | SBM    | NBT    |
|--------|--------|--------|--------|
| +\$158 | +\$144 | +\$155 | +\$116 |



## Yalgoo Knickerbocker L205 – SODL205

Sire: Yalgoo Break Out G075 (AI) (P)

Dam: Yalgoo Vanessa E054 (ET) (P)

| BW   | 200 | 400 | 600  | MCW | MILK | SS   | CW  | EMA  | RIB  | RUMP | RBY% | IMF% |
|------|-----|-----|------|-----|------|------|-----|------|------|------|------|------|
| +6.9 | +41 | +71 | +108 | +88 | +15  | +3.1 | +69 | +5.7 | +0.1 | +0.6 | +1.6 | +0.7 |

Index Values

| SSR    | NSR    | SBM    | NBT    |
|--------|--------|--------|--------|
| +\$176 | +\$155 | +\$163 | +\$112 |



## Rayleigh Landslide L118 – AHCL118

Sire: Yavenvale Benchmark B278 (P)

Dam: Rayleigh Alysia E103 (TW) (P)

| BW   | 200 | 400 | 600 | MCW | MILK | SS   | CW  | EMA  | RIB  | RUMP | RBY% | IMF% |
|------|-----|-----|-----|-----|------|------|-----|------|------|------|------|------|
| +1.2 | +27 | +45 | +59 | +49 | +15  | +2.4 | +39 | +0.5 | +1.1 | +1.6 | -0.5 | +0.4 |

Index Values

| SSR    | NSR    | SBM    | NBT    |
|--------|--------|--------|--------|
| +\$123 | +\$116 | +\$143 | +\$105 |



## Injemira Anzac L170 - IHSL170

Sire: Allendale Anzac E114 (PP)

Dam: Injemira Happy Day D053 (AI) (ET) (P)

| BW   | 200 | 400 | 600  | MCW | MILK | SS   | CW  | EMA  | RIB  | RUMP | RBY% | IMF% |
|------|-----|-----|------|-----|------|------|-----|------|------|------|------|------|
| +7.3 | +45 | +74 | +105 | +83 | +18  | +1.6 | +70 | +6.2 | +1.7 | +2.3 | +0.5 | +1.8 |

Index Values

| SSR    | NSR    | SBM    | NBT    |
|--------|--------|--------|--------|
| +\$166 | +\$149 | +\$166 | +\$121 |

## Rayleigh Nifty N004 – AHCN004

Sire: Bowen Extremist E96

Dam: Courallie Prudence L503

| BW   | 200 | 400 | 600 | MCW | MILK | SS   | CW  | EMA  | RIB  | RUMP | RBY% | IMF% |
|------|-----|-----|-----|-----|------|------|-----|------|------|------|------|------|
| +0.4 | +30 | +58 | +79 | +74 | +19  | +2.9 | +59 | +3.9 | -0.1 | +0.5 | +1.6 | +0.2 |

Index Values

| SSR    | NSR    | SBM    | NBT    |
|--------|--------|--------|--------|
| +\$147 | +\$144 | +\$178 | +\$138 |

# FUTURE REFERENCE SIRES



## Injemira Techno P271 – IHSP271

**Sire:** Koanui Techno 3062 (IMP NZL) (PP)

**Dam:** Injemira Happy Day K332 (P)

| BW   | 200 | 400 | 600  | MCW | MILK | SS   | CW  | EMA  | RIB  | RUMP | RBY% | IMF% |
|------|-----|-----|------|-----|------|------|-----|------|------|------|------|------|
| +5.2 | +45 | +75 | +107 | +89 | +21  | +3.2 | +75 | +5.6 | +0.6 | +0.6 | +1.1 | +1.8 |

**Index Values**

| SSR    | NSR    | SBM    | NBT    |
|--------|--------|--------|--------|
| +\$188 | +\$169 | +\$187 | +\$138 |



## Eathorpe Prowler P037 – ETHP037

**Sire:** Koanui Techno 3062 (IMP NZL) (PP)

**Dam:** Yalgoo Blush A036 (P)

| BW   | 200 | 400 | 600  | MCW | MILK | SS   | CW  | EMA  | RIB  | RUMP | RBY% | IMF% |
|------|-----|-----|------|-----|------|------|-----|------|------|------|------|------|
| +7.8 | +45 | +71 | +103 | +84 | +19  | +2.9 | +67 | +5.4 | +0.9 | +1.0 | +1.3 | +1.7 |

**Index Values**

| SSR    | NSR    | SBM    | NBT    |
|--------|--------|--------|--------|
| +\$185 | +\$167 | +\$189 | +\$140 |



## Injemira Fortune M152 Q193 – IHSQ193

**Sire:** Injemira Fortune M152

**Dam:** Injemira Cherry Ripe N243

| BW   | 200 | 400 | 600 | MCW | MILK | SS   | CW  | EMA  | RIB  | RUMP | RBY% | IMF% |
|------|-----|-----|-----|-----|------|------|-----|------|------|------|------|------|
| +2.0 | +38 | +65 | +87 | +56 | +27  | +3.0 | +74 | +6.3 | +1.2 | +0.8 | +1.6 | +1.8 |

**Index Values**

| SSR    | NSR    | SBM    | NBT    |
|--------|--------|--------|--------|
| +\$189 | +\$177 | +\$215 | +\$164 |



## Injemira Fortune M152 – IHSM152

**Sire:** EFBEEF U208 Fortune Y848

**Dam:** Injemira Happy Day J042

| BW   | 200 | 400 | 600 | MCW | MILK | SS   | CW  | EMA  | RIB  | RUMP | RBY% | IMF% |
|------|-----|-----|-----|-----|------|------|-----|------|------|------|------|------|
| -0.7 | +36 | +61 | +81 | +40 | +23  | +2.9 | +81 | +7.7 | +2.1 | +2.0 | +1.2 | +2.5 |

**Index Values**

| SSR    | NSR    | SBM    | NBT    |
|--------|--------|--------|--------|
| +\$201 | +\$197 | +\$234 | +\$181 |

# BREEDPLAN MADE EASY

**Breedplan** is a performance evaluation program that compares bulls “on a level playing field” for a number of important commercial traits.

The difference between a bull's genetics and the breed benchmark for a range of traits is reported as an **Estimated Breeding Value (EBV)** - an estimate of how a bull will perform as a parent rather than how he looks on the day.

EBVs can be positive (+) or negative (-), ie, above or below the breed benchmark of zero.

EBVs are calculated from the available performance information on the animal, its parents, progeny and its close relatives within the breed.

The information is adjusted for age, dam age, and for differences between herds, years, season of calving, management effects and for mating and selection biases. The heritability of the trait is also taken into account.

## EBVs - what do they tell me about a bull

### BIRTH

**Birth Weight:** The Birth Weight EBV (kg) is based on the measured birth weight of animals, adjusted for dam age. The lower the value the lighter the calf at birth and the lower the likelihood of a difficult birth. This is particularly important when selecting sires for use over heifers.

### FERTILITY

**Scrotal Size:** The Scrotal Size EBV (cm) is an indicator of male fertility. Higher (positive) EBVs indicate higher fertility. Higher SS EBVs are also positively associated with female fertility through earlier age of puberty.

### GROWTH

**Milk:** 200-Day Milk EBV (kg) is an estimate of the contribution that a dam makes to the 200 day weight of her progeny. For sires, this is an indication of the contribution that his daughters will make to the 200 day weight of their calves.

**200-Day Growth:** The 200-Day EBV (kg) is calculated from the weight of animals taken between 80 and 300 days of age. Values are adjusted to 200 days and for dam age. This EBV is the best single estimate of an animal's genetic merit for growth to early ages (ie. 8-10 months).

**400-Day Weight:** The 400-Day Weight EBV (kg) is calculated from the weight of progeny taken between 301 and 500 days of age, adjusted to 400 days and for dam age. This EBV is the best single estimate of an animal's genetic merit for yearling weight.

**600-Day Weight:** The 600-Day Weight EBV (kg) is calculated from the weight of progeny taken between 501 and 900 days of age, adjusted to 600 days and for dam age. This EBV is the best single estimate of an animal's genetic merit for growth beyond yearling age.

### CARCASE

**Eye Muscle Area:** The EMA EBV (cm<sup>2</sup>) estimates genetic differences in eye muscle area at the 12/13th rib site of a 300kg dressed carcass. More positive EBVs indicate better muscling on animals.

**Rib Fat:** The Rib Fat EBV (mm) estimates the genetic differences in fat depth at the 12/13th rib in a 300kg dressed carcass. More positive EBVs indicate more subcutaneous fat and earlier maturity.

**Rump Fat:** The Rump Fat EBV (mm) estimates the genetic differences in fat depth at the P8 site of a 300kg dressed carcass. More positive EBVs indicate more subcutaneous fat and earlier maturity.

**Intramuscular Fat Percent:** The IMF% EBV (%) is an estimate of the genetic difference in the percentage of intra-muscular fat at the 12/13th rib site in a 300kg carcass. More positive EBVs indicate higher marbling.

**BREED AVERAGE** - To aid in your interpretation of the GROUP BREEDPLAN EBV'S in this catalogue please find below the Breed Average EBV's for the 2019 drop calves.

| BW   | 200 | 400 | 600 | MCW | MILK | SS   | CW  | EMA  | RIB  | RUMP | RBY% | IMF% |
|------|-----|-----|-----|-----|------|------|-----|------|------|------|------|------|
| +4.1 | +33 | +55 | +78 | +67 | +17  | +2.0 | +52 | +3.5 | +0.7 | +0.8 | +0.8 | +0.5 |

The Group Breedplan Estimated Breeding Values contained in this catalogue were supplied by the Agricultural Business Research Institute from data supplied by the breeders. Neither Herefords Australia Limited nor the ABRI oversee or audit the collection of this data. Log on to [www.herefordsaustralia.com.au](http://www.herefordsaustralia.com.au) for a full description and explanation of all Breedplan, EBVs, Accuracies, Selection Indexes and Comparing Animals.



## AUSTRALIAN HEREFORD SELECTION INDEXES

THERE ARE CURRENTLY FOUR DIFFERENT SELECTION INDEXES CALCULATED FOR AUSTRALIAN HEREFORD ANIMALS. THESE ARE:

- SOUTHERN SELF-REPLACING INDEX
- SOUTHERN BALDY MATERNAL INDEX
- NORTHERN SELF-REPLACING INDEX
- NORTHERN BALDY TERMINAL INDEX

Each selection index describes a different production/market scenario and relates to a typical commercial herd using Hereford bulls. Producers are advised to use the selection index that most closely aligns to their production system. All four selection indexes are focussed on maintaining and improving eating quality. Significant premiums are applied for increasing marble score up to a marble score of 3. Pressure is also applied to early life growth to maintain low ossification scores and good MSA compliance. In addition, each selection index targets the following specifications.

### SOUTHERN SELF-REPLACING INDEX

Estimates the genetic differences between animals in net profitability per cow joined in a commercial self-replacing straight bred Hereford herd targeting the domestic market. Daughters are retained for breeding and so maternal traits are of importance. Steers are slaughtered at 20 to 22 months of age to produce 300 kg carcasses with 10 mm P8 fat depth. A moderate cost is applied for cow feed costs during the annual feed shortage period.

### NORTHERN SELF-REPLACING INDEX

Estimates the genetic differences between animals in net profitability per cow joined in a commercial self-replacing herd targeting the domestic market. This index is suitable for use by both straight bred Hereford herds and in crossbreeding programs where Hereford bulls are being used over a *Bos indicus* based cow herd (e.g. flatback). Daughters are retained for breeding and so maternal traits are of importance. Steers are slaughtered at 20 to 22 months of age to produce 340 kg carcasses with 12 mm P8 fat depth. A high cost is applied for cow feed costs during the annual feed shortage period.

### SOUTHERN BALDY MATERNAL INDEX

Estimates the genetic differences between animals in net profitability per cow joined in a commercial crossbred herd using Hereford bulls over *Bos taurus* females (e.g. Angus). A portion of the heifers are retained for breeding and so maternal traits are of importance. The steers and surplus heifers are destined for slaughter at 20 to 22 months of age. Steers produce 300 kg carcasses with 10 mm of P8 fat depth, while heifers produce 270 kg carcasses with 12 mm of P8 fat depth. A moderate cost is applied for cow feed costs during the annual feed shortage period.

### NORTHERN BALDY TERMINAL INDEX

Estimates the genetic differences between animals in net profitability per cow joined in a commercial crossbred herd (e.g. flatback) using Hereford bulls over *Bos indicus*/Tropical females (e.g. Santa Gertrudis) where all progeny (male and female) are destined for slaughter. Steers and heifers are slaughtered at 20 to 22 months of age. Steers produce 340 kg carcasses with 14 mm of P8 fat depth while heifers produce 300 kg carcasses with 17 mm of P8 fat depth.

All selection index values have been derived using BreedObject technology. More detailed information regarding each selection index is provided on the following pages.

If you have any further queries regarding Hereford Selection Indexes, please do not hesitate to contact staff at Herefords Australia or your BREEDPLAN processing centre.

### SELECTION INDEX VALUES BREED AVERAGES

| Southern Self Replacing Index | Northern Self Replacing Index | Southern Baldy Maternal Index | Northern Baldy Terminal Index |
|-------------------------------|-------------------------------|-------------------------------|-------------------------------|
| +130                          | +115                          | +131                          | +96                           |



# AuctionsPlus

## How to Register and Bid on AuctionsPlus

1

Go to **www.auctionsplus.com.au** to register at least 48 hours before the sale.

2

Select **"Sign Up"** in the top right hand corner.

3

Fill out your name, mobile number, email address and create a password.

4

Go to your emails and confirm the account.

5

Return to AuctionsPlus and log in.

6

Select **"Dashboard"** and then select **"Request Approval to Buy"**.

7

Fill in buyer details and once completed go back to Dashboard.

8

Complete buyer induction module (approx. 30 minutes).

9

AuctionsPlus will email you to let you know that your account has been approved.

10

Log in on sale day and connect to auction.

11

Bid using the two-step process – unlock the bid button and bid at that price.

12

If you are successful, the selling agent will contact you post sale to organise delivery and payment.

For more information please contact us on:

Phone: (02) 9262 4222

Email: [info@auctionsplus.com.au](mailto:info@auctionsplus.com.au)

## Lot 1 RAYLEIGH QUINELLA Q065 (S)

Tattoo: Q065

Rego No: AHCQ065

Born: 17/05/2019

ALLEDALE YACKA (AI) (P)

ALLEDALE ANZAC E114 (PP)

ALLEDALE DAWN B22 (AI) (ET) (P)

Sire: INJEMIRA ANZAC L170 (AI) (ET) (PP)

KAIRURU ABERDEEN 03 0047 (IMP NZL) (P)

INJEMIRA HAPPY DAY D053 (AI) (ET) (P)

INJEMIRA HAPPY DAY Y012 (H)

CANNAWIGRA COMMANDER Z51 (S)

WHIM PARK DESTROYER D035 (AI) (S)

NOROLLE V1 NIKKI Z78 (AI) (P)

Dam: RAYLEIGH L DESIRE H75 (P)

HEATHERDALE BONANZA Z48 (AI) (P)

RAYLEIGH L BONNIE E8 (AI) (P)

RAYLEIGH L UABBA A90 (P)

| May 2021 Hereford BREEDPLAN |     |             |      |             |      |             |     |             |      |      |      |      |
|-----------------------------|-----|-------------|------|-------------|------|-------------|-----|-------------|------|------|------|------|
| BW                          | 200 | 400         | 600  | MCW         | Milk | SS          | Cwt | EMA         | Rib  | RUMP | RBY% | IMF% |
| +7.7                        | +45 | +79         | +115 | +102        | +17  | +1.1        | +77 | +6.2        | +0.5 | +0.3 | +1.2 | +1.6 |
| 71%                         | 66% | 66%         | 66%  | 59%         | 54%  | 75%         | 57% | 49%         | 54%  | 57%  | 50%  | 54%  |
| Selection Index Values:     |     | SSR: +\$169 |      | NSR: +\$146 |      | SBM: +\$174 |     | NBT: +\$131 |      |      |      |      |

Traits Observed: CE,BWT,200WT,400WT(x2),SS,FAT,EMA,IMF,Genomics

Notes: A large framed, structurally correct sire with great length of body and good cosmetics. Top 5% 200, 400, 600 DW & EMA. Top 10% IMF. Birth Weight 48kg, EP 100/100. Scurred. Stud Sire prospect.

Purchaser: ..... Price \$:.....

## Lot 2 RAYLEIGH QUINCY Q017 (PP)

Tattoo: Q017

Rego No: AHCQ017

Born: 09/04/2019

ALLEDALE WATERHOUSE D1 (PP)

DAYS CALIBRE G74 (PP)

ALLEDALE DAWN C62 (AI) (P)

Sire: BOWEN CALIBRE K207 (AI) (ET) (PP)

MAUNGAHINA KINGDOM BAY 070073 (IMP NZL) (P)

BOWEN HILDA F8 (AI) (P)

BOWEN HILDA A101 (AI) (P)

CANNAWIGRA COMMANDER Z51 (S)

WHIM PARK DESTROYER D035 (AI) (S)

NOROLLE V1 NIKKI Z78 (AI) (P)

Dam: RAYLEIGH S DESIRE K50 (P)

RAYLEIGH ALBERTA A4 (AI) (P)

RAYLEIGH L ALYSIA F72 (P)

RAYLEIGH L TIFFANY D39 (P)

| May 2021 Hereford BREEDPLAN |     |             |     |             |      |             |     |             |      |      |      |      |
|-----------------------------|-----|-------------|-----|-------------|------|-------------|-----|-------------|------|------|------|------|
| BW                          | 200 | 400         | 600 | MCW         | Milk | SS          | Cwt | EMA         | Rib  | RUMP | RBY% | IMF% |
| +5.5                        | +34 | +57         | +83 | +79         | +11  | +2.7        | +52 | +4.9        | +1.6 | +2.2 | -0.4 | +1.5 |
| 71%                         | 67% | 67%         | 68% | 60%         | 56%  | 77%         | 58% | 50%         | 55%  | 59%  | 52%  | 55%  |
| Selection Index Values:     |     | SSR: +\$135 |     | NSR: +\$122 |      | SBM: +\$136 |     | NBT: +\$101 |      |      |      |      |

Traits Observed: CE,BWT,200WT,400WT(x2),SS,FAT,EMA,IMF,Genomics

Notes: Q017 has been an absolute standout since birth and it's easy to see why. A long, correct bull with a heap of muscle and power, wrapped in a lovely soft dark coat. Top 10% IMF. Top 20% EMA, Rib & Rump Fat. Birth Weight 41kg, EP 100/100. Stud Sire prospect.

Purchaser: ..... Price \$:.....



## Lot 3 RAYLEIGH QUEENSTOWN Q082 (S)

Tattoo: Q082

Rego No: AHCQ082

Born: 05/06/2019

ALLEDALE YACKA (AI) (P)  
ALLEDALE ANZAC E114 (PP)  
ALLEDALE DAWN B22 (AI) (ET) (P)

Sire: **INJEMIRA ANZAC L170 (AI) (ET) (PP)**  
KAIRURU ABERDEEN 03 0047 (IMP NZL) (P)  
INJEMIRA HAPPY DAY D053 (AI) (ET) (P)  
INJEMIRA HAPPY DAY Y012 (H)

CANNAWIGRA COMMANDER Z51 (S)  
WHIM PARK DESTROYER D035 (AI) (S)  
NOROLLE V1 NIKKI Z78 (AI) (P)

Dam: **RAYLEIGH G DESIRE H35 (P)**  
ALLEDALE POSEIDON Z110 (P)  
RAYLEIGH C POSIE D61 (P)  
RAYLEIGH G IRIS X19 (P)

| May 2021 Hereford BREEDPLAN |     |             |     |             |      |             |     |             |      |      |      |      |
|-----------------------------|-----|-------------|-----|-------------|------|-------------|-----|-------------|------|------|------|------|
| BW                          | 200 | 400         | 600 | MCW         | Milk | SS          | Cwt | EMA         | Rib  | RUMP | RBY% | IMF% |
| +5.6                        | +32 | +55         | +80 | +65         | +12  | +0.7        | +51 | +4.0        | +0.1 | -0.4 | +1.0 | +0.5 |
| 70%                         | 66% | 66%         | 66% | 59%         | 53%  | 74%         | 57% | 48%         | 54%  | 57%  | 50%  | 54%  |
| Selection Index Values:     |     | SSR: +\$125 |     | NSR: +\$107 |      | SBM: +\$137 |     | NBT: +\$100 |      |      |      |      |

Traits Observed: CE,BWT,200WT,400WT(x2),SS,FAT,EMA,IMF,Genomics

Notes: A extremely correct, well balanced sire who carries great length and muscling. Q082 is a very easy doing, moderate framed bull. Birth Weight 40kg, EP 100/100. Scurred.

Purchaser: ..... Price \$:.....

## Lot 4 RAYLEIGH QUALIFIER Q108 (S)

Tattoo: Q108

Rego No: AHCQ108

Born: 23/08/2019

ALLEDALE YACKA (AI) (P)  
ALLEDALE ANZAC E114 (PP)  
ALLEDALE DAWN B22 (AI) (ET) (P)

Sire: **INJEMIRA ANZAC L170 (AI) (ET) (PP)**  
KAIRURU ABERDEEN 03 0047 (IMP NZL) (P)  
INJEMIRA HAPPY DAY D053 (AI) (ET) (P)  
INJEMIRA HAPPY DAY Y012 (H)

SOUTH BUKALONG WALLACE 2 (P)  
YAVENVALE BENCHMARK B278 (P)  
YAVENVALE MISS MINERVA W051 (AI) (H)

Dam: **RAYLEIGH L BELLA H81 (P)**  
RAYLEIGH ALBERTA A4 (AI) (P)  
RAYLEIGH L ALYSIA F12 (P)  
RAYLEIGH L POSIE C77 (TW) (P)

| May 2021 Hereford BREEDPLAN |     |             |     |             |      |             |     |             |      |      |      |      |
|-----------------------------|-----|-------------|-----|-------------|------|-------------|-----|-------------|------|------|------|------|
| BW                          | 200 | 400         | 600 | MCW         | Milk | SS          | Cwt | EMA         | Rib  | RUMP | RBY% | IMF% |
| +3.8                        | +34 | +57         | +75 | +55         | +16  | +1.8        | +52 | +3.5        | +2.2 | +3.1 | -0.4 | +0.7 |
| 67%                         | 66% | 66%         | 67% | 60%         | 53%  | 65%         | 58% | 48%         | 54%  | 58%  | 50%  | 55%  |
| Selection Index Values:     |     | SSR: +\$141 |     | NSR: +\$132 |      | SBM: +\$151 |     | NBT: +\$108 |      |      |      |      |

Traits Observed: CE,BWT,200WT,400WT(x2),SS,FAT,EMA,IMF,Genomics

Notes: Youngest bull of the drop. An exciting young sire out of H81, one of our donor cows. A correct, heavily muscled bull with a great head, eye and all over cosmetics. Top 5% for Rib & Rump Fats. Birth Weight 43kg. EP 100/100. One very small Scur. Stud Sire prospect.

Purchaser: ..... Price \$:.....

## Lot 5 RAYLEIGH QUAMBY Q021 (P)

Tattoo: Q021

Rego No: AHCQ021

Born: 11/04/2019

ALLEDALE WATERHOUSE D1 (PP)

DAYS CALIBRE G74 (PP)

ALLEDALE DAWN C62 (AI) (P)

Sire: **BOWEN CALIBRE K207 (AI) (ET) (PP)**

MAUNGAHINA KINGDOM BAY 070073 (IMP NZL) (P)

BOWEN HILDA F8 (AI) (P)

BOWEN HILDA A101 (AI) (P)

SOUTH BUKALONG WALLACE 2 (P)

YAVENVALE BENCHMARK B278 (P)

YAVENVALE MISS MINERVA W051 (AI) (H)

Dam: **RAYLEIGH L BELLA H93 (P)**

DEBARRY TRIBULUS 2 (P)

RAYLEIGH L TIFFANY D21 (P)

RAYLEIGH LADY 8 Q113 (P)

| May 2021 Hereford BREEDPLAN |     |             |     |             |      |             |     |             |      |      |      |      |
|-----------------------------|-----|-------------|-----|-------------|------|-------------|-----|-------------|------|------|------|------|
| BW                          | 200 | 400         | 600 | MCW         | Milk | SS          | Cwt | EMA         | Rib  | RUMP | RBY% | IMF% |
| +5.9                        | +36 | +62         | +87 | +67         | +15  | +3.2        | +55 | +5.0        | +1.6 | +2.5 | -0.2 | +1.7 |
| 71%                         | 67% | 67%         | 67% | 60%         | 56%  | 76%         | 58% | 50%         | 54%  | 58%  | 51%  | 55%  |
| Selection Index Values:     |     | SSR: +\$168 |     | NSR: +\$154 |      | SBM: +\$170 |     | NBT: +\$119 |      |      |      |      |

Traits Observed: CE,BWT,200WT,400WT(x2),SS,FAT,EMA,IMF,Genomics

Notes: A well structured sire with extreme length and depth, smooth shoulders and great cosmetics. Top 5% IMF. Top 10% Rump fat. Top 20% EMA & Rib fat. Birth Weight 42kg. EP 100/100. Stud Sire prospect.

Purchaser: ..... Price \$:.....

## Lot 6 RAYLEIGH QUINTON Q039 (S)

Tattoo: Q039

Rego No: AHCQ039

Born: 21/04/2019

ALLEDALE WATERHOUSE D1 (PP)

DAYS CALIBRE G74 (PP)

ALLEDALE DAWN C62 (AI) (P)

Sire: **BOWEN CALIBRE K207 (AI) (ET) (PP)**

MAUNGAHINA KINGDOM BAY 070073 (IMP NZL) (P)

BOWEN HILDA F8 (AI) (P)

BOWEN HILDA A101 (AI) (P)

CANNAWIGRA COMMANDER Z51 (S)

WHIM PARK DESTROYER D035 (AI) (S)

NOROLLE V1 NIKKI Z78 (AI) (P)

Dam: **RAYLEIGH I DESIRE H92 (P)**

ALLEDALE POSEIDON Z110 (P)

RAYLEIGH I POSIE E19 (P)

RAYLEIGH I UABBA Y20 (P)

| May 2021 Hereford BREEDPLAN |     |             |     |             |      |             |     |            |      |      |      |      |
|-----------------------------|-----|-------------|-----|-------------|------|-------------|-----|------------|------|------|------|------|
| BW                          | 200 | 400         | 600 | MCW         | Milk | SS          | Cwt | EMA        | Rib  | RUMP | RBY% | IMF% |
| +6.8                        | +33 | +57         | +85 | +99         | +7   | +3.0        | +49 | +4.2       | +0.1 | -0.1 | +0.9 | +0.8 |
| 71%                         | 68% | 67%         | 68% | 61%         | 57%  | 76%         | 59% | 50%        | 55%  | 59%  | 52%  | 56%  |
| Selection Index Values:     |     | SSR: +\$114 |     | NSR: +\$101 |      | SBM: +\$111 |     | NBT: +\$84 |      |      |      |      |

Traits Observed: CE,BWT,200WT,400WT(x2),SS,FAT,EMA,IMF,Genomics

Notes: One Jeff's pick bulls in the sale, structurally correct with a heap of length, muscle and depth. A well balanced sire. Birth Weight 42kg. EP 100/100. Scurred.

Purchaser: ..... Price \$:.....

## Lot 7 RAYLEIGH QUE Q075 (PP)

Tattoo: Q075

Rego No: AHCQ075

Born: 28/05/2019

ALLEDALE YACKA (AI) (P)  
ALLEDALE ANZAC E114 (PP)  
ALLEDALE DAWN B22 (AI) (ET) (P)

Sire: **INJEMIRA ANZAC L170 (AI) (ET) (PP)**  
KAIRURU ABERDEEN 03 0047 (IMP NZL) (P)  
INJEMIRA HAPPY DAY D053 (AI) (ET) (P)  
INJEMIRA HAPPY DAY Y012 (H)

MOUNTAIN VALLEY GAMBLER G14 (P)  
MOUNTAIN VALLEY KARABAR K203 (AI) (ET) (PP)  
MOUNTAIN VALLEY SHAMROCK C12 (AI) (P)

Dam: **RAYLEIGH J KARA M68 (P)**  
DEBARRY TRIBULUS 2 (P)  
RAYLEIGH J TIFFANY D73 (P)  
RAYLEIGH J SHAMROCK Z18 (P)

| May 2021 Hereford BREEDPLAN |     |             |      |             |      |             |     |            |      |      |      |      |
|-----------------------------|-----|-------------|------|-------------|------|-------------|-----|------------|------|------|------|------|
| BW                          | 200 | 400         | 600  | MCW         | Milk | SS          | Cwt | EMA        | Rib  | RUMP | RBY% | IMF% |
| +11.6                       | +56 | +92         | +135 | +133        | +19  | +2.1        | +78 | +3.6       | +0.5 | +0.7 | +0.6 | +0.3 |
| 70%                         | 65% | 64%         | 65%  | 58%         | 52%  | 63%         | 56% | 46%        | 52%  | 56%  | 48%  | 53%  |
| Selection Index Values:     |     | SSR: +\$140 |      | NSR: +\$106 |      | SBM: +\$124 |     | NBT: +\$92 |      |      |      |      |

Traits Observed: CE,BWT,200WT,400WT(x2),SS,FAT,EMA,IMF,Genomics

Notes: An extreme growth sire, which has consistently been one of the heaviest bulls of the drop. A long bodied Injemira Anzac L170 son with great eye appeal, terrific length of neck and head carriage and nice smooth shoulders. Top 1% for 200, 400 and 600 DW. Birth Weight 55kg. EP 100/100.

Purchaser: ..... Price \$:.....

## Lot 8 RAYLEIGH QOM Q071 (PP)

Tattoo: Q071

Rego No: AHCQ071

Born: 21/05/2019

ALLEDALE YACKA (AI) (P)  
ALLEDALE ANZAC E114 (PP)  
ALLEDALE DAWN B22 (AI) (ET) (P)

Sire: **INJEMIRA ANZAC L170 (AI) (ET) (PP)**  
KAIRURU ABERDEEN 03 0047 (IMP NZL) (P)  
INJEMIRA HAPPY DAY D053 (AI) (ET) (P)  
INJEMIRA HAPPY DAY Y012 (H)

CANNAWIGRA COMMANDER Z51 (S)  
WHIM PARK DESTROYER D035 (AI) (S)  
NOROLLE V1 NIKKI Z78 (AI) (P)

Dam: **RAYLEIGH L DESIRE J100 (P)**  
WIRANYA EXMOOR (P)  
RAYLEIGH L. EMMA Y65 (P)  
RAYLEIGH NICOLA (P)

| May 2021 Hereford BREEDPLAN |     |             |     |            |      |             |     |            |      |      |      |      |
|-----------------------------|-----|-------------|-----|------------|------|-------------|-----|------------|------|------|------|------|
| BW                          | 200 | 400         | 600 | MCW        | Milk | SS          | Cwt | EMA        | Rib  | RUMP | RBY% | IMF% |
| +6.2                        | +31 | +52         | +75 | +63        | +12  | -0.3        | +47 | +5.0       | +1.3 | +1.6 | +0.5 | +0.9 |
| 70%                         | 66% | 65%         | 66% | 59%        | 53%  | 75%         | 57% | 48%        | 53%  | 57%  | 50%  | 54%  |
| Selection Index Values:     |     | SSR: +\$109 |     | NSR: +\$95 |      | SBM: +\$105 |     | NBT: +\$75 |      |      |      |      |

Traits Observed: CE,BWT,200WT,400WT(x2),SS,FAT,EMA,IMF,Genomics

Notes: A bull with loads of length, depth and thickness. A lovely coated bull with a clean polled head. Top 20% EMA, Rib & Rump Fats. Birth Weight 51kg. EP 95/100.

Purchaser: ..... Price \$:.....

## Lot 9 RAYLEIGH QUIVER Q077 (P)

Tattoo: Q077

Rego No: AHCQ077

Born: 30/05/2019

ALLEDALE YACKA (AI) (P)  
ALLEDALE ANZAC E114 (PP)  
ALLEDALE DAWN B22 (AI) (ET) (P)

Sire: **INJEMIRA ANZAC L170 (AI) (ET) (PP)**  
KAIRURU ABERDEEN 03 0047 (IMP NZL) (P)  
INJEMIRA HAPPY DAY D053 (AI) (ET) (P)  
INJEMIRA HAPPY DAY Y012 (H)

CANNAWIGRA COMMANDER Z51 (S)  
WHIM PARK DESTROYER D035 (AI) (S)  
NOROLLE V1 NIKKI Z78 (AI) (P)

Dam: **RAYLEIGH I DESIRE J92 (P)**  
ALLEDALE POSEIDON Z110 (P)  
RAYLEIGH I POSIE E19 (P)  
RAYLEIGH I UABBA Y20 (P)

| May 2021 Hereford BREEDPLAN |     |             |      |            |      |             |     |            |      |      |      |      |
|-----------------------------|-----|-------------|------|------------|------|-------------|-----|------------|------|------|------|------|
| BW                          | 200 | 400         | 600  | MCW        | Milk | SS          | Cwt | EMA        | Rib  | RUMP | RBY% | IMF% |
| +10.4                       | +46 | +67         | +102 | +91        | +15  | +1.8        | +55 | +3.8       | +1.1 | +1.5 | +0.2 | +0.8 |
| 70%                         | 66% | 66%         | 67%  | 60%        | 54%  | 71%         | 58% | 49%        | 55%  | 58%  | 51%  | 55%  |
| Selection Index Values:     |     | SSR: +\$123 |      | NSR: +\$98 |      | SBM: +\$106 |     | NBT: +\$71 |      |      |      |      |

Traits Observed: CE,BWT,200WT,400WT(x2),SS,FAT,EMA,IMF,Genomics

Notes: A smooth shouldered bull with great length and structure that always catches your eye in the mob. Q077 has plenty of length of neck and is clean polled. Top 5% 200 DW. Top 10% 600 DW. Top 20% 400 DW. Birth Weight 57kg. EP 100/100.

Purchaser: .....

Price \$:.....

## Lot 10 RAYLEIGH QUAKE Q046 (P)

Tattoo: Q046

Rego No: AHCQ046

Born: 02/05/2019

SOUTH BUKALONG WALLACE 2 (P)  
YAVENVALE BENCHMARK B278 (P)  
YAVENVALE MISS MINERVA W051 (AI) (H)

Sire: **RAYLEIGH LANDSLIDE L118 (TW) (P)**  
RAYLEIGH ALBERTA A4 (AI) (P)  
RAYLEIGH ALYSIA E103 (TW) (P)  
RAYLEIGH L SHAMROCK A26 (P)

MOUNTAIN VALLEY GAMBLER G14 (P)  
MOUNTAIN VALLEY KARABAR K203 (AI) (ET) (PP)  
MOUNTAIN VALLEY SHAMROCK C12 (AI) (P)

Dam: **RAYLEIGH L KARA M88 (P)**  
RILO PARK UNSHAKEABLE (AI) (ET) (P)  
RAYLEIGH L UNITY G41 (P)  
RAYLEIGH L TIFFANY D007 (P)

| May 2021 Hereford BREEDPLAN |     |             |      |             |      |             |     |             |      |      |      |      |
|-----------------------------|-----|-------------|------|-------------|------|-------------|-----|-------------|------|------|------|------|
| BW                          | 200 | 400         | 600  | MCW         | Milk | SS          | Cwt | EMA         | Rib  | RUMP | RBY% | IMF% |
| +7.0                        | +47 | +75         | +106 | +98         | +22  | +3.7        | +61 | +1.0        | -0.2 | -0.3 | +0.3 | +0.2 |
| 69%                         | 64% | 63%         | 63%  | 55%         | 50%  | 74%         | 53% | 44%         | 49%  | 54%  | 46%  | 50%  |
| Selection Index Values:     |     | SSR: +\$143 |      | NSR: +\$115 |      | SBM: +\$143 |     | NBT: +\$108 |      |      |      |      |

Traits Observed: CE,BWT,200WT,400WT(x2),SS,FAT,EMA,IMF,Genomics

Notes: A large framed sire that is very square, with a long body and well set eyes. This bull has a nice clean coat, polled head and sheath. Top 5% 200, 400 & 600 DW. Top 20% Milk. Birth Weight 45kg. EP 100/100.

Purchaser: .....

Price \$:.....

## Lot 11 RAYLEIGH QUAVER Q074 (P)

Tattoo: Q074

Rego No: AHCQ074

Born: 26/05/2019

BOWMONT STORM C093 (H)

YALGOO BREAK OUT G075 (AI) (P)

YALGOO BLUSH A036 (P)

Sire: YALGOO KNICKERBOCKER L205 (PP)

STUDBROOK D'ARTAGNION V086 (AI) (ET) (S)

YALGOO VANESSA E054 (ET) (P)

YALGOO VANESSA T104 (P)

KARINA CHERRY Z8 (PP)

TYCOLAH GOLD RUSH (S)

TYCOLAH COUNTESS Z04 (P)

Dam: RAYLEIGH O GOLDIE G23 (AI) (P)

DEBARRY TRIBULUS 2 (P)

RAYLEIGH O TIFFANY C80 (P)

TOOLANGATTA U101 THERESA W408 (AI) (P)

### May 2021 Hereford BREEDPLAN

| BW                      | 200 | 400 | 600 | MCW         | Milk        | SS          | Cwt         | EMA  | Rib  | RUMP | RBY% | IMF% |
|-------------------------|-----|-----|-----|-------------|-------------|-------------|-------------|------|------|------|------|------|
| +6.1                    | +39 | +62 | +98 | +96         | +13         | +2.3        | +63         | +3.5 | -0.7 | -1.0 | +1.5 | +0.2 |
| 71%                     | 65% | 65% | 65% | 58%         | 54%         | 75%         | 57%         | 48%  | 54%  | 57%  | 50%  | 54%  |
| Selection Index Values: |     |     |     | SSR: +\$141 | NSR: +\$121 | SBM: +\$143 | NBT: +\$106 |      |      |      |      |      |

Traits Observed: CE,BWT,200WT,400WT(x2),SS,FAT,EMA,IMF,Genomics

Notes: A very soft, dark Yalgoo Knickerbocker L205 son with great carcase and fill along the top. This bull has a good polled head with an excellent eye setting and tidy sheath. Top 10% 600 DW. Top 20% 200 DW. Birth Weight 46kg. EP 100/100.

Purchaser: .....

Price \$:.....

## Lot 12 RAYLEIGH QUAIL Q067 (PP)

Tattoo: Q067

Rego No: AHCQ067

Born: 18/05/2019

BOWMONT STORM C093 (H)

YALGOO BREAK OUT G075 (AI) (P)

YALGOO BLUSH A036 (P)

Sire: YALGOO KNICKERBOCKER L205 (PP)

STUDBROOK D'ARTAGNION V086 (AI) (ET) (S)

YALGOO VANESSA E054 (ET) (P)

YALGOO VANESSA T104 (P)

CANNAWIGRA COMMANDER Z51 (S)

WHIM PARK DESTROYER D035 (AI) (S)

NOROLLE V1 NIKKI Z78 (AI) (P)

Dam: RAYLEIGH L DESIRE K64 (P)

DEBARRY TRIBULUS 2 (P)

RAYLEIGH L TIFFANY F3 (P)

RAYLEIGH L UABBA Y4 (P)

### May 2021 Hereford BREEDPLAN

| BW                      | 200 | 400 | 600 | MCW         | Milk        | SS          | Cwt         | EMA  | Rib  | RUMP | RBY% | IMF% |
|-------------------------|-----|-----|-----|-------------|-------------|-------------|-------------|------|------|------|------|------|
| +5.0                    | +35 | +62 | +95 | +80         | +19         | +3.0        | +64         | +4.6 | +0.0 | +0.0 | +1.4 | +0.2 |
| 71%                     | 65% | 65% | 65% | 58%         | 52%         | 74%         | 56%         | 47%  | 53%  | 57%  | 49%  | 53%  |
| Selection Index Values: |     |     |     | SSR: +\$154 | NSR: +\$134 | SBM: +\$159 | NBT: +\$115 |      |      |      |      |      |

Traits Observed: CE,BWT,200WT,400WT(x2),SS,FAT,EMA,IMF,Genomics

Notes: A very correct Knickerbocker son out of one of our great old cows. A natural fleshing bull with plenty of fill along the top line, depth in the flank and side. Q067 has great neck extension and a clean polled head. Top 20% 600 DW & EMA. Birth Weight 42kg. EP 60/100.

Purchaser: .....

Price \$:.....

## Lot 13 RAYLEIGH QUARTERMASTER Q049 (P)

Tattoo: Q049

Rego No: AHCQ049

Born: 06/05/2019

ALLEDALE WATERHOUSE D1 (PP)

DAYS CALIBRE G74 (PP)

ALLEDALE DAWN C62 (AI) (P)

Sire: **BOWEN CALIBRE K207 (AI) (ET) (PP)**

MAUNGAHINA KINGDOM BAY 070073 (IMP NZL) (P)

BOWEN HILDA F8 (AI) (P)

BOWEN HILDA A101 (AI) (P)

KIDMAN THE DON Y220 (P)

BRAYBOOK FEDERER F448 (P)

WIRANYA PETAL X35 (P)

Dam: **RAYLEIGH S FRED A J5 (AI) (P)**

DEBARRY TRIBULUS 2 (P)

RAYLEIGH S TIFFANY E64 (P)

RAYLEIGH S CAROL B4 (P)

May 2021 Hereford BREEDPLAN

| BW                      | 200 | 400 | 600         | MCW  | Milk        | SS   | Cwt         | EMA  | Rib        | RUMP | RBY% | IMF% |
|-------------------------|-----|-----|-------------|------|-------------|------|-------------|------|------------|------|------|------|
| +8.8                    | +43 | +67 | +100        | +100 | +19         | +2.9 | +57         | +5.6 | -0.1       | -0.5 | +1.5 | +1.1 |
| 72%                     | 68% | 67% | 68%         | 61%  | 57%         | 76%  | 59%         | 50%  | 55%        | 59%  | 52%  | 56%  |
| Selection Index Values: |     |     | SSR: +\$130 |      | NSR: +\$107 |      | SBM: +\$128 |      | NBT: +\$99 |      |      |      |

Traits Observed: CE,BWT,200WT,400WT(x2),SS,FAT,EMA,IMF,Genomics

Notes: An extremely powerful sire with great head and eye. This bull has loads of thickness and width between the hind legs. Great eye pigment and soft skin. Top 5% 200 DW. Top 10% 600 DW & EMA. Top 20% 400 DW & IMF. Birth Weight 46kg. EP 100/100.

Purchaser: .....

Price \$:.....

## Lot 14 RAYLEIGH QUIP Q009 (P)

Tattoo: Q009

Rego No: AHCQ009

Born: 01/04/2019

BOWMONT STORM C093 (H)

YALGOO BREAK OUT G075 (AI) (P)

YALGOO BLUSH A036 (P)

Sire: **YALGOO KNICKERBOCKER L205 (PP)**

STUDBROOK D'ARTAGNION V086 (AI) (ET) (S)

YALGOO VANESSA E054 (ET) (P)

YALGOO VANESSA T104 (P)

ALLEDALE ANZAC E114 (PP)

INJEMIRA ANZAC H003 (P)

INJEMIRA HAPPY DAY C097 (P)

Dam: **RAYLEIGH I ANASTASIA L80 (P)**

WHIM PARK DESTROYER D035 (AI) (S)

RAYLEIGH I DESIRE H92 (P)

RAYLEIGH I POSIE E19 (P)

May 2021 Hereford BREEDPLAN

| BW                      | 200 | 400 | 600         | MCW | Milk        | SS   | Cwt         | EMA  | Rib         | RUMP | RBY% | IMF% |
|-------------------------|-----|-----|-------------|-----|-------------|------|-------------|------|-------------|------|------|------|
| +5.5                    | +37 | +68 | +104        | +98 | +12         | +2.8 | +67         | +3.9 | -0.4        | -0.6 | +1.6 | +0.3 |
| 70%                     | 64% | 64% | 65%         | 57% | 50%         | 74%  | 55%         | 46%  | 52%         | 56%  | 48%  | 52%  |
| Selection Index Values: |     |     | SSR: +\$156 |     | NSR: +\$136 |      | SBM: +\$150 |      | NBT: +\$107 |      |      |      |

Traits Observed: CE,BWT,200WT,400WT(x2),SS,FAT,EMA,IMF,Genomics

Notes: Another sire with great eye pigment, loads of strength and depth. This bull is very deep in the twist and lower flank. Top 5% 600 DW. Top 20% 400 DW. Birth Weight 39kg. EP 100/100.

Purchaser: .....

Price \$:.....

## Lot 15 RAYLEIGH QUINALOW Q064 (P)

Tattoo: Q064

Rego No: AHCQ064

Born: 17/05/2019

ALLEDALE WATERHOUSE D1 (PP)

DAYS CALIBRE G74 (PP)

ALLEDALE DAWN C62 (AI) (P)

Sire: **BOWEN CALIBRE K207 (AI) (ET) (PP)**

MAUNGAHINA KINGDOM BAY 070073 (IMP NZL) (P)

BOWEN HILDA F8 (AI) (P)

BOWEN HILDA A101 (AI) (P)

BOWEN VINCENT V1 (S)

DEBARRY TRIBULUS 2 (P)

DEBARRY TABITHA V48 (ET) (P)

Dam: **RAYLEIGH J TIFFANY D73 (P)**

COLUMBIAN SURVIVOR W45 (P)

RAYLEIGH J SHAMROCK Z18 (P)

RAYLEIGH FELICITY 26 N56 (P)

### May 2021 Hereford BREEDPLAN

| BW                      | 200 | 400 | 600 | MCW         | Milk        | SS          | Cwt        | EMA  | Rib  | RUMP | RBY% | IMF% |
|-------------------------|-----|-----|-----|-------------|-------------|-------------|------------|------|------|------|------|------|
| +8.5                    | +41 | +63 | +91 | +93         | +10         | +2.8        | +52        | +4.3 | +0.6 | +0.9 | +0.5 | +0.7 |
| 72%                     | 68% | 68% | 67% | 59%         | 55%         | 76%         | 57%        | 51%  | 54%  | 59%  | 52%  | 53%  |
| Selection Index Values: |     |     |     | SSR: +\$121 | NSR: +\$105 | SBM: +\$112 | NBT: +\$79 |      |      |      |      |      |

Traits Observed: CE,BWT,200WT,400WT(x2),SS,FAT,EMA,IMF

Notes: Out of our oldest cow that has always bred well. A neat and tidy bull with well set eyes, length of hind quarter and a deep flank. Q064 was unwell and is just starting to hit his straps again. Top 10% 200 DW. Top 20% 600 DW. Birth Weight 51kg. EP 100/100.

Purchaser: .....

Price \$:.....

## Lot 16 RAYLEIGH QUARTERBACK Q069 (P)

Tattoo: Q069

Rego No: AHCQ069

Born: 19/05/2019

ALLEDALE YACKA (AI) (P)

ALLEDALE ANZAC E114 (PP)

ALLEDALE DAWN B22 (AI) (ET) (P)

Sire: **INJEMIRA ANZAC L170 (AI) (ET) (PP)**

KAIRURU ABERDEEN 03 0047 (IMP NZL) (P)

INJEMIRA HAPPY DAY D053 (AI) (ET) (P)

INJEMIRA HAPPY DAY Y012 (H)

SOUTH BUKALONG WALLACE 2 (P)

YAVENVALE BENCHMARK B278 (P)

YAVENVALE MISS MINERVA W051 (AI) (H)

Dam: **RAYLEIGH S BELLA G108 (P)**

ALLEDALE POSEIDON Z110 (P)

RAYLEIGH S POSIE C38 (P)

RAYLEIGH S UABBA Y21 (P)

### May 2021 Hereford BREEDPLAN

| BW                      | 200 | 400 | 600  | MCW         | Milk        | SS          | Cwt         | EMA  | Rib  | RUMP | RBY% | IMF% |
|-------------------------|-----|-----|------|-------------|-------------|-------------|-------------|------|------|------|------|------|
| +8.8                    | +48 | +84 | +121 | +112        | +17         | +2.0        | +72         | +4.3 | +0.3 | +0.2 | +1.4 | +0.6 |
| 69%                     | 64% | 64% | 65%  | 57%         | 51%         | 74%         | 56%         | 47%  | 53%  | 56%  | 49%  | 53%  |
| Selection Index Values: |     |     |      | SSR: +\$181 | NSR: +\$157 | SBM: +\$189 | NBT: +\$139 |      |      |      |      |      |

Traits Observed: CE,BWT,200WT,400WT(x2),SS,FAT,EMA,IMF,Genomics

Notes: A larger framed sire with great length. Q069 carries himself well, particularly in the front end. Good hooded eye. Top 1% 200, 400 & 600 DW. Birth Weight 48kg. EP 100/100.

Purchaser: .....

Price \$:.....

## Lot 17 RAYLEIGH QUILL Q051 (P)

Tattoo: Q051

Rego No: AHCQ051

Born: 08/05/2019

ALLEDALE YACKA (AI) (P)  
ALLEDALE ANZAC E114 (PP)  
ALLEDALE DAWN B22 (AI) (ET) (P)

Sire: **INJEMIRA ANZAC L170 (AI) (ET) (PP)**  
KAIRURU ABERDEEN 03 0047 (IMP NZL) (P)  
INJEMIRA HAPPY DAY D053 (AI) (ET) (P)  
INJEMIRA HAPPY DAY Y012 (H)

ALLEDALE ANZAC E114 (PP)  
INJEMIRA ANZAC H003 (P)  
INJEMIRA HAPPY DAY C097 (P)

Dam: **RAYLEIGH I ANASTASIA L85 (P)**  
WHIM PARK DESTROYER D035 (AI) (S)  
RAYLEIGH L DESIRE J35 (P)  
RAYLEIGH I ALYSIA E68 (P)

| May 2021 Hereford BREEDPLAN |     |             |     |             |      |             |     |             |      |      |      |      |
|-----------------------------|-----|-------------|-----|-------------|------|-------------|-----|-------------|------|------|------|------|
| BW                          | 200 | 400         | 600 | MCW         | Milk | SS          | Cwt | EMA         | Rib  | RUMP | RBY% | IMF% |
| +4.8                        | +37 | +64         | +86 | +71         | +12  | +0.0        | +62 | +5.0        | +1.4 | +1.9 | +0.9 | +0.8 |
| 71%                         | 67% | 66%         | 68% | 61%         | 54%  | 76%         | 58% | 49%         | 55%  | 59%  | 51%  | 56%  |
| Selection Index Values:     |     | SSR: +\$137 |     | NSR: +\$129 |      | SBM: +\$140 |     | NBT: +\$101 |      |      |      |      |

Traits Observed: CE,BWT,200WT,400WT(x2),SS,FAT,EMA,IMF,Genomics

Notes: A well balanced, structurally correct sire. This is a moderate sire with extreme length, thickness and depth. Q051 carries depth right through to the twist. One of Anna's picks. Top 20% EMA, Rib & Rump Fats. Birth Weight 37kg. EP 100/100.

Purchaser: ..... Price \$:.....

## Lot 18 RAYLEIGH QUILPE Q056 (P)

Tattoo: Q056

Rego No: AHCQ056

Born: 13/05/2019

ALLEDALE YACKA (AI) (P)  
ALLEDALE ANZAC E114 (PP)  
ALLEDALE DAWN B22 (AI) (ET) (P)

Sire: **INJEMIRA ANZAC L170 (AI) (ET) (PP)**  
KAIRURU ABERDEEN 03 0047 (IMP NZL) (P)  
INJEMIRA HAPPY DAY D053 (AI) (ET) (P)  
INJEMIRA HAPPY DAY Y012 (H)

SOUTH BUKALONG WALLACE 2 (P)  
YAVENVALE BENCHMARK B278 (P)  
YAVENVALE MISS MINERVA W051 (AI) (H)

Dam: **RAYLEIGH L BELLA G90 (P)**  
DEBARRY TRIBULUS 2 (P)  
RAYLEIGH L TIFFANY E42 (P)  
RAYLEIGH L UABBA Z74 (P)

| May 2021 Hereford BREEDPLAN |     |             |     |             |      |             |     |             |      |      |      |      |
|-----------------------------|-----|-------------|-----|-------------|------|-------------|-----|-------------|------|------|------|------|
| BW                          | 200 | 400         | 600 | MCW         | Milk | SS          | Cwt | EMA         | Rib  | RUMP | RBY% | IMF% |
| +5.4                        | +33 | +54         | +78 | +56         | +19  | +1.9        | +49 | +4.6        | +2.4 | +3.4 | +0.1 | +1.3 |
| 70%                         | 66% | 65%         | 66% | 58%         | 54%  | 75%         | 57% | 48%         | 54%  | 57%  | 50%  | 54%  |
| Selection Index Values:     |     | SSR: +\$144 |     | NSR: +\$133 |      | SBM: +\$143 |     | NBT: +\$100 |      |      |      |      |

Traits Observed: CE,BWT,200WT,400WT(x2),SS,FAT,EMA,IMF,Genomics

Notes: An exceptionally thick, deep sided bull. Q056 is a beautifully muscled bull with loads of depth that carries all the way through. Top 5% Rib & Rump Fats. Top 20% EMA & IMF. Birth Weight 46kg. EP 100/100.

Purchaser: ..... Price \$:.....



## Lot 19 RAYLEIGH QUINNELL Q053 (TW) (S)

Tattoo: Q053

Rego No: AHCQ053

Born: 09/05/2019

ALLEDALE YACKA (AI) (P)  
ALLEDALE ANZAC E114 (PP)  
ALLEDALE DAWN B22 (AI) (ET) (P)

Sire: **INJEMIRA ANZAC L170 (AI) (ET) (PP)**  
KAIRURU ABERDEEN 03 0047 (IMP NZL) (P)  
INJEMIRA HAPPY DAY D053 (AI) (ET) (P)  
INJEMIRA HAPPY DAY Y012 (H)

REMITALL BOOMER 46B (IMP CAN) (P)  
RAYLEIGH HERCULES H24 (AI) (PP)  
RAYLEIGH M UABBA Y47 (TW) (P)

Dam: **RAYLEIGH O HELEN K66 (P)**  
DEBARRY TRIBULUS 2 (P)  
RAYLEIGH O TIFFANY C80 (P)  
TOOLANGATTA U101 THERESA W408 (AI) (P)

| May 2021 Hereford BREEDPLAN |     |             |     |             |      |             |     |             |      |      |      |      |
|-----------------------------|-----|-------------|-----|-------------|------|-------------|-----|-------------|------|------|------|------|
| BW                          | 200 | 400         | 600 | MCW         | Milk | SS          | Cwt | EMA         | Rib  | RUMP | RBY% | IMF% |
| +5.3                        | +37 | +61         | +83 | +75         | +16  | +1.1        | +57 | +5.1        | +0.4 | +0.4 | +1.3 | +0.2 |
| 68%                         | 66% | 64%         | 66% | 58%         | 52%  | 64%         | 56% | 47%         | 52%  | 56%  | 49%  | 53%  |
| Selection Index Values:     |     | SSR: +\$127 |     | NSR: +\$115 |      | SBM: +\$136 |     | NBT: +\$104 |      |      |      |      |

Traits Observed: BWT,200WT,400WT(x2),SS,FAT,EMA,IMF,Genomics

Notes: A well structured sire with terrific thickness that carries right through. This bull finishes well over the plates and is nice and thick along the top line. Top 10% EMA. Birth Weight 37kg. EP 100/100. Scurred.

Purchaser: ..... Price \$:.....

## Lot 20 RAYLEIGH QUILLAN Q043 (S)

Tattoo: Q043

Rego No: AHCQ043

Born: 25/04/2019

ALLEDALE WATERHOUSE D1 (PP)  
DAYS CALIBRE G74 (PP)  
ALLEDALE DAWN C62 (AI) (P)

Sire: **BOWEN CALIBRE K207 (AI) (ET) (PP)**  
MAUNGAHINA KINGDOM BAY 070073 (IMP NZL) (P)  
BOWEN HILDA F8 (AI) (P)  
BOWEN HILDA A101 (AI) (P)

CANNAWIGRA COMMANDER Z51 (S)  
WHIM PARK DESTROYER D035 (AI) (S)  
NOROLLE V1 NIKKI Z78 (AI) (P)

Dam: **RAYLEIGH S DESIRE H38 (P)**  
DEBARRY TRIBULUS 2 (P)  
RAYLEIGH S TIFFANY D54 (P)  
RAYLEIGH ELLIE 18 R16 (P)

| May 2021 Hereford BREEDPLAN |     |             |     |            |      |             |     |            |      |      |      |      |
|-----------------------------|-----|-------------|-----|------------|------|-------------|-----|------------|------|------|------|------|
| BW                          | 200 | 400         | 600 | MCW        | Milk | SS          | Cwt | EMA        | Rib  | RUMP | RBY% | IMF% |
| +5.7                        | +31 | +47         | +76 | +77        | +13  | +3.2        | +45 | +5.6       | +0.6 | +0.8 | +0.9 | +0.7 |
| 72%                         | 68% | 67%         | 68% | 60%        | 56%  | 76%         | 58% | 49%        | 54%  | 58%  | 51%  | 55%  |
| Selection Index Values:     |     | SSR: +\$111 |     | NSR: +\$98 |      | SBM: +\$110 |     | NBT: +\$83 |      |      |      |      |

Traits Observed: CE,BWT,200WT,400WT(x2),SS,FAT,EMA,IMF,Genomics

Notes: A more moderate framed bull with good balance and head carriage. Great dark coat. Top 10% EMA. Birth Weight 41kg, EP 98/100. Scurred.

Purchaser: ..... Price \$:.....

## Lot 21 RAYLEIGH QUARRY Q044 (P)

Tattoo: Q044

Rego No: AHCQ044

Born: 26/04/2019

SOUTH BUKALONG WALLACE 2 (P)

YAVENVALE BENCHMARK B278 (P)

YAVENVALE MISS MINERVA W051 (AI) (H)

Sire: RAYLEIGH LANDSLIDE L118 (TW) (P)

RAYLEIGH ALBERTA A4 (AI) (P)

RAYLEIGH ALYSIA E103 (TW) (P)

RAYLEIGH L SHAMROCK A26 (P)

DAYS CALIBRE G74 (PP)

DAYS ROBIN HOOD J183 (PP)

ALLENDAL FANCY U5 (AI) (P)

Dam: RAYLEIGH I RUBY M085 (P)

RAYLEIGH HERCULES H24 (AI) (PP)

RAYLEIGH I HELEN K29 (P)

RAYLEIGH I BELLA G93 (P)

### May 2021 Hereford BREEDPLAN

| BW   | 200 | 400 | 600 | MCW | Milk | SS   | Cwt | EMA  | Rib  | RUMP | RBY% | IMF% |
|--|-----|-----|-----|-----|------|------|-----|------|------|------|------|------|
| +0.7   | +21 | +33 | +42 | +31 | +12  | +2.3 | +28 | +2.8 | +1.4 | +2.1 | -0.4 | +0.8 |
| 68%  | 64% | 63% | 63% | 56% | 49%  | 74%  | 54% | 45%  | 51%  | 55%  | 47%  | 51%  |
| Selection Index Values: SSR: +\$109 NSR: +\$107 SBM: +\$126 NBT: +\$92 |     |     |     |     |      |      |     |      |      |      |      |      |

Traits Observed: CE,BWT,200WT,400WT(x2),SS,FAT,EMA,IMF,Genomics

Notes: A sire with a lot of length and stretch that is also smooth through the shoulders. Good over the plates and good in the hindquarter. Top 10% Birth Weight. 20% Rib & Rump Fats. Birth Weight 35kg. EP 100/100. Possible Heifer bull.

Purchaser: .....

Price \$:.....

## Lot 22 RAYLEIGH QUINTUS Q042 (P)

Tattoo: Q042

Rego No: AHCQ042

Born: 25/04/2019

SOUTH BUKALONG WALLACE 2 (P)

YAVENVALE BENCHMARK B278 (P)

YAVENVALE MISS MINERVA W051 (AI) (H)

Sire: RAYLEIGH LANDSLIDE L118 (TW) (P)

RAYLEIGH ALBERTA A4 (AI) (P)

RAYLEIGH ALYSIA E103 (TW) (P)

RAYLEIGH L SHAMROCK A26 (P)

WHIM PARK DESTROYER D035 (AI) (S)

RAYLEIGH KLINCKER K77 (P)

RAYLEIGH M GOLDIE G19 (AI) (P)

Dam: RAYLEIGH S KAMILA N002 (H#)

BRAYBOOK FEDERER F448 (P)

RAYLEIGH S FREDIA K25 (AI) (P)

RAYLEIGH S LARA C12 (AI) (P)

### May 2021 Hereford BREEDPLAN

| BW  | 200 | 400 | 600 | MCW | Milk | SS   | Cwt | EMA  | Rib  | RUMP | RBY% | IMF% |
|---|-----|-----|-----|-----|------|------|-----|------|------|------|------|------|
| +2.9  | +30 | +41 | +58 | +43 | +17  | +2.1 | +37 | +2.2 | +0.2 | +0.2 | +0.8 | -0.2 |
| 67%   | 63% | 63% | 62% | 54% | 47%  | 74%  | 52% | 44%  | 49%  | 53%  | 46%  | 49%  |
| Selection Index Values: SSR: +\$101 NSR: +\$90 SBM: +\$108 NBT: +\$77 |     |     |     |     |      |      |     |      |      |      |      |      |

Traits Observed: CE,BWT,200WT,400WT(x2),SS,FAT,EMA,IMF,Genomics

Notes: A friendly natured sire with a more moderate frame, this bull displays a very nice muscle pattern and good structure. Very easy doing. Birth Weight 39kg, EP 100/80. Possible Heifer bull.

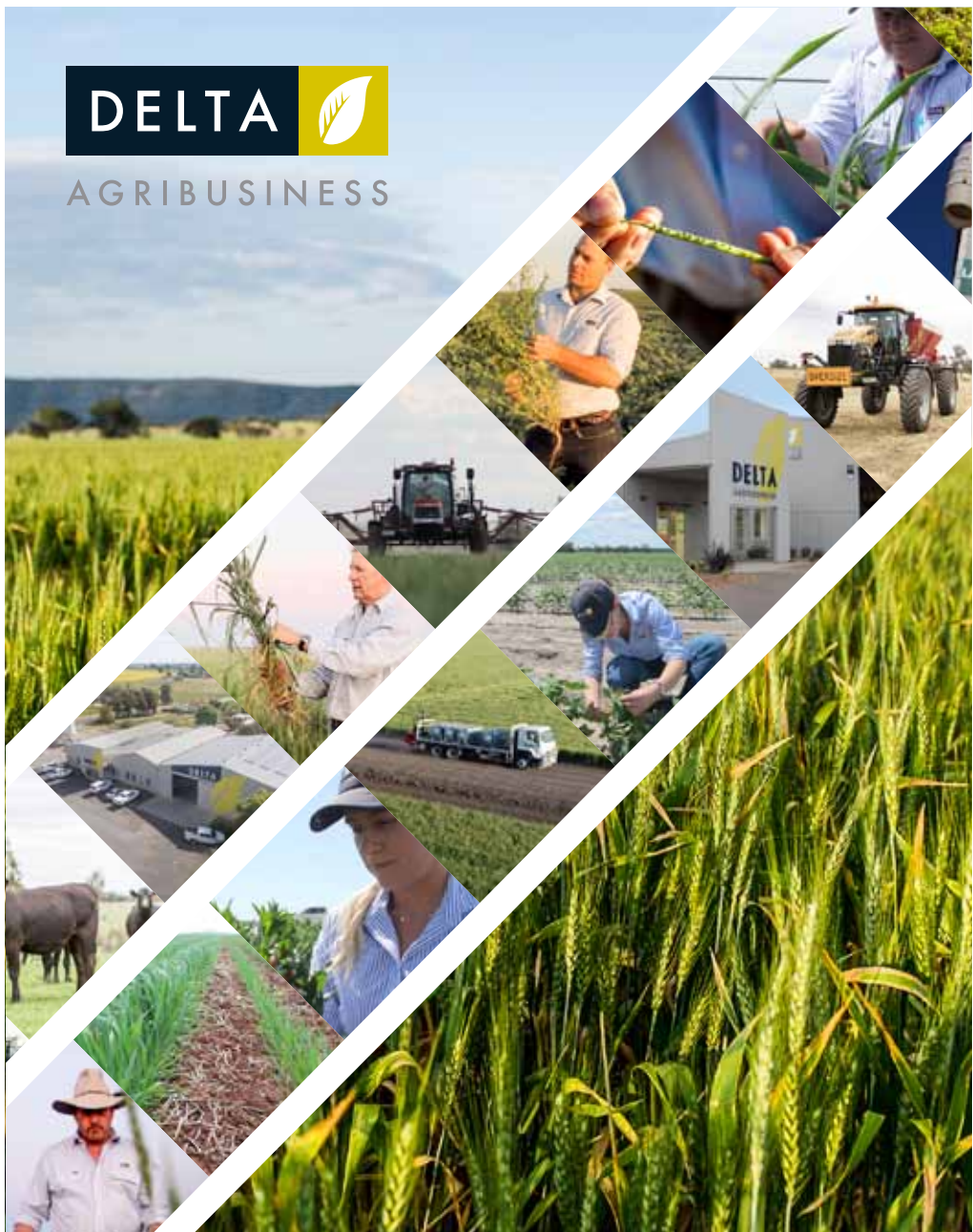
Purchaser: .....

Price \$:.....

# DELTA



## AGRIBUSINESS



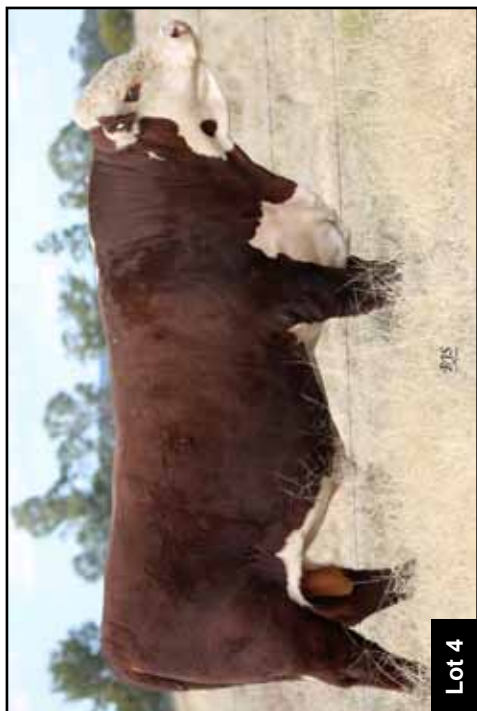
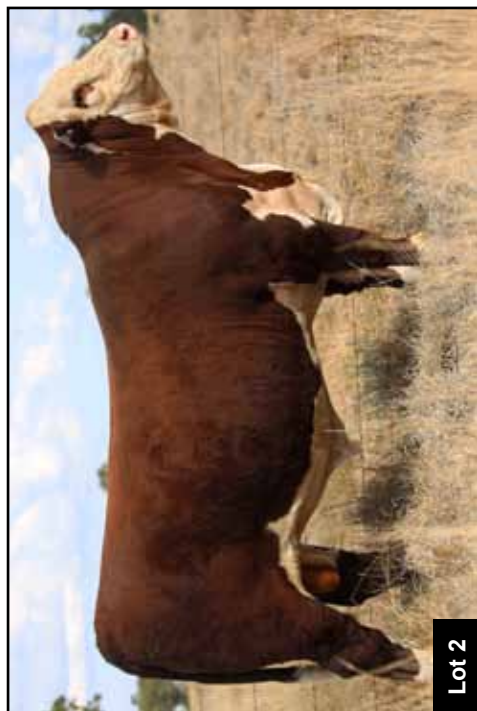
**BURREN JUNCTION**  
**02 6796 1290**

**NARRABRI**  
**02 6792 6488**

**WEE WAA**  
**02 6795 1287**



[www.deltaag.com.au](http://www.deltaag.com.au)

































## Lot 23 RAYLEIGH QANTAS Q019 (PP)

Tattoo: Q019

Rego No: AHCQ019

Born: 10/04/2019

SOUTH BUKALONG WALLACE 2 (P)

YAVENVALE BENCHMARK B278 (P)

YAVENVALE MISS MINERVA W051 (AI) (H)

Sire: RAYLEIGH LANDSLIDE L118 (TW) (P)

RAYLEIGH ALBERTA A4 (AI) (P)

RAYLEIGH ALYSIA E103 (TW) (P)

RAYLEIGH L SHAMROCK A26 (P)

MOUNTAIN VALLEY GAMBLER G14 (P)

MOUNTAIN VALLEY KARABAR K203 (AI) (ET) (PP)

MOUNTAIN VALLEY SHAMROCK C12 (AI) (P)

Dam: RAYLEIGH S KARA M60 (P)

WHIM PARK DESTROYER D035 (AI) (S)

RAYLEIGH S DESIRE H56 (P)

RAYLEIGH AMOROUS 27 V12 (P)

| May 2021 Hereford BREEDPLAN |     |             |     |            |      |             |     |            |      |      |      |      |
|-----------------------------|-----|-------------|-----|------------|------|-------------|-----|------------|------|------|------|------|
| BW                          | 200 | 400         | 600 | MCW        | Milk | SS          | Cwt | EMA        | Rib  | RUMP | RBY% | IMF% |
| +0.6                        | +26 | +42         | +52 | +36        | +16  | +1.8        | +40 | +1.6       | +1.2 | +1.9 | -0.5 | +0.3 |
| 69%                         | 65% | 64%         | 63% | 55%        | 50%  | 75%         | 53% | 45%        | 50%  | 54%  | 47%  | 50%  |
| Selection Index Values:     |     | SSR: +\$106 |     | NSR: +\$98 |      | SBM: +\$114 |     | NBT: +\$85 |      |      |      |      |

Traits Observed: CE,BWT,200WT,400WT(x2),SS,FAT,EMA,IMF,Genomics

Notes: A moderate framed sire who displays a nice muscle pattern and good length of hindquarter. Top 5% Birth Weight. 20% Rump fat. Birth Weight 35kg. EP 100/100. Possible Heifer bull.

Purchaser: .....

Price \$:.....

## Lot 24 RAYLEIGH QUARTERMAINE Q100 (P)

Tattoo: Q100

Rego No: AHCQ100

Born: 22/07/2019

BOWMONT STORM C093 (H)

YALGOO BREAK OUT G075 (AI) (P)

YALGOO BLUSH A036 (P)

Sire: YALGOO KNICKERBOCKER L205 (PP)

STUDBROOK D'ARTAGNION V086 (AI) (ET) (S)

YALGOO VANESSA E054 (ET) (P)

YALGOO VANESSA T104 (P)

KAIRURU ABERDEEN 03 0047 (IMP NZL) (P)

KAIRURU FLINT 080058 (IMP NZL) (PP)

KAIRURU LEONORA 01 02 (P)

Dam: RAYLEIGH L SERENITY J19 (AI) (P)

ALLEDALE POSEIDON Z110 (P)

RAYLEIGH L POSIE C41 (P)

RAYLEIGH SUZIE 5 V31 (P)

| May 2021 Hereford BREEDPLAN |     |             |     |             |      |             |     |            |      |      |      |      |
|-----------------------------|-----|-------------|-----|-------------|------|-------------|-----|------------|------|------|------|------|
| BW                          | 200 | 400         | 600 | MCW         | Milk | SS          | Cwt | EMA        | Rib  | RUMP | RBY% | IMF% |
| +6.5                        | +33 | +62         | +93 | +97         | +9   | +2.5        | +50 | +3.1       | -0.3 | -0.2 | +1.1 | -0.3 |
| 70%                         | 65% | 64%         | 65% | 58%         | 53%  | 70%         | 56% | 47%        | 53%  | 57%  | 49%  | 54%  |
| Selection Index Values:     |     | SSR: +\$134 |     | NSR: +\$115 |      | SBM: +\$132 |     | NBT: +\$96 |      |      |      |      |

Traits Observed: CE,BWT,200WT,400WT(x2),SS,FAT,EMA,IMF,Genomics

Notes: A younger sire that displays plenty of growth for age. Q100 is long bodied and correct with a very soft skin and well set eyes. Top 20% 600 DW. Birth Weight 41kg. EP 100/100.

Purchaser: .....

Price \$:.....

## Lot 25 RAYLEIGH QUEANBEYAN Q098 (P)

Tattoo: Q098

Rego No: AHCQ098

Born: 12/07/2019

ALLEDALE WATERHOUSE D1 (PP)

DAYS CALIBRE G74 (PP)

ALLEDALE DAWN C62 (AI) (P)

Sire: BOWEN CALIBRE K207 (AI) (ET) (PP)

MAUNGAHINA KINGDOM BAY 070073 (IMP NZL) (P)

BOWEN HILDA F8 (AI) (P)

BOWEN HILDA A101 (AI) (P)

SOUTH BUKALONG WALLACE 2 (P)

YAVENVALE BENCHMARK B278 (P)

YAVENVALE MISS MINERVA W051 (AI) (H)

Dam: RAYLEIGH L BELLA G112 (P)

DEBARRY TRIBULUS 2 (P)

RAYLEIGH L TIFFANY D26 (P)

RAYLEIGH L UABBA Z87 (P)

| May 2021 Hereford BREEDPLAN |     |             |     |             |      |             |     |             |      |      |      |      |
|-----------------------------|-----|-------------|-----|-------------|------|-------------|-----|-------------|------|------|------|------|
| BW                          | 200 | 400         | 600 | MCW         | Milk | SS          | Cwt | EMA         | Rib  | RUMP | RBY% | IMF% |
| +5.2                        | +35 | +60         | +87 | +81         | +12  | +2.3        | +56 | +3.9        | +0.6 | +0.5 | +0.8 | +0.9 |
| 71%                         | 67% | 66%         | 67% | 59%         | 55%  | 74%         | 57% | 49%         | 54%  | 58%  | 50%  | 54%  |
| Selection Index Values:     |     | SSR: +\$149 |     | NSR: +\$137 |      | SBM: +\$159 |     | NBT: +\$117 |      |      |      |      |

Traits Observed: CE,BWT,200WT,400WT(x2),SS,FAT,EMA,IMF,Genomics

Notes: A nicely put together sire with heaps of dimension, a very thick, deep sided bull with good hooded eyes. This bull will continue to develop. Birth Weight 44kg. EP 100/100.

Purchaser: .....

Price \$:.....

## Lot 26 RAYLEIGH QUILBERRY Q088 (P)

Tattoo: Q088

Rego No: AHCQ088

Born: 13/06/2019

ALLEDALE YACKA (AI) (P)

ALLEDALE ANZAC E114 (PP)

ALLEDALE DAWN B22 (AI) (ET) (P)

Sire: INJEMIRA ANZAC L170 (AI) (ET) (PP)

KAIRURU ABERDEEN 03 0047 (IMP NZL) (P)

INJEMIRA HAPPY DAY D053 (AI) (ET) (P)

INJEMIRA HAPPY DAY Y012 (H)

SOUTH BUKALONG WALLACE 2 (P)

YAVENVALE BENCHMARK B278 (P)

YAVENVALE MISS MINERVA W051 (AI) (H)

Dam: RAYLEIGH S BELLA J87 (P)

COLUMBIAN U153 KINGSLEY Z05 (P)

RAYLEIGH S KIRRILY G24 (AI) (P)

RAYLEIGH S TIFFANY D54 (P)

| May 2021 Hereford BREEDPLAN |     |             |     |             |      |             |     |             |      |      |      |      |
|-----------------------------|-----|-------------|-----|-------------|------|-------------|-----|-------------|------|------|------|------|
| BW                          | 200 | 400         | 600 | MCW         | Milk | SS          | Cwt | EMA         | Rib  | RUMP | RBY% | IMF% |
| +4.9                        | +38 | +58         | +81 | +66         | +14  | +2.9        | +51 | +2.8        | +1.3 | +1.9 | -0.1 | +0.7 |
| 70%                         | 66% | 66%         | 67% | 60%         | 53%  | 74%         | 58% | 48%         | 55%  | 58%  | 51%  | 55%  |
| Selection Index Values:     |     | SSR: +\$148 |     | NSR: +\$138 |      | SBM: +\$163 |     | NBT: +\$119 |      |      |      |      |

Traits Observed: CE,BWT,200WT,400WT(x2),SS,FAT,EMA,IMF,Genomics

Notes: A long bodied, easy doing bull with a clean sheath and polled head. Top 20% 200 DW, Rib & Rump Fats. Birth Weight 41kg. EP 100/100.

Purchaser: .....

Price \$:.....



## Lot 27 RAYLEIGH QUENCH Q107 (P)

Tattoo: Q107

Rego No: AHCQ107

Born: 17/08/2019

ALLEDALE YACKA (AI) (P)  
ALLEDALE ANZAC E114 (PP)  
ALLEDALE DAWN B22 (AI) (ET) (P)

Sire: **INJEMIRA ANZAC L170 (AI) (ET) (PP)**  
KAIRURU ABERDEEN 03 0047 (IMP NZL) (P)  
INJEMIRA HAPPY DAY D053 (AI) (ET) (P)  
INJEMIRA HAPPY DAY Y012 (H)

BOWEN TORNADO Z260 (AI) (ET) (PP)  
RILO PARK UNSHAKEABLE (AI) (ET) (P)  
BOWEN MATCHLESS L140 (AI) (P)

Dam: **RAYLEIGH L UNITY G41 (P)**  
DEBARRY TRIBULUS 2 (P)  
RAYLEIGH L TIFFANY D007 (P)  
RAYLEIGH L UABBA X80 (P)

| May 2021 Hereford BREEDPLAN |     |             |     |             |      |             |     |            |      |      |      |      |
|-----------------------------|-----|-------------|-----|-------------|------|-------------|-----|------------|------|------|------|------|
| BW                          | 200 | 400         | 600 | MCW         | Milk | SS          | Cwt | EMA        | Rib  | RUMP | RBY% | IMF% |
| +4.7                        | +33 | +56         | +81 | +64         | +21  | +1.3        | +52 | +4.0       | +2.0 | +2.8 | -0.4 | +1.1 |
| 70%                         | 66% | 65%         | 66% | 59%         | 55%  | 64%         | 57% | 47%        | 53%  | 56%  | 49%  | 54%  |
| Selection Index Values:     |     | SSR: +\$123 |     | NSR: +\$105 |      | SBM: +\$121 |     | NBT: +\$88 |      |      |      |      |

Traits Observed: CE,BWT,200WT,400WT(x2),SS,FAT,EMA,IMF,Genomics

Notes: Second youngest sire in the sale. This bull has terrific length of body, is easy doing and has natural fleshing, with a good strong top line. Another L170 son that carried his depth right through. Top 5% Rib & Rump fats. Top 20% Milk & IMF. Birth Weight 43kg. EP 100/100.

Purchaser: .....

Price \$:.....

## Lot 28 RAYLEIGH QUADRANT Q091 (S)

Tattoo: Q091

Rego No: AHCQ091

Born: 30/06/2019

ALLEDALE YACKA (AI) (P)  
ALLEDALE ANZAC E114 (PP)  
ALLEDALE DAWN B22 (AI) (ET) (P)

Sire: **INJEMIRA ANZAC L170 (AI) (ET) (PP)**  
KAIRURU ABERDEEN 03 0047 (IMP NZL) (P)  
INJEMIRA HAPPY DAY D053 (AI) (ET) (P)  
INJEMIRA HAPPY DAY Y012 (H)

CANNAWIGRA COMMANDER Z51 (S)  
WHIM PARK DESTROYER D035 (AI) (S)  
NOROLLE V1 NIKKI Z78 (AI) (P)

Dam: **RAYLEIGH L DESIRE K46 (P)**  
RAYLEIGH ALBERTA A4 (AI) (P)  
RAYLEIGH ALYSIA E103 (TW) (P)  
RAYLEIGH L SHAMROCK A26 (P)

| May 2021 Hereford BREEDPLAN |     |             |     |            |      |             |     |            |      |      |      |      |
|-----------------------------|-----|-------------|-----|------------|------|-------------|-----|------------|------|------|------|------|
| BW                          | 200 | 400         | 600 | MCW        | Milk | SS          | Cwt | EMA        | Rib  | RUMP | RBY% | IMF% |
| +7.2                        | +37 | +61         | +87 | +80        | +16  | +2.0        | +50 | +3.8       | +1.1 | +1.3 | -0.1 | +1.1 |
| 70%                         | 65% | 65%         | 65% | 58%        | 53%  | 73%         | 56% | 47%        | 52%  | 56%  | 49%  | 53%  |
| Selection Index Values:     |     | SSR: +\$119 |     | NSR: +\$99 |      | SBM: +\$116 |     | NBT: +\$86 |      |      |      |      |

Traits Observed: CE,BWT,200WT,400WT(x2),SS,FAT,EMA,IMF,Genomics

Notes: A structurally correct sire with nice length of neck and body, wrapped in a soft skin and hair. This bull shows fair depth of body and a good top line and will develop well out of the mob. Top 20% IMF. Birth Weight 51kg. EP 100/100. Scurred.

Purchaser: .....

Price \$:.....

# Dedicated to THE AGRICULTURAL INDUSTRY IN NORTH WEST NSW

With more than 155 years of experience looking after primary producers and secondary processors, we have the insights, expertise and the local knowledge to help you bring your plans to life – at every stage of the journey.

Talk to your NAB Agribusiness banker today or call:

**Samantha Hegarty**

0436 925 086

**James Pitman**

0427 005 269

**Alex Reed**

0429 569 267

**Dugald Locke**

0427 241 069



Helping your herd to  
perform at it's best...  
Our vets are accredited to  
**BULLCHECK (VBBSE)**  
and  
**PREGCHECK (NCPD tags)**

Proudly providing veterinary services to  
Rayleigh Poll Herefords

# HEIFER LOTS

## Lot 29 RAYLEIGH J CHANEL R37 (P)

Tattoo: R037

Rego No: AHCR037

Born: 21/04/2020

ALLENDAL WATERHOUSE D1 (PP)

DAYS CALIBRE G74 (PP)

ALLENDAL DAWN C62 (AI) (P)

Sire: BOWEN CALIBRE K207 (AI) (ET) (PP)

MAUNGAHINA KINGDOM BAY 070073 (IMP NZL) (P)

BOWEN HILDA F8 (AI) (P)

BOWEN HILDA A101 (AI) (P)

BOWEN VINCENT V1 (S)

DEBARRY TRIBULUS 2 (P)

DEBARRY TABITHA V48 (ET) (P)

Dam: RAYLEIGH J TIFFANY D73 (P)

COLUMBIAN SURVIVOR W45 (P)

RAYLEIGH J SHAMROCK Z18 (P)

RAYLEIGH FELICITY 26 N56 (P)

### May 2021 Hereford BREEDPLAN

| BW                      | 200 | 400 | 600 | MCW         | Milk        | SS          | Cwt        | EMA  | Rib  | RUMP | RBY% | IMF% |
|-------------------------|-----|-----|-----|-------------|-------------|-------------|------------|------|------|------|------|------|
| +8.0                    | +41 | +62 | +90 | +88         | +10         | +2.6        | +53        | +4.5 | +1.0 | +1.6 | +0.2 | +0.9 |
| 72%                     | 67% | 64% | 64% | 56%         | 55%         | 61%         | 54%        | 46%  | 51%  | 55%  | 49%  | 52%  |
| Selection Index Values: |     |     |     | SSR: +\$128 | NSR: +\$114 | SBM: +\$120 | NBT: +\$84 |      |      |      |      |      |

Traits Observed: CE,BWT,200WT

Notes: A beautiful, larger framed, roomy and powerful heifer that consistently weighs in the top of the drop. Out of one of our great old cows, D73, who is also the mother of Lot 15. Birth Weight 43kg. EP 100/100.

Purchaser: .....

Price \$:.....

## Lot 30 RAYLEIGH O CHANEL R55 (TW) (P)

Tattoo: R055

Rego No: AHCR055

Born: 05/05/2020

ALLENDAL WATERHOUSE D1 (PP)

DAYS CALIBRE G74 (PP)

ALLENDAL DAWN C62 (AI) (P)

Sire: BOWEN CALIBRE K207 (AI) (ET) (PP)

MAUNGAHINA KINGDOM BAY 070073 (IMP NZL) (P)

BOWEN HILDA F8 (AI) (P)

BOWEN HILDA A101 (AI) (P)

KARINA CHERRY Z8 (PP)

TYCOLAH GOLD RUSH (S)

TYCOLAH COUNTESS Z04 (P)

Dam: RAYLEIGH O GOLDIE G23 (AI) (P)

DEBARRY TRIBULUS 2 (P)

RAYLEIGH O TIFFANY C80 (P)

TOOLANGATTA U101 THERESA W408 (AI) (P)

### May 2021 Hereford BREEDPLAN

| BW                      | 200 | 400 | 600 | MCW         | Milk        | SS          | Cwt        | EMA  | Rib  | RUMP | RBY% | IMF% |
|-------------------------|-----|-----|-----|-------------|-------------|-------------|------------|------|------|------|------|------|
| +8.3                    | +41 | +62 | +93 | +97         | +11         | +2.9        | +54        | +4.4 | -0.2 | -0.5 | +1.2 | +0.8 |
| 71%                     | 66% | 62% | 63% | 56%         | 54%         | 61%         | 54%        | 47%  | 51%  | 55%  | 49%  | 52%  |
| Selection Index Values: |     |     |     | SSR: +\$122 | NSR: +\$104 | SBM: +\$116 | NBT: +\$86 |      |      |      |      |      |

Traits Observed: BWT,200WT

Notes: A feminine, long and stretchy Bowen Calibre K207 heifer with plenty of capacity to go with it. A twin that will grow into a nice, soft cow. Maternal half brother is Lot 11 in the sale. Birth Weight 38kg. EP 100/100.

Purchaser: .....

Price \$:.....

## Lot 31 RAYLEIGH Y CHANEL R60 (P)

Tattoo: R060

Rego No: AHCR060

Born: 07/05/2020

ALLEDALE WATERHOUSE D1 (PP)

DAYS CALIBRE G74 (PP)

ALLEDALE DAWN C62 (AI) (P)

Sire: **BOWEN CALIBRE K207 (AI) (ET) (PP)**

MAUNGAHINA KINGDOM BAY 070073 (IMP NZL) (P)

BOWEN HILDA F8 (AI) (P)

BOWEN HILDA A101 (AI) (P)

ALLEDALE YACKA (AI) (P)

ALLEDALE ANZAC E114 (PP)

ALLEDALE DAWN B22 (AI) (ET) (P)

Dam: **COURALLIE FATTIE M643 (AI) (P)**

KIDMAN TURBO Z11 (AI) (P)

COURALLIE Z11 FATTIE C075 (TW) (P)

COURALLIE P358 FATTIE Z042 (AI) (H)

| May 2021 Hereford BREEDPLAN |     |     |             |      |             |      |             |      |            |      |      |      |
|-----------------------------|-----|-----|-------------|------|-------------|------|-------------|------|------------|------|------|------|
| BW                          | 200 | 400 | 600         | MCW  | Milk        | SS   | Cwt         | EMA  | Rib        | RUMP | RBY% | IMF% |
| +8.7                        | +44 | +73 | +106        | +108 | +10         | +3.4 | +62         | +5.2 | +0.6       | +0.7 | +0.6 | +1.4 |
| 72%                         | 67% | 62% | 62%         | 56%  | 52%         | 60%  | 54%         | 47%  | 52%        | 55%  | 49%  | 53%  |
| Selection Index Values:     |     |     | SSR: +\$139 |      | NSR: +\$121 |      | SBM: +\$132 |      | NBT: +\$99 |      |      |      |

Traits Observed: BWT,200WT

Notes: Another large framed Bowen Calibre K207 daughter with a nice soft skin and excellent cosmetics. Out of Courallie Fatty M643, who we purchased as a heifer at the Courallie dispersal sale. This heifer should grow into an impressive cow. Birth Weight 44kg, EP 100/100.

Purchaser: .....

Price \$:.....

## Lot 32 RAYLEIGH L LACEY R85 (P)

Tattoo: R085

Rego No: AHCR085

Born: 30/05/2020

BOWMONT STORM C093 (H)

YALGOO BREAK OUT G075 (AI) (P)

YALGOO BLUSH A036 (P)

Sire: **YALGOO KNICKERBOCKER L205 (PP)**

STUDBROOK D'ARTAGNION V086 (AI) (ET) (S)

YALGOO VANESSA E054 (ET) (P)

YALGOO VANESSA T104 (P)

KAIRURU ABERDEEN 03 0047 (IMP NZL) (P)

KAIRURU FLINT 080058 (IMP NZL) (PP)

KAIRURU LEONORA 01 02 (P)

Dam: **RAYLEIGH L SERENITY J19 (AI) (P)**

ALLEDALE POSEIDON Z110 (P)

RAYLEIGH L POSIE C41 (P)

RAYLEIGH SUZIE 5 V31 (P)

| May 2021 Hereford BREEDPLAN |     |     |             |     |             |      |             |      |             |      |      |      |
|-----------------------------|-----|-----|-------------|-----|-------------|------|-------------|------|-------------|------|------|------|
| BW                          | 200 | 400 | 600         | MCW | Milk        | SS   | Cwt         | EMA  | Rib         | RUMP | RBY% | IMF% |
| +4.9                        | +32 | +58 | +86         | +82 | +11         | +2.3 | +53         | +3.9 | +0.6        | +1.2 | +0.9 | +0.3 |
| 69%                         | 63% | 59% | 60%         | 53% | 50%         | 56%  | 51%         | 43%  | 48%         | 52%  | 45%  | 49%  |
| Selection Index Values:     |     |     | SSR: +\$140 |     | NSR: +\$128 |      | SBM: +\$139 |      | NBT: +\$102 |      |      |      |

Traits Observed: BWT,200WT

Notes: A soft, easy fleshing heifer with plenty of growth and carcass. Birth Weight 35kg, EP 25/85.

Purchaser: .....

Price \$:.....

## Lot 33 RAYLEIGH S LACEY R108 (P)

Tattoo: R108

Rego No: AHCR108

Born: 07/08/2020

BOWMONT STORM C093 (H)

YALGOO BREAK OUT G075 (AI) (P)

YALGOO BLUSH A036 (P)

Sire: YALGOO KNICKERBOCKER L205 (PP)

STUDBROOK D'ARTAGNION V086 (AI) (ET) (S)

YALGOO VANESSA E054 (ET) (P)

YALGOO VANESSA T104 (P)

KIDMAN THE DON Y220 (P)

BRAYBOOK FEDERER F448 (P)

WIRANYA PETAL X35 (P)

Dam: RAYLEIGH S FRED A K25 (AI) (P)

HARVIE LADIES MAN 4L (IMP CAN) (PP)

RAYLEIGH S LARA C12 (AI) (P)

RAYLEIGH S UABBA Y49 (P)

| May 2021 Hereford BREEDPLAN |     |             |      |            |      |             |     |            |      |      |      |      |
|-----------------------------|-----|-------------|------|------------|------|-------------|-----|------------|------|------|------|------|
| BW                          | 200 | 400         | 600  | MCW        | Milk | SS          | Cwt | EMA        | Rib  | RUMP | RBY% | IMF% |
| +9.3                        | +46 | +72         | +112 | +105       | +18  | +2.9        | +66 | +5.1       | -0.9 | -1.5 | +2.3 | +0.0 |
| 67%                         | 60% | 58%         | 58%  | 52%        | 48%  | 55%         | 51% | 42%        | 48%  | 51%  | 45%  | 48%  |
| Selection Index Values:     |     | SSR: +\$128 |      | NSR: +\$99 |      | SBM: +\$105 |     | NBT: +\$73 |      |      |      |      |

Traits Observed: BWT

Notes: This heifer displays exceptional growth and weight for age. A very long heifer that carries herself well. The youngest heifer of the drop, we will be sorry to see her go. Birth Weight 53kg. EP 10/85.

Purchaser: ..... Price \$:.....

## Lot 34 RAYLEIGH S CHANEL R43 (TW) (P)

Tattoo: R043

Rego No: AHCR043

Born: 28/04/2020

ALLENDALE WATERHOUSE D1 (PP)

DAYS CALIBRE G74 (PP)

ALLENDALE DAWN C62 (AI) (P)

Sire: BOWEN CALIBRE K207 (AI) (ET) (PP)

MAUNGAHINA KINGDOM BAY 070073 (IMP NZL) (P)

BOWEN HILDA F8 (AI) (P)

BOWEN HILDA A101 (AI) (P)

MOUNTAIN VALLEY GAMBLER G14 (P)

MOUNTAIN VALLEY KARABAR K203 (AI) (ET) (PP)

MOUNTAIN VALLEY SHAMROCK C12 (AI) (P)

Dam: RAYLEIGH S KARA M60 (P)

WHIM PARK DESTROYER D035 (AI) (S)

RAYLEIGH S DESIRE H56 (P)

RAYLEIGH AMOROUS 27 V12 (P)

| May 2021 Hereford BREEDPLAN |     |             |     |             |      |             |     |            |      |      |      |      |
|-----------------------------|-----|-------------|-----|-------------|------|-------------|-----|------------|------|------|------|------|
| BW                          | 200 | 400         | 600 | MCW         | Milk | SS          | Cwt | EMA        | Rib  | RUMP | RBY% | IMF% |
| +7.2                        | +39 | +66         | +95 | +95         | +12  | +2.8        | +57 | +5.0       | +0.3 | +0.5 | +0.7 | +1.0 |
| 70%                         | 65% | 60%         | 61% | 53%         | 50%  | 60%         | 52% | 44%        | 49%  | 52%  | 46%  | 50%  |
| Selection Index Values:     |     | SSR: +\$131 |     | NSR: +\$115 |      | SBM: +\$126 |     | NBT: +\$96 |      |      |      |      |

Traits Observed: BWT, 200WT

Notes: A tidy, correct heifer with a lovely presence. Lost a bit of condition while she was unwell before cataloguing but should really come into her own for the sale. Birth Weight 32kg. EP 100/100. Twin.

Purchaser: ..... Price \$:.....

## Lot 35 RAYLEIGH S LILLY R66 (P)

Tattoo: R066

Rego No: AHCR066

Born: 15/05/2020

SOUTH BUKALONG WALLACE 2 (P)  
YAVENVALE BENCHMARK B278 (P)  
YAVENVALE MISS MINERVA W051 (AI) (H)

Sire: **RAYLEIGH LANDSLIDE L118 (TW) (P)**  
RAYLEIGH ALBERTA A4 (AI) (P)  
RAYLEIGH ALYSIA E103 (TW) (P)  
RAYLEIGH L SHAMROCK A26 (P)

DAYS CALIBRE G74 (PP)  
BOWEN CALIBRE K207 (AI) (ET) (PP)  
BOWEN HILDA F8 (AI) (P)

Dam: **RAYLEIGH S CHANEL P29 (P)**  
RAYLEIGH ALBERTA A4 (AI) (P)  
RAYLEIGH S ALYSIA D88 (P)  
RAYLEIGH S UABBA A59 (P)

| May 2021 Hereford BREEDPLAN |     |             |     |             |      |             |     |             |      |      |      |      |
|-----------------------------|-----|-------------|-----|-------------|------|-------------|-----|-------------|------|------|------|------|
| BW                          | 200 | 400         | 600 | MCW         | Milk | SS          | Cwt | EMA         | Rib  | RUMP | RBY% | IMF% |
| +2.8                        | +28 | +46         | +66 | +62         | +11  | +2.5        | +41 | +2.3        | +0.6 | +0.8 | +0.0 | +0.8 |
| 69%                         | 64% | 59%         | 59% | 50%         | 46%  | 54%         | 47% | 39%         | 44%  | 48%  | 41%  | 46%  |
| Selection Index Values:     |     | SSR: +\$126 |     | NSR: +\$117 |      | SBM: +\$143 |     | NBT: +\$109 |      |      |      |      |

Traits Observed: BWT, 200WT

Notes: A sweet, tidy heifers first calf by Landslide. She is structurally correct and quiet. Birth Weight 33kg. EP 100/100.

Purchaser: .....

Price \$:.....

## Lot 36 RAYLEIGH L LACEY R107 (P)

Tattoo: R107

Rego No: AHCR107

Born: 28/07/2020

BOWMONT STORM C093 (H)  
YALGOO BREAK OUT G075 (AI) (P)  
YALGOO BLUSH A036 (P)

Sire: **YALGOO KNICKERBOCKER L205 (PP)**  
STUDBROOK D'ARTAGNION V086 (AI) (ET) (S)  
YALGOO VANESSA E054 (ET) (P)  
YALGOO VANESSA T104 (P)

CANNAWIGRA COMMANDER Z51 (S)  
WHIM PARK DESTROYER D035 (AI) (S)  
NOROLLE V1 NIKKI Z78 (AI) (P)

Dam: **RAYLEIGH L DESIRE J73 (P)**  
RAYLEIGH ALBERTA A4 (AI) (P)  
RAYLEIGH ALYSIA E103 (TW) (P)  
RAYLEIGH L SHAMROCK A26 (P)

| May 2021 Hereford BREEDPLAN |     |             |     |             |      |             |     |             |      |      |      |      |
|-----------------------------|-----|-------------|-----|-------------|------|-------------|-----|-------------|------|------|------|------|
| BW                          | 200 | 400         | 600 | MCW         | Milk | SS          | Cwt | EMA         | Rib  | RUMP | RBY% | IMF% |
| +4.3                        | +32 | +55         | +82 | +69         | +16  | +2.1        | +53 | +4.1        | +0.8 | +1.4 | +0.4 | +0.6 |
| 67%                         | 60% | 57%         | 58% | 52%         | 48%  | 55%         | 51% | 42%         | 48%  | 51%  | 44%  | 48%  |
| Selection Index Values:     |     | SSR: +\$138 |     | NSR: +\$123 |      | SBM: +\$140 |     | NBT: +\$102 |      |      |      |      |

Traits Observed: BWT

Notes: A beautiful soft skin young heifer by Yalgoo Knickerbocker L205. An easy doing heifer with plenty of depth, length and great cosmetics. Birth Weight 38kg. EP 100/100.

Purchaser: .....

Price \$:.....

## Lot 37 RAYLEIGH S LACEY R106 (P)

Tattoo: R106

Rego No: AHCR106

Born: 23/07/2020

BOWMONT STORM C093 (H)  
YALGOO BREAK OUT G075 (AI) (P)  
YALGOO BLUSH A036 (P)  
Sire: **YALGOO KNICKERBOCKER L205 (PP)**  
STUDBROOK D'ARTAGNION V086 (AI) (ET) (S)  
YALGOO VANESSA E054 (ET) (P)  
YALGOO VANESSA T104 (P)

MOUNTAIN VALLEY ROCKYNED B1 (P)  
CASCADE EL DORADO E27 (P)  
CASCADE IRISH MAID A37 (AI) (P)  
Dam: **RAYLEIGH S ELOISE K7 (AI) (P)**  
YAVENVALE BENCHMARK B278 (P)  
RAYLEIGH S BELLA G74 (P)  
RAYLEIGH S SHAMROCK Z47 (P)

| May 2021 Hereford BREEDPLAN |     |             |     |             |      |             |     |             |      |      |      |      |
|-----------------------------|-----|-------------|-----|-------------|------|-------------|-----|-------------|------|------|------|------|
| BW                          | 200 | 400         | 600 | MCW         | Milk | SS          | Cwt | EMA         | Rib  | RUMP | RBY% | IMF% |
| +4.9                        | +37 | +62         | +91 | +77         | +15  | +2.5        | +61 | +4.7        | +0.5 | +1.2 | +1.0 | +0.7 |
| 68%                         | 61% | 59%         | 59% | 53%         | 50%  | 57%         | 52% | 44%         | 49%  | 52%  | 46%  | 50%  |
| Selection Index Values:     |     | SSR: +\$154 |     | NSR: +\$141 |      | SBM: +\$156 |     | NBT: +\$113 |      |      |      |      |

Traits Observed: BWT

Notes: A nice young Knickerbocker heifer with impressive length of body and a tidy set of numbers. Birth Weight 40kg. EP 100/100.

Purchaser: .....

Price \$:.....

## Lot 38 RAYLEIGH L LACEY R103 (P)

Tattoo: R103

Rego No: AHCR103

Born: 13/07/2020

BOWMONT STORM C093 (H)  
YALGOO BREAK OUT G075 (AI) (P)  
YALGOO BLUSH A036 (P)  
Sire: **YALGOO KNICKERBOCKER L205 (PP)**  
STUDBROOK D'ARTAGNION V086 (AI) (ET) (S)  
YALGOO VANESSA E054 (ET) (P)  
YALGOO VANESSA T104 (P)

SOUTH BUKALONG WALLACE 2 (P)  
YAVENVALE BENCHMARK B278 (P)  
YAVENVALE MISS MINERVA W051 (AI) (H)  
Dam: **RAYLEIGH L BELLA G88 (P)**  
HEATHERDALE BONANZA Z48 (AI) (P)  
RAYLEIGH L BONNIE E8 (AI) (P)  
RAYLEIGH L UABBA A90 (P)

| May 2021 Hereford BREEDPLAN |     |             |     |             |      |             |     |             |      |      |      |      |
|-----------------------------|-----|-------------|-----|-------------|------|-------------|-----|-------------|------|------|------|------|
| BW                          | 200 | 400         | 600 | MCW         | Milk | SS          | Cwt | EMA         | Rib  | RUMP | RBY% | IMF% |
| +5.9                        | +38 | +63         | +93 | +74         | +14  | +2.8        | +59 | +4.4        | +0.5 | +1.0 | +1.2 | +0.7 |
| 69%                         | 61% | 58%         | 59% | 52%         | 50%  | 55%         | 51% | 42%         | 48%  | 51%  | 45%  | 49%  |
| Selection Index Values:     |     | SSR: +\$166 |     | NSR: +\$151 |      | SBM: +\$163 |     | NBT: +\$114 |      |      |      |      |

Traits Observed: BWT

Notes: Another lovely soft young Knickerbocker heifer with plenty of capacity and thickness across the top. Out of a good old cow line. Birth Weight 42kg. EP 100/100.

Purchaser: .....

Price \$:.....



## Lot 39 RAYLEIGH S JAN R61 (P)

Tattoo: R061

Rego No: AHCR061

Born: 09/05/2020

KOANUI ROCKET 0219 (IMP NZL) (P)

BOWEN EXTREMIST E96 (AI) (P)

BOWEN ROLLINA B385 (P)

Sire: RAYLEIGH NIFTY N004 (AI) (S)

GLENTREVOR WALLACE H427 (AI) (PP)

COURALLIE PRUDENCE L503 (AI) (P)

COURALLIE D074 PRUDENCE H116 (TW) (H#)

YALGOO BREAK OUT G075 (AI) (P)

YALGOO KNICKERBOCKER L205 (PP)

YALGOO VANESSA E054 (ET) (P)

Dam: RAYLEIGH S LACEY P94 (P)

BRAYBOOK FEDERER F448 (P)

RAYLEIGH S FRED A J29 (AI) (P)

RAYLEIGH S TIFFANY F68 (P)

### May 2021 Hereford BREEDPLAN

| BW                      | 200 | 400 | 600 | MCW         | Milk        | SS          | Cwt         | EMA  | Rib  | RUMP | RBY% | IMF% |
|-------------------------|-----|-----|-----|-------------|-------------|-------------|-------------|------|------|------|------|------|
| +3.7                    | +34 | +59 | +86 | +78         | +18         | +2.6        | +57         | +4.2 | +0.2 | +0.7 | +1.3 | +0.3 |
| 67%                     | 61% | 55% | 55% | 47%         | 44%         | 48%         | 44%         | 36%  | 42%  | 45%  | 38%  | 42%  |
| Selection Index Values: |     |     |     | SSR: +\$143 | NSR: +\$131 | SBM: +\$154 | NBT: +\$115 |      |      |      |      |      |

Traits Observed: BWT, 200WT

Notes: A heifer's first calf by outcross sire Rayleigh Nifty N004. A correct, growthy heifer that should develop into a nice cow.

Birth Weight 38kg. EP 100/100.

Purchaser: .....

Price \$:.....

## Lot 40 RAYLEIGH J LILLY R101 (H#)

Tattoo: R101

Rego No: AHCR101

Born: 13/07/2020

SOUTH BUKALONG WALLACE 2 (P)

YAVENVALE BENCHMARK B278 (P)

YAVENVALE MISS MINERVA W051 (AI) (H)

Sire: RAYLEIGH LANDSLIDE L118 (TW) (P)

RAYLEIGH ALBERTA A4 (AI) (P)

RAYLEIGH ALYSIA E103 (TW) (P)

RAYLEIGH L SHAMROCK A26 (P)

DAYS CALIBRE G74 (PP)

BOWEN CALIBRE K207 (AI) (ET) (PP)

BOWEN HILDA F8 (AI) (P)

Dam: RAYLEIGH J CHANEL P27 (P)

WHIM PARK DESTROYER D035 (AI) (S)

RAYLEIGH J DESIRE H53 (P)

RAYLEIGH J SHAMROCK Z18 (P)

### May 2021 Hereford BREEDPLAN

| BW                      | 200 | 400 | 600 | MCW         | Milk        | SS          | Cwt         | EMA  | Rib  | RUMP | RBY% | IMF% |
|-------------------------|-----|-----|-----|-------------|-------------|-------------|-------------|------|------|------|------|------|
| +3.3                    | +29 | +49 | +67 | +62         | +13         | +2.1        | +43         | +2.6 | +0.9 | +1.2 | -0.1 | +0.7 |
| 58%                     | 57% | 56% | 55% | 48%         | 44%         | 53%         | 47%         | 38%  | 43%  | 47%  | 40%  | 45%  |
| Selection Index Values: |     |     |     | SSR: +\$123 | NSR: +\$113 | SBM: +\$137 | NBT: +\$102 |      |      |      |      |      |

Traits Observed: BWT

Notes: An eye catching heifer's first calf. Q101 is a very well balance, beautifully shaped and easy doing heifer that is only in the sale due to being horned. Out of one of our favourite P show heifers. Birth Weight 38kg. EP 100/100.

Purchaser: .....

Price \$:.....

## Lot 41 RAYLEIGH J JAN R65 (P)

Tattoo: R065

Rego No: AHCR065

Born: 13/05/2020

KOANUI ROCKET 0219 (IMP NZL) (P)

BOWEN EXTREMIST E96 (AI) (P)

BOWEN ROLLINA B385 (P)

Sire: RAYLEIGH NIFTY N004 (AI) (S)

GLENTREVOR WALLACE H427 (AI) (PP)

COURALLIE PRUDENCE L503 (AI) (P)

COURALLIE D074 PRUDENCE H116 (TW) (H#)

YAVENVALE BENCHMARK B278 (P)

RAYLEIGH LANDSLIDE L118 (TW) (P)

RAYLEIGH Alysia E103 (TW) (P)

Dam: RAYLEIGH J LILLY P30 (P)

DEBARRY TRIBULUS 2 (P)

RAYLEIGH J TIFFANY D73 (P)

RAYLEIGH J SHAMROCK Z18 (P)

| May 2021 Hereford BREEDPLAN |     |             |     |             |      |             |     |             |      |      |      |      |
|-----------------------------|-----|-------------|-----|-------------|------|-------------|-----|-------------|------|------|------|------|
| BW                          | 200 | 400         | 600 | MCW         | Milk | SS          | Cwt | EMA         | Rib  | RUMP | RBY% | IMF% |
| +2.1                        | +30 | +51         | +71 | +64         | +16  | +2.3        | +48 | +2.7        | +0.7 | +1.4 | +0.5 | +0.2 |
| 67%                         | 61% | 54%         | 55% | 47%         | 45%  | 49%         | 44% | 35%         | 41%  | 44%  | 38%  | 42%  |
| Selection Index Values:     |     | SSR: +\$129 |     | NSR: +\$122 |      | SBM: +\$147 |     | NBT: +\$109 |      |      |      |      |

Traits Observed: BWT,200WT

Notes: A nice moderate framed, feminine and clean skinned heifer with plenty of length. By Rayleigh Nifty and out of a Landslide heifer. Birth Weight 35kg, EP 100/100.

Purchaser: .....

Price \$:.....

## Lot 42 RAYLEIGH O ADELAIDE R16 (TW) (P)

Tattoo: R016

Rego No: AHCR016

Born: 12/04/2020

ALLENDALDE YACKA (AI) (P)

ALLENDALDE ANZAC E114 (PP)

ALLENDALDE DAWN B22 (AI) (ET) (P)

Sire: INJEMIRA ANZAC L170 (AI) (ET) (PP)

KAIRURU ABERDEEN 03 0047 (IMP NZL) (P)

INJEMIRA HAPPY DAY D053 (AI) (ET) (P)

INJEMIRA HAPPY DAY Y012 (H)

SOUTH BUKALONG WALLACE 2 (P)

YAVENVALE BENCHMARK B278 (P)

YAVENVALE MISS MINERVA W051 (AI) (H)

Dam: RAYLEIGH O BELLA J93 (P)

TYCOLAH GOLD RUSH (S)

RAYLEIGH O GOLDIE G23 (AI) (P)

RAYLEIGH O TIFFANY C80 (P)

| May 2021 Hereford BREEDPLAN |     |             |     |             |      |             |     |             |      |      |      |      |
|-----------------------------|-----|-------------|-----|-------------|------|-------------|-----|-------------|------|------|------|------|
| BW                          | 200 | 400         | 600 | MCW         | Milk | SS          | Cwt | EMA         | Rib  | RUMP | RBY% | IMF% |
| +4.2                        | +33 | +53         | +74 | +53         | +18  | +1.9        | +53 | +4.6        | +1.7 | +2.3 | +0.4 | +1.2 |
| 69%                         | 64% | 60%         | 61% | 54%         | 50%  | 57%         | 52% | 44%         | 50%  | 53%  | 47%  | 50%  |
| Selection Index Values:     |     | SSR: +\$147 |     | NSR: +\$137 |      | SBM: +\$157 |     | NBT: +\$113 |      |      |      |      |

Traits Observed: BWT,200WT

Notes: The only Injemira Anzac L170 heifer offered in the sale. A twin that should grow into a nice cow with plenty of power. Good set of data. Birth Weight 29kg, EP 100/100.

Purchaser: .....

Price \$:.....

# Lot 43 RAYLEIGH S JAN R80 (P)

Tattoo: R080

Rego No: AHCR080

Born: 26/05/2020

KOANUI ROCKET 0219 (IMP NZL) (P)

BOWEN EXTREMIST E96 (AI) (P)

BOWEN ROLLINA B385 (P)

Sire: RAYLEIGH NIFTY N004 (AI) (S)

GLENTREVOR WALLACE H427 (AI) (PP)

COURALLIE PRUDENCE L503 (AI) (P)

COURALLIE D074 PRUDENCE H116 (TW) (H#)

YALGOO BREAK OUT G075 (AI) (P)

YALGOO KNICKERBOCKER L205 (PP)

YALGOO VANESSA E054 (ET) (P)

Dam: RAYLEIGH S LACEY P96 (P)

YAVENVALE BENCHMARK B278 (P)

RAYLEIGH S BELLA H36 (P)

RAYLEIGH S TIFFANY E76 (P)

## May 2021 Hereford BREEDPLAN

| BW                      | 200 | 400         | 600 | MCW         | Milk | SS          | Cwt | EMA         | Rib  | RUMP | RBY% | IMF% |
|-------------------------|-----|-------------|-----|-------------|------|-------------|-----|-------------|------|------|------|------|
| +2.8                    | +33 | +58         | +83 | +69         | +18  | +2.5        | +57 | +4.0        | +0.6 | +1.3 | +1.1 | +0.6 |
| 66%                     | 59% | 54%         | 55% | 47%         | 44%  | 49%         | 45% | 36%         | 42%  | 45%  | 38%  | 43%  |
| Selection Index Values: |     | SSR: +\$158 |     | NSR: +\$149 |      | SBM: +\$173 |     | NBT: +\$127 |      |      |      |      |

Traits Observed: BWT,200WT

Notes: A lovely soft easy doing, clean skinned Rayleigh Nifty heifer to finish the sale. A sweet heifer that should develop into a moderate cow with plenty of carcass. Birth Weight 32kg. EP 100/100.

Purchaser: .....

Price \$:.....



# 2020 SALE TOPPERS

.....  
**LOT 8**  
**RAYLEIGH**  
**PEGASUS P47**

*Purchased for \$12000 by  
A & V & W Fisher.*  
.....



.....  
**LOT 1**  
**RAYLEIGH**  
**POPE P101**

*Purchased for \$11000 by  
Martin and Barb Austin.*  
.....

.....  
**LOT 9**  
**RAYLEIGH**  
**PHILADELPHIA**  
**P82**

*Purchased for \$11000 by  
Tom Lyons Parmedman  
Partnership*  
.....



# 2020 TOP PRICE HEIFERS



## LOT 23 - RAYLEIGH L LILLY Q028

*Purchased for \$4000 by Eclipse Poll Herefords.*



## LOT 29 - RAYLEIGH L LACEY Q036

*Purchased for \$4000 by Killarney Station.*





ABCD1234  
**M124**

# DNA

## Sampling Simplified

With the ALLFLEX TISSUE SAMPLING UNIT (TSU)



- Easiest way to collect a quality sample
- Vials fit in standard lab well plate (96 vials)
- Efficient and cost effective
- Available with paired NLIS and management tags



**Allflex**<sup>®</sup>

Livestock Intelligence™

Questions? 1300 138 247 or  
customerservice@allflex.com.au

[www.allflex.com.au](http://www.allflex.com.au)



# RAYLEIGH

POLL HEREFORDS

EST. 1957

*The Holcombe family would like to thank all clients and prospective purchasers for their support of our Annual Bull & Female Sale.*

*We would like to wish you all success in the upcoming sale.*

*Food and Refreshments to be served on Sale Day.*

*Coffee by "Kimmi & Co"*

# EFFICIENCY - ECONOMIC BEEF PRODUCTION

Feeding cattle is the single, largest variable expense in commercial beef production. Profitability depends on costs and revenue.

Hereford cattle can decrease feed requirements and improve feed utilisation to reshape profitability and sustainability for farmers.

## ***What does it mean for the producer?***

Whiteface Cattle Consume Less Feed – Their daily feed intake is 1.2kg/day less than Angus cattle.

Whiteface Cattle Maintain Growth & Gain – They consume 6% less feed for the same gain as Angus cattle.

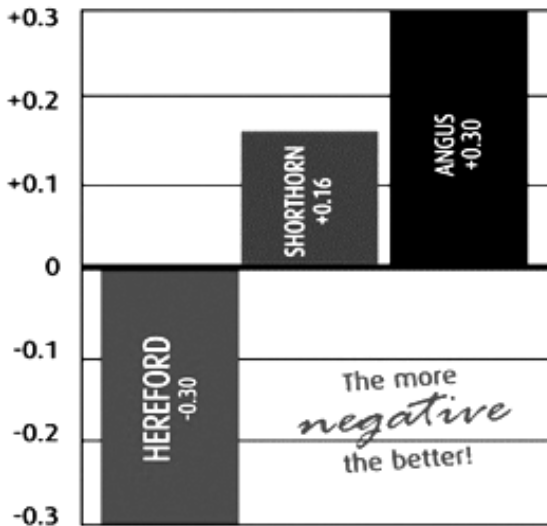
Whiteface Cattle Can Boost Your Herd Size – You run 106 Poll Herefords on the same ground and feed supply as 100 Angus cattle.

Whiteface Cattle Save You \$\$\$\$ And Time – Less feed, means less inputs, means less cost. It takes an extra 61 tonnes of feed annually for a 100-cow Angus herd compared to a 100-cow Hereford herd.

## ***Science has proven it***

Practical farmers have always known that Herefords have the genetic potential to improve a herd's feed intake and feed utilisation. Now science has proven it.

Latest industry research, reveals that Hereford is the number one British breed when it comes to net feed intake (NFI).



Conducted by the Cooperative Research Centre for Cattle and Beef Quality (Beef CRC), with collected data analysed by the Animal Genetics and Breeding Unit (AGBU) at the University of New England, Armidale, the research reveals Herefords are ahead of their Angus and Shorthorn competitors with significantly lower NFI.

Simply, Hereford-sired progeny consumed significantly less feed daily, without sacrificing growth and gain.



## NOTES

This image shows a single sheet of white paper with horizontal ruling lines. The lines are evenly spaced and run across the width of the page. There are no margins, text, or other markings on the paper.



Thousands of farmers.  
One specialist broker.

Contact us for a chat about your  
farm and crop insurance needs.

|                  |                     |
|------------------|---------------------|
| <b>Tamworth</b>  | <b>02 5794 7100</b> |
| <b>Toowoomba</b> | <b>07 4639 7100</b> |
| <b>Sydney</b>    | <b>02 9424 1894</b> |



**AgriRisk**

A Gallagher Company

[www.agririsk.com.au](http://www.agririsk.com.au)

Ask us about our other insurance solutions:



Cover is subject to the Policy terms and conditions. You should consider if the insurance is suitable for you and read the Product Disclosure Statement (PDS) and Financial Services Guide (FSG) before making a decision to acquire insurance. These are available at [www.ajg.com.au](http://www.ajg.com.au). REF2715-0520-2.2

# NARRABRI FARM CENTRE UNDER NEW OWNERSHIP



**NARRABRI  
FARM  
CENTRE**



20 Eleanor St, Narrabri NSW 2390  
**02 6792 2352**



Sale Interfaced Online with



AuctionsPlus™

[www.rayleighpollherefords.com.au](http://www.rayleighpollherefords.com.au)

0427 285 226 | 0428 285 226 | 0429 694 435



**OFFERING 28 BULLS & 15 REGISTERED HEIFERS**

