



RAYLEIGH

POLL HEREFORDS

EST. 1957

10TH ANNUAL ON PROPERTY BULL & FEMALE SALE

Friday 12th July 2019

Inspections - 10am • Sale Starts - 1pm

- 30 Bulls
- 12 Heifers

*FEATURING RAYLEIGH'S FIRST SONS
OF \$70,000 SIRE, BOWEN CALIBRE K207*

Jeff & Robyn Holcombe

“Rayleigh”, 31921 Kamilaroi Hwy, Burren Junction

P. 0427 285 226 • (02) 6828 5226

Email: rayleigh8@bigpond.com • www.rayleighpollherefords.com.au

Selling Agent: Bruce Evans - Landmark Phone: 0428 921 599

Stud Stock Agent: John Settree Phone: 0408 297 368

OUR BREEDING OPERATION

Rayleigh Poll Hereford Stud was established in 1957. Now with over 60 years of experience in the industry, we produce lines of cattle that are reliable in both their performance and predictability.

The aim of the Stud has always been to breed functional and efficient cattle, noted for their ability to fatten on pasture and carry themselves through tough times. Structural soundness, doing ability and natural muscling are at the forefront of our program to ensure this vision is met. Maintaining productivity and fertility in dry times are further attributes integral in our program. Being from a marginal climate our cattle are well accustomed to these conditions. This allows for our bulls to be well adapted, low fuss and ready to work.

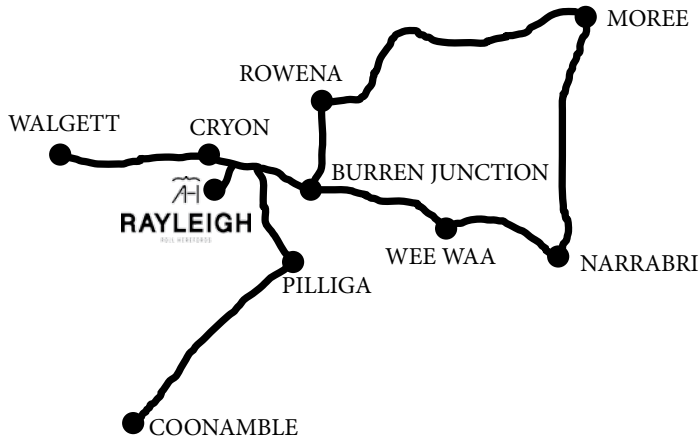
ABOUT THE BULLS

In any beef operation, we recognise that carcass and performance are integral components in maximising profitability. The 2019 sale draft sees one third of the bulls offered in the top 20% of the breed for IMF & 80% of the draft equal to or better than breed average for EMA. Allowing us to present a line of industry relevant bulls with strong visual presence, that are backed by performance data.

The 2019 Rayleigh bull sale provides the first opportunity to obtain genetics in our \$70,000 sire, Bowen Calibre K207. These are a line of bulls with extra power & huge performance, that don't compromise on softness. Combined with the extra length offered by the Karabar's and low birth weights of the Robin Hood's, there is a bull in the draft that should suit most purposes.



SALE INFORMATION



Rayleigh Poll Hereford Stud is located 35km west of Burren Junction and 60km east of Walgett on the Kamilaroi Highway.

- All cattle will be available for inspection from 10am on sale day, with the auction to commence at 1pm sharp. Prior inspection can be arranged by contacting the vendor or selling agents.
- The sale will be conducted using the open cry auction system, with an online bidding option available through Auctions Plus. Cattle will be presented for auction via video. Please note Rayleigh has good mobile service.
- GST is to be added onto the purchase price at the fall of the auctioneer's hammer. You will be invoiced purchase price plus GST.
- A rebate of 2% will be offered to outside agents introducing buyers in writing 24 hours prior to the sale, and attending the sale with the client.
- A Buyer's Instruction Slip must be completed by the purchaser or representative and handed to the auctioneer prior to leaving the sale. No verbal instructions will be accepted.
- We offer free delivery within 200kms of Rayleigh. Delivery can be taken from the completion of the sale, with transport options available on sale day.
- All care will be taken with the wellbeing of animals prior to delivery. However, should unforeseen injury or illness occur, no responsibility will be accepted by the vendor. Insurance is recommended.
- There is no vendor insurance on sale animals. It will be the responsibility of the buyer to insure their purchases. Insurance representatives will be in attendance on sale day.
- All bulls have been 7 in 1, Pestiguard and Vibrio vaccinated, as well as treated with Dectomax injectable.

SALE INFORMATION

- All bulls have been semen, morphology and soundness tested by Scott Parry, North West Vets. Certificates are available on request.
- A selection of bulls have been DNA and SNIP tested for this year's sale. Should any additional sires require such testing, this will be completed upon request and at the vendor's expense.
- Should there be any issues with your purchases, we would like to be the first to know. All bulls come with a guarantee to naturally breed. If your bull fails to breed within the first 6 months, a replacement bull or credit (less salvage value) can be arranged. This excludes loss due to injury or illness sustained post sale day. Please contact us to discuss any issues and provide a veterinary certificate.
- We welcome any feedback as to how your bull is performing. This strengthens our future breeding program and ensures we continue to produce cattle suited to your needs.
- Rayleigh Poll Herefords have a Biosecurity plan with a JBAS – 7.
- Visitors enter the cattle pens at their own risk. Children and prams must not enter the yards.
- Free lunch and refreshments will be provided on sale day.
- Accommodation can be arranged by contacting the selling agents.

Disclaimer

Whilst all due care and attention has been paid to the accuracy in the compilation of this catalogue, neither the vendor nor selling agents or representatives therefore assume any responsibility whatsoever for the correctness, use or interpretation of the information on animals included in this catalogue. Potential buyers are advised to inspect animals prior to sale.

FUTURE SIRES



Injemira Anzac L170 - IHSL170

Sire: Allendale Anzac E114

Dam: Injemira Happy Day D053

BW	200	400	600	MCW	MILK	SS	CW	EMA	RIB	RUMP	RBY%	IMF%
+7.0	+46	+74	+105	+88	+21	+1.9	+76	+6.4	+1.2	+1.6	+0.8	+1.6

Index Values	Super	Grass	Grain	EU
	+\$124	+\$119	+\$150	+\$133



Yalgoo Knickerbocker L205 – SODL205

Sire: Yalgoo Break Out G075

Dam: Yalgoo Vanessa E054

BW	200	400	600	MCW	MILK	SS	CW	EMA	RIB	RUMP	RBY%	IMF%
+6.0	+39	+66	+101	+89	+13	+2.8	+64	+5.4	+0.4	+0.9	+1.1	+1.1

Index Values	Super	Grass	Grain	EU
	+\$116	+\$112	+\$138	+\$129

REFERENCE SIRES



Bowen Calibre K207- BWNK207

Sire: Days Calibre G74

Dam: Bowen Hilda F8

BW	200	400	600	MCW	MILK	SS	CW	EMA	RIB	RUMP	RBY%	IMF%
+9.1	+41	+70	+103	+119	+4	+3.5	+60	+6.1	+0.2	+0.1	+1.3	+1.3

Index Values

Super	Grass	Grain	EU
+\$100	+\$93	+\$119	+\$114



Days Robin Hood J183 – DAYJ183

Sire: Days Calibre G74

Dam: Allendale Fancy U5

BW	200	400	600	MCW	MILK	SS	CW	EMA	RIB	RUMP	RBY%	IMF%
+2.2	+24	+39	+51	+57	+8	+2.4	+34	+5.8	+1.5	+3.4	+0.3	+1.5

Index Values

Super	Grass	Grain	EU
+\$101	+\$105	+\$127	+\$117



Mountain Valley Karabar K203 – SBDK203

Sire: Mountain Valley Gambler G14

Dam: Mountain Valley Shamrock C12

BW	200	400	600	MCW	MILK	SS	CW	EMA	RIB	RUMP	RBY%	IMF%
+9.2	+53	+94	+136	+127	+15	+2.5	+82	+4.7	-0.3	0.0	+1.5	+0.1

Index Values

Super	Grass	Grain	EU
+\$98	+\$84	+\$93	+\$100



The Ranch Marksman H14 – DLRH14

Sire: Tycolah H-Bomb

Dam: The Ranch Duchess A37

BW	200	400	600	MCW	MILK	SS	CW	EMA	RIB	RUMP	RBY%	IMF%
+5.5	+28	+50	+69	+67	+15	+1.7	+35	+2.4	-0.9	-1.5	+1.4	-0.2

Index Values

Super	Grass	Grain	EU
+\$68	+\$63	+\$69	+\$80

REFERENCE SIRES



Rayleigh Hercules H24 – AHCH24

Sire: Remitall Boomer 46B (IMP CAN)

Dam: Rayleigh M Uabba Y47

BW	200	400	600	MCW	MILK	SS	CW	EMA	RIB	RUMP	RBY%	IMF%
+4.9	+31	+43	+52	+51	+16	+0.9	+31	+4.2	-0.3	-1.7	+1.1	-0.3

Index Values	Super	Grass	Grain	EU
	+\$51	+\$48	+\$48	+\$61



Rayleigh Landslide L118 – AHCL118

Sire: Yavenvale Benchmark B278

Dam: Rayleigh Alysia E103

BW	200	400	600	MCW	MILK	SS	CW	EMA	RIB	RUMP	RBY%	IMF%
+1.2	+22	+32	+47	+35	+18	+2.1	+29	+1.0	+2.0	+3.1	-0.7	+0.4

Index Values	Super	Grass	Grain	EU
	+\$88	+\$89	+\$98	+\$97



Injemira Anzac H006

Sire: Allendale Anzac E114

Dam: Injemira Marinda B028

BW	200	400	600	MCW	MILK	SS	CW	EMA	RIB	RUMP	RBY%	IMF%
+6.5	+51	+88	+120	+107	+18	+3.5	+88	+6.3	+1.1	+1.4	+1.2	+1.3

Index Values	Super	Grass	Grain	EU
	+\$133	+\$126	+\$155	+\$144



Tycolah Lynwood H184

Sire: Valma Prestige E60

Dam: Tycolah Asteret A129

BW	200	400	600	MCW	MILK	SS	CW	EMA	RIB	RUMP	RBY%	IMF%
+7.7	+41	+60	+87	+88	+11	+2.4	+48	+3.0	-0.8	-1.6	+1.4	0.0

Index Values	Super	Grass	Grain	EU
	+\$70	+\$62	+\$69	+\$79

Bowen Extremist E96

Sire: Koanui Rocket 0219 (IMP NZL)

Dam: Bowen Rollina B385

BW	200	400	600	MCW	MILK	SS	CW	EMA	RIB	RUMP	RBY%	IMF%
+0.2	+36	+56	+84	+76	+24	+3.3	+65	+4.8	+0.8	+1.7	+1.8	+0.2

Index Values	Super	Grass	Grain	EU
	+\$116	+\$112	+\$113	+\$121

BREEDPLAN MADE EASY

Breedplan is a performance evaluation program that compares bulls “on a level playing field” for a number of important commercial traits.

The difference between a bull's genetics and the breed benchmark for a range of traits is reported as an **Estimated Breeding Value (EBV)** - an estimate of how a bull will perform as a parent rather than how he looks on the day.

EBVs can be positive (+) or negative (-), ie, above or below the breed benchmark of zero.

EBVs are calculated from the available performance information on the animal, its parents, progeny and its close relatives within the breed.

The information is adjusted for age, dam age, and for differences between herds, years, season of calving, management effects and for mating and selection biases. The heritability of the trait is also taken into account.

EBVs - what do they tell me about a bull

BIRTH

Birth Weight: The Birth Weight EBV (kg) is based on the measured birth weight of animals, adjusted for dam age. The lower the value the lighter the calf at birth and the lower the likelihood of a difficult birth. This is particularly important when selecting sires for use over heifers.

FERTILITY

Scrotal Size: The Scrotal Size EBV (cm) is an indicator of male fertility. Higher (positive) EBVs indicate higher fertility. Higher SS EBVs are also positively associated with female fertility through earlier age of puberty.

GROWTH

Milk: 200-Day Milk EBV (kg) is an estimate of the contribution that a dam makes to the 200 day weight of her progeny. For sires, this is an indication of the contribution that his daughters will make to the 200 day weight of their calves.

200-Day Growth: The 200-Day EBV (kg) is calculated from the weight of animals taken between 80 and 300 days of age. Values are adjusted to 200 days and for dam age. This EBV is the best single estimate of an animal's genetic merit for growth to early ages (ie. 8-10 months).

400-Day Weight: The 400-Day Weight EBV (kg) is calculated from the weight of progeny taken between 301 and 500 days of age, adjusted to 400 days and for dam age. This EBV is the best single estimate of an animal's genetic merit for yearling weight.

600-Day Weight: The 600-Day Weight EBV (kg) is calculated from the weight of progeny taken between 501 and 900 days of age, adjusted to 600 days and for dam age. This EBV is the best single estimate of an animal's genetic merit for growth beyond yearling age.

CARCASE

Eye Muscle Area: The EMA EBV (cm²) estimates genetic differences in eye muscle area at the 12/13th rib site of a 300kg dressed carcass. More positive EBVs indicate better muscling on animals.

Rib Fat: The Rib Fat EBV (mm) estimates the genetic differences in fat depth at the 12/13th rib in a 300kg dressed carcass. More positive EBVs indicate more subcutaneous fat and earlier maturity.

Rump Fat: The Rump Fat EBV (mm) estimates the genetic differences in fat depth at the P8 site of a 300kg dressed carcass. More positive EBVs indicate more subcutaneous fat and earlier maturity.

Intramuscular Fat Percent: The IMF% EBV (%) is an estimate of the genetic difference in the percentage of intra-muscular fat at the 12/13th rib site in a 300kg carcass. More positive EBVs indicate higher marbling.

BREED AVERAGE - To aid in your interpretation of the GROUP BREEDPLAN EBV'S in this catalogue please find below the Breed Average EBV's for the 2017 drop calves.

BW	200	400	600	MCW	MILK	SS	CW	EMA	RIB	RUMP	RBY%	IMF%
+4.4	+33	+54	+77	+68	+16	+2.0	+50	+3.2	+0.5	+0.5	+0.8	+0.4

The Group Breedplan Estimated Breeding Values contained in this catalogue were supplied by the Agricultural Business Research Institute from data supplied by the breeders. Neither Herefords Australia Limited nor the ABRI oversee or audit the collection of this data. Log on to www.herefordsastralia.com.au for a full description and explanation of all Breedplan, EBVs, Accuracies, Selection Indexes and Comparing Animals.

HEREFORD SELECTION INDEXES

There are currently four different selection indexes calculated for Australian Hereford animals. These are:

- Supermarket Index
- Grass Fed Steer Index
- Grain Fed Steer Index
- EU Index

Each selection index describes a different production/market scenario and relates to a typical, self replacing Hereford herd in temperate Australia targeting the following specifications.

Supermarket Index - Estimates the genetic differences between animals in net profitability per cow joined for an example commercial herd targeting the domestic supermarket trade. Steers are either finished on grass or grain (eg. 50 - 70 days). Steers are assumed marketed at 450kg live weight (250kg HSCW and 12mm P8 fat depth) at 17 months of age. Daughters are retained for breeding. In response to industry feedback regarding eating quality and tenderness, a small premium has been placed on marbling.

Grass Fed Steer Index - Estimates the genetic differences between animals in net profitability per cow joined for an example commercial herd targeting pasture finished steers. Steers are assumed marketed at 600kg live weight (33kg HSCW and 8 mm P8 fat depth) at 23 months of age. Daughters are retained for breeding. In response to industry feedback regarding eating quality and tenderness, a small premium has been placed on marbling.

Grain Fed Steer Index - Estimates the genetic differences between animals in net profitability per cow joined for an example commercial herd targeting pasture grown steers with a 125 day feedlot finishing period for the grain fed markets. Steers are assumed marketed at 600kg live weight [330kg HSCW and 20mm P8 fat depth) at 20 months of age. Daughters are retained for breeding. There is a significant premium if steers reach a marble score of 2 or greater.

EU Index - Estimates the genetic differences between animals in net profitability per cow joined for an example commercial herd targeting pasture finished steers for the EU market. Steers are assumed marketed at 620kg live weight (340kg HSCW and 14mm P8 fat depth) at 24 months of age. Daughters are retained for breeding. There is no marbling requirement.

Hereford Selection Indexes make bull buying easier. They take the hard work out of knowing how much emphasis you should give to each of the available EBVs when selecting a replacement sire by weighting the available EBVs according to their impact on the long-term profitability of your herd, balancing fertility and maternal traits with growth and carcass traits. The index is in fact a multi-trait EBV that estimates the relative value of each animal to your chosen market goal - reflecting the extra earning capacity per cow joined in a self replacing commercial herd.

Animals can be compared using Selections Index values in the same manner as comparing them using EBVs for single traits, but instead of looking at a large number of EBVs (up to 18) the first screening at least, can be on the single index value. You may then fine tune the match with your herd by considering individual EBVs.

Typical production statistics, prices and costs underlie each Index. Each index has subtly different input statistics appropriate to the market end-point, eg. age and weight at sale, marbling etc.

Benefits and costs evaluated include both those for the long-term sustainability of the cow herd and those for the sale animal from birth to slaughter. Essential compromises between traits such as the flow-on effects of increased growth on birth-weight & cow maintenance are accounted for when calculating indexes.

In pasture phases, feed is assumed to be a limiting factor for part of the year, and that any increase in feed requirement at herd level is a cost. The assumed herd calving rate and level of calving difficulty each reflect a moderate level of concern that these traits not change unfavourably from the selection of new sires.

Animals will have selection indexes reported only if sufficient information has been recorded for them.

Specifically, an animal must have:

- performance recorded with BREEDPLAN or progeny with performance recorded
- one of the birth EBVs (B.Wt, CED) with an accuracy of 40% or higher
- one of the growth EBVs (200, 400, 600) with an accuracy of 40% or higher
- one of the scan or carcass EBVs (EMA, IMF, Fat Depth) with an accuracy of 40% or higher
- one of the fertility EBVs (DTC, SS, CEDtrs) with an accuracy of 30% or higher

Selection index values will not be reported for animals that do not meet these criteria.

SELECTION INDEX VALUES BREED AVERAGES

Supermarket Index (\$)	Grass Fed Steer Index (\$)	Grain Fed Steer Index (\$)	EU Index (\$)
+87	+83	+95	+97

Lot 1 RAYLEIGH NICKLEBACK N028 (P)

Tattoo: N028

Rego No: AHCN028

Born: 15/05/2017

ALLENDALE WATERHOUSE D1 (PP)

DAYS CALIBRE G74 (PP)

ALLENDALE DAWN C62 (AI) (P)

Sire: **DAYS ROBIN HOOD J183 (PP)**

ALLENDALE KENWORTH 2 (P)

ALLENDALE FANCY U5 (AI) (P)

ALLENDALE FANCY 248 (AI) (P)

BOWEN TORNADO Z260 (AI) (ET) (PP)

RILO PARK UNSHAKEABLE (AI) (ET) (P)

BOWEN MATCHLESS L140 (AI) (P)

Dam: **RAYLEIGH R UNITY F51 (H#)**

MINLACOWIE VALVE (AI) (P)

RAYLEIGH JANICE Y57 (P)

REDEEMABLE JANICE RS (P)

May 2019 Hereford GROUP BREEDPLAN												
BW	200	400	600	MCW	Milk	SS	Cwt	EMA	Rib	RUMP	RBY%	IMF%
+5.8	+35	+56	+80	+84	+15	+2.8	+44	+5.5	-0.7	-0.7	+2.1	+0.8
63%	64%	62%	64%	56%	52%	68%	54%	46%	50%	53%	46%	50%
Selection Index Values:			S/Market: +\$103		Grass Fed Steer: +\$100			Grain Fed Steer: +\$120		EU: +\$120		

Traits Observed: 200WT(x2),600WT,SS,FAT,EMA,IMF,Genomics

Notes: One of our picks of the Robin Hood sons born at Rayleigh. This is a bull with extreme length of body, good structure and a strong topline. N028 offers natural thickness, while still being refined through the front end. Dam was grand champion 2011 Junior National Show. A bull with top sire potential that could suit heifers. Polled. EP 100/100.

Purchaser:

Price \$:

Lot 2 RAYLEIGH NASHVILLE N101 (PP)

Tattoo: N101

Rego No: AHCN101

Born: 09/07/2017

ALLENDALE WATERHOUSE D1 (PP)

DAYS CALIBRE G74 (PP)

ALLENDALE DAWN C62 (AI) (P)

Sire: **BOWEN CALIBRE K207 (AI) (ET) (PP)**

MAUNGAHINA KINGDOM BAY 070073 (IMP NZL) (P)

BOWEN HILDA F8 (AI) (P)

BOWEN HILDA A101 (AI) (P)

CANNAWIGRA COMMANDER Z51 (S)

WHIM PARK DESTROYER D035 (AI) (S)

NOROLLE V1 NIKKI Z78 (AI) (P)

Dam: **RAYLEIGH L DESIRE H74 (P)**

LJS 23C DEVIATE U101 (AI) (ET) (P)

RAYLEIGH L EVA A63 (AI) (P)

RAYLEIGH L UABBA Y4 (P)

May 2019 Hereford GROUP BREEDPLAN												
BW	200	400	600	MCW	Milk	SS	Cwt	EMA	Rib	RUMP	RBY%	IMF%
+9.9	+43	+71	+104	+119	+11	+2.7	+57	+4.4	-1.1	-2.1	+1.7	+0.2
70%	64%	62%	63%	53%	46%	64%	52%	45%	49%	52%	44%	48%
Selection Index Values:			S/Market: +\$70		Grass Fed Steer: +\$59			Grain Fed Steer: +\$69		EU: +\$80		

Traits Observed: BWT,200WT(x2),600WT,SS,FAT,EMA,IMF,Genomics

Notes: A standout since birth. This is a mobile bull with length, width, depth, structure and loads of red meat. A bull with a lot to offer any operation. Stud Sire Potential. Homozygous Polled. EP 100/100.

Purchaser:

Price \$:

Lot 3 RAYLEIGH NOTINGHAM N067 (PP)

Tattoo: N067

Rego No: AHCN067

Born: 02/06/2017

ALLENDALE WATERHOUSE D1 (PP)

DAYS CALIBRE G74 (PP)

ALLENDALE DAWN C62 (AI) (P)

Sire: **BOWEN CALIBRE K207 (AI) (ET) (PP)**

MAUNGAHINA KINGDOM BAY 070073 (IMP NZL) (P)

BOWEN HILDA F8 (AI) (P)

BOWEN HILDA A101 (AI) (P)

SOUTH BUKALONG WALLACE 2 (P)

YAVENVALE BENCHMARK B278 (P)

YAVENVALE MISS MINERVA W051 (AI) (H)

Dam: **RAYLEIGH L BELLA H81 (P)**

RAYLEIGH ALBERTA A4 (AI) (P)

RAYLEIGH L ALYSIA F12 (P)

RAYLEIGH L POSIE C77 (TW) (P)

May 2019 Hereford GROUP BREEDPLAN

BW	200	400	600	MCW	Milk	SS	Cwt	EMA	Rib	RUMP	RBY%	IMF%
+4.2	+35	+60	+86	+76	+15	+2.6	+62	+6.0	+1.5	+2.5	+1.1	+1.0
71%	66%	63%	66%	57%	47%	73%	54%	47%	50%	54%	48%	49%
Selection Index Values:				S/Market: +\$126	Grass Fed Steer: +\$124			Grain Fed Steer: +\$145			EU: +\$138	

Traits Observed: BWT,200WT(x2),600WT,SS,FAT,EMA,IMF,Genomics

Notes: This bull illustrates exactly where the beef industry should be heading. A deep bodied, extreme muscled bull with as much carcass and bone as you will find in a Hereford sire. Structurally sound, out of a donor female. Top 10% for all indexing values, EMA and Fats. Homozygous Polled. Stud Sire Potential. EP 100/100.

Purchaser:

Price \$:

Lot 4 RAYLEIGH NILE N052 (S)

Tattoo: N052

Rego No: AHCN052

Born: 26/05/2017

ALLENDALE WATERHOUSE D1 (PP)

DAYS CALIBRE G74 (PP)

ALLENDALE DAWN C62 (AI) (P)

Sire: **BOWEN CALIBRE K207 (AI) (ET) (PP)**

MAUNGAHINA KINGDOM BAY 070073 (IMP NZL) (P)

BOWEN HILDA F8 (AI) (P)

BOWEN HILDA A101 (AI) (P)

SOUTH BUKALONG WALLACE 2 (P)

YAVENVALE BENCHMARK B278 (P)

YAVENVALE MISS MINERVA W051 (AI) (H)

Dam: **RAYLEIGH L BELLA J77 (P)**

RILO PARK UNSHAKEABLE (AI) (ET) (P)

RAYLEIGH L UNITY G41 (P)

RAYLEIGH L TIFFANY D007 (P)

May 2019 Hereford GROUP BREEDPLAN

BW	200	400	600	MCW	Milk	SS	Cwt	EMA	Rib	RUMP	RBY%	IMF%
+7.1	+38	+62	+91	+81	+11	+3.0	+54	+4.9	+1.9	+2.7	+0.3	+1.5
72%	67%	65%	70%	60%	45%	75%	57%	49%	52%	56%	50%	49%
Selection Index Values:				S/Market: +\$115	Grass Fed Steer: +\$112			Grain Fed Steer: +\$143			EU: +\$128	

Traits Observed: BWT,200WT(x2),600WT,SS,FAT,EMA,IMF

Notes: A mobile and balanced K207 son with real presence. This bull carries some serious punch right across the top line and through to his hind quarter. With evenness of coverage and well laid in shoulders this is a very relevant young sire that would suit any operation. Strong set of EBVs. Scurred. Stud Sire Potential. EP 100/100.

Purchaser:

Price \$:

Lot 5 RAYLEIGH NICHOLAS N092 (S)

Tattoo: N092

Rego No: AHCN092

Born: 28/06/2017

CANNAWIGRA COMMANDER Z51 (S)
 MOUNTAIN VALLEY GAMBLER G14 (P)
 MOUNTAIN VALLEY B44 (P)

Sire: **MOUNTAIN VALLEY KARABAR K203 (AI) (ET) (PP)**
 STRATHLEIGH TITANIC 34 (H)
 MOUNTAIN VALLEY SHAMROCK C12 (AI) (P)
 MOUNTAIN VALLEY SHAMROCK Z72 (AI) (P)
 SOUTH BUKALONG WALLACE 2 (P)
 YAVENVALE BENCHMARK B278 (P)
 YAVENVALE MISS MINERVA W051 (AI) (H)

Dam: **RAYLEIGH L BELLA G90 (P)**
 DEBARRY TRIBULUS 2 (P)
 RAYLEIGH L TIFFANY E42 (P)
 RAYLEIGH L UABBA Z74 (P)

May 2019 Hereford GROUP BREEDPLAN													
BW	200	400	600	MCW	Milk	SS	Cwt	EMA	Rib	RUMP	RBY%	IMF%	
+5.8	+39	+67	+99	+87	+18	+2.6	+60	+3.1	+0.5	+0.9	+0.9	+0.1	
60%	64%	62%	66%	56%	45%	73%	54%	45%	49%	53%	47%	46%	
Selection Index Values:			S/Market: +\$105			Grass Fed Steer: +\$98			Grain Fed Steer: +\$108			EU: +\$113	

Traits Observed: 200WT(x2),600WT,SS,FAT,EMA,IMF

Notes: A structurally sound bull that offers extra length and weight for age. N92 is a younger bull that is clean through the front end, with well set eyes. Full brother top priced bull 2018 sale. Scurred. EP 100/100.

Purchaser: Price \$:.....

Lot 6 RAYLEIGH NEWMAN N077 (P)

Tattoo: N077

Rego No: AHCN077

Born: 08/06/2017

CANNAWIGRA COMMANDER Z51 (S)
 MOUNTAIN VALLEY GAMBLER G14 (P)
 MOUNTAIN VALLEY B44 (P)

Sire: **MOUNTAIN VALLEY KARABAR K203 (AI) (ET) (PP)**
 STRATHLEIGH TITANIC 34 (H)
 MOUNTAIN VALLEY SHAMROCK C12 (AI) (P)
 MOUNTAIN VALLEY SHAMROCK Z72 (AI) (P)
 KARINA CHERRY Z8 (PP)
 TYCOLAH GOLD RUSH (S)
 TYCOLAH COUNTESS Z04 (P)

Dam: **RAYLEIGH O GOLDIE G23 (AI) (P)**
 DEBARRY TRIBULUS 2 (P)
 RAYLEIGH O TIFFANY C80 (P)
 TOOLANGATTA U101 THERESA W408 (AI) (P)

May 2019 Hereford GROUP BREEDPLAN													
BW	200	400	600	MCW	Milk	SS	Cwt	EMA	Rib	RUMP	RBY%	IMF%	
+7.2	+43	+72	+105	+101	+17	+1.6	+63	+3.0	-0.6	-0.9	+1.4	-0.2	
71%	66%	64%	68%	58%	46%	74%	55%	46%	50%	54%	48%	47%	
Selection Index Values:			S/Market: +\$82			Grass Fed Steer: +\$72			Grain Fed Steer: +\$75			EU: +\$87	

Traits Observed: BWT,200WT(x2),600WT,SS,FAT,EMA,IMF

Notes: A long bodied Karabar son with a lot of power. Structurally sound with goggle eyes. Good bone and smooth shoulders. Polled. EP 100/100.

Purchaser: Price \$:.....

Lot 7 RAYLEIGH NEGOTIATOR N124 (P)

Tattoo: N124

Rego No: AHCN124

Born: 08/08/2017

CANNAWIGRA COMMANDER Z51 (S)
 MOUNTAIN VALLEY GAMBLER G14 (P)
 MOUNTAIN VALLEY B44 (P)
 Sire: **MOUNTAIN VALLEY KARABAR K203 (AI) (ET) (PP)**
 STRATHLEIGH TITANIC 34 (H)
 MOUNTAIN VALLEY SHAMROCK C12 (AI) (P)
 MOUNTAIN VALLEY SHAMROCK Z72 (AI) (P)
 SOUTH BUKALONG WALLACE 2 (P)
 YAVENVALE BENCHMARK B278 (P)
 YAVENVALE MISS MINERVA W051 (AI) (H)

Dam: **RAYLEIGH L BELLA G71 (P)**
 HEATHERDALE BONANZA Z48 (AI) (P)
 RAYLEIGH L BONNIE E1 (AI) (P)
 RAYLEIGH L TIFFANY C7 (P)

May 2019 Hereford GROUP BREEDPLAN												
BW	200	400	600	MCW	Milk	SS	Cwt	EMA	Rib	RUMP	RBY%	IMF%
+7.8	+46	+76	+111	+93	+15	+2.2	+65	+3.5	+1.2	+2.1	+0.5	+0.6
69%	64%	57%	58%	49%	44%	55%	46%	39%	43%	46%	40%	42%
Selection Index Values:		S/Market: +\$108		Grass Fed Steer: +\$101			Grain Fed Steer: +\$117			EU: +\$114		

Traits Observed: BWT,200WT(x2)

Notes: A lot younger bull showing great growth and weight for age. Good temperament. Terrific length with strength of spine and depth of body. A later maturing type. Polled. EP 100/95.

Purchaser: Price \$:.....

Lot 8 RAYLEIGH NASER N007 (P)

Tattoo: N007

Rego No: AHCN007

Born: 01/05/2017

REMITALL KEYNOTE 20X (IMP CAN) (P)
 REMITALL BOOMER 46B (IMP CAN) (P)
 REMITALL SALLYS LASS ET 120X (P)
 Sire: **RAYLEIGH HERCULES H24 (AI) (PP)**
 DAVENGER UPSTART (AI) (P)
 RAYLEIGH M UABBA Y47 (TW) (P)
 RAYLEIGH LADY 7 Q112 (P)
 BOWEN TORNADO Z260 (AI) (ET) (PP)
 RILO PARK UNSHAKEABLE (AI) (ET) (P)
 BOWEN MATCHLESS L140 (AI) (P)

Dam: **RAYLEIGH L UNITY G89 (P)**
 LJS 23C DEVIATE U101 (AI) (ET) (P)
 RAYLEIGH L EVA A2 (AI) (P)
 RAYLEIGH SALLY 31 U23 (P)

May 2019 Hereford GROUP BREEDPLAN												
BW	200	400	600	MCW	Milk	SS	Cwt	EMA	Rib	RUMP	RBY%	IMF%
+6.6	+33	+52	+75	+87	+8	+1.6	+41	+3.4	-0.3	-0.9	+1.0	+0.5
61%	65%	64%	67%	58%	46%	74%	56%	48%	50%	54%	48%	48%
Selection Index Values:		S/Market: +\$67		Grass Fed Steer: +\$61			Grain Fed Steer: +\$72			EU: +\$77		

Traits Observed: 200WT(x2),600WT,SS,FAT,EMA,IMF

Notes: A later maturing bull with great length of body and smoothness through the shoulders. Strong topline, structurally sound with evenness of coverage. Polled. EP 100/100.

Purchaser: Price \$:.....

Lot 9 RAYLEIGH NANDIWAR N072 (PP)

Tattoo: N072

Rego No: AHCN072

Born: 05/06/2017

ALLENDALE WATERHOUSE D1 (PP)
DAYS CALIBRE G74 (PP)
ALLENDALE DAWN C62 (AI) (P)

Sire: **BOWEN CALIBRE K207 (AI) (ET) (PP)**

MAUNGAHINA KINGDOM BAY 070073 (IMP NZL) (P)
BOWEN HILDA F8 (AI) (P)
BOWEN HILDA A101 (AI) (P)
SOUTH BUKALONG WALLACE 2 (P)
YAVENVALE BENCHMARK B278 (P)
YAVENVALE MISS MINERVA W051 (AI) (H)

Dam: **RAYLEIGH I BELLA G93 (P)**

ALLENDALE POSEIDON Z110 (P)
RAYLEIGH I POSIE E19 (P)
RAYLEIGH I UABBA Y20 (P)

May 2019 Hereford GROUP BREEDPLAN												
BW	200	400	600	MCW	Milk	SS	Cwt	EMA	Rib	RUMP	RBY%	IMF%
+4.8	+34	+55	+84	+78	+15	+3.2	+54	+4.6	+1.6	+2.6	+0.2	+1.3
71%	67%	66%	69%	60%	46%	76%	56%	49%	52%	57%	50%	50%
Selection Index Values:		S/Market: +\$118			Grass Fed Steer: +\$116			Grain Fed Steer: +\$141			EU: +\$130	

Traits Observed: BWT,200WT(x2),600WT,SS,FAT,EMA,IMF,Genomics

Notes: A very mobile K207 son with extra length. Exceptional head and eyes, well laid in shoulders. Maternal brother sold at Dubbo National 2018 for \$16,000. A bull with a very strong set of EBVs. Homozygous Polled. EP 100/100.

Purchaser: Price \$:.....

Lot 10 RAYLEIGH NORSEMAN N083 (P)

Tattoo: N083

Rego No: AHCN083

Born: 14/06/2017

CANNAWIGRA COMMANDER Z51 (S)
MOUNTAIN VALLEY GAMBLER G14 (P)
MOUNTAIN VALLEY B44 (P)

Sire: **MOUNTAIN VALLEY KARABAR K203 (AI) (ET) (PP)**

STRATHLEIGH TITANIC 34 (H)
MOUNTAIN VALLEY SHAMROCK C12 (AI) (P)
MOUNTAIN VALLEY SHAMROCK Z72 (AI) (P)
CANNAWIGRA COMMANDER Z51 (S)
WHIM PARK DESTROYER D035 (AI) (S)
NOROLLE V1 NIKKI Z78 (AI) (P)

Dam: **RAYLEIGH S DESIRE G56 (P)**

ALLENDALE POSEIDON Z110 (P)
RAYLEIGH S POSIE C92 (P)
RAYLEIGH S SUZIE 17 V58 (P)

May 2019 Hereford GROUP BREEDPLAN												
BW	200	400	600	MCW	Milk	SS	Cwt	EMA	Rib	RUMP	RBY%	IMF%
+6.0	+37	+63	+89	+87	+12	+1.1	+52	+3.1	+0.1	+0.5	+0.4	+0.1
71%	67%	64%	69%	58%	46%	75%	55%	46%	49%	53%	47%	46%
Selection Index Values:		S/Market: +\$66			Grass Fed Steer: +\$58			Grain Fed Steer: +\$62			EU: +\$69	

Traits Observed: BWT,200WT(x2),600WT,SS,FAT,EMA,IMF

Notes: Another Karabar son with great length of body. Structurally sound, with good head and eye. Well balanced bull with smooth shoulders and carriage. A later maturing type. Polled. EP 100/100.

Purchaser: Price \$:.....

Lot 11 RAYLEIGH NEBRASKA N044 (P)

Tattoo: N044

Rego No: AHCN044

Born: 21/05/2017

CANNAWIGRA COMMANDER Z51 (S)
MOUNTAIN VALLEY GAMBLER G14 (P)
MOUNTAIN VALLEY B44 (P)

Sire: **MOUNTAIN VALLEY KARABAR K203 (AI) (ET) (PP)**

STRATHLEIGH TITANIC 34 (H)
MOUNTAIN VALLEY SHAMROCK C12 (AI) (P)
MOUNTAIN VALLEY SHAMROCK Z72 (AI) (P)

BOWEN TORNADO Z260 (AI) (ET) (PP)
RILO PARK UNSHAKEABLE (AI) (ET) (P)

BOWEN MATCHLESS L140 (AI) (P)

Dam: **RAYLEIGH I UNITY F70 (P)**

ALLENDALE POSEIDON Z110 (P)
RAYLEIGH I POSIE C39 (P)
RAYLEIGH SALLY 13 S78 (P)

May 2019 Hereford GROUP BREEDPLAN

BW	200	400	600	MCW	Milk	SS	Cwt	EMA	Rib	RUMP	RBY%	IMF%
+7.3	+41	+68	+99	+92	+12	+1.5	+58	+3.8	+0.2	+0.4	+0.8	+0.6
60%	64%	63%	67%	57%	45%	73%	55%	45%	49%	53%	47%	46%
Selection Index Values:		S/Market: +\$76		Grass Fed Steer: +\$69			Grain Fed Steer: +\$83			EU: +\$83		

Traits Observed: 200WT(x2),600WT,SS,FAT,EMA,IMF

Notes: An easy doing type of bull, with plenty of length and depth. A bull that finishes off well behind, is tight through the sheath and has a soft skin. Polled. EP 90/100.

Purchaser:

Price \$:.....

Lot 12 RAYLEIGH NIMROD N082 (P)

Tattoo: N082

Rego No: AHCN082

Born: 11/06/2017

ALLENDALE WATERHOUSE D1 (PP)
DAYS CALIBRE G74 (PP)
ALLENDALE DAWN C62 (AI) (P)

Sire: **BOWEN CALIBRE K207 (AI) (ET) (PP)**

MAUNGAHINA KINGDOM BAY 070073 (IMP NZL) (P)
BOWEN HILDA F8 (AI) (P)
BOWEN HILDA A101 (AI) (P)

CANNAWIGRA COMMANDER Z51 (S)
WHIM PARK DESTROYER D035 (AI) (S)
NOROLLE V1 NIKKI Z78 (AI) (P)

Dam: **RAYLEIGH J DESIRE H53 (P)**

COLUMBIAN SURVIVOR W45 (P)
RAYLEIGH J SHAMROCK Z18 (P)
RAYLEIGH FELICITY 26 N56 (P)

May 2019 Hereford GROUP BREEDPLAN

BW	200	400	600	MCW	Milk	SS	Cwt	EMA	Rib	RUMP	RBY%	IMF%
+5.7	+31	+50	+73	+76	+10	+1.9	+45	+4.3	+1.0	+1.4	+0.0	+0.9
71%	67%	65%	69%	59%	45%	75%	56%	47%	50%	55%	48%	48%
Selection Index Values:		S/Market: +\$79		Grass Fed Steer: +\$76			Grain Fed Steer: +\$92			EU: +\$88		

Traits Observed: BWT,200WT(x2),600WT,SS,FAT,EMA,IMF

Notes: A structurally sound bull with strength of spine and balance. Laid in through the shoulders and clean through the ribs. A very even bull with good coverage. Full sister lead heifer in 2019 show team. Polled. EP 100/100.

Purchaser:

Price \$:.....

Lot 13 RAYLEIGH NORWICH N097 (TW) (PP)

Tattoo: N097

Rego No: AHCN097

Born: 03/07/2017

ALLENDALE WATERHOUSE D1 (PP)
 DAYS CALIBRE G74 (PP)
 ALLENDALE DAWN C62 (AI) (P)

Sire: **DAYS ROBIN HOOD J183 (PP)**

ALLENDALE KENWORTH 2 (P)
 ALLENDALE FANCY U5 (AI) (P)
 ALLENDALE FANCY 248 (AI) (P)
 CANNAWIGRA COMMANDER Z51 (S)
 WHIM PARK DESTROYER D035 (AI) (S)
 NOROLLE V1 NIKKI Z78 (AI) (P)

Dam: **RAYLEIGH L DESIRE K87 (P)**

DAVENGER UPSTART (AI) (P)
 RAYLEIGH L UABBA Z74 (P)
 RAYLEIGH SUZIE 5 V31 (P)

May 2019 Hereford GROUP BREEDPLAN												
BW	200	400	600	MCW	Milk	SS	Cwt	EMA	Rib	RUMP	RBY%	IMF%
+5.8	+33	+51	+72	+79	+11	+2.0	+43	+4.5	+0.1	+0.6	+1.0	+0.5
65%	64%	62%	64%	55%	49%	64%	53%	46%	50%	53%	45%	50%
Selection Index Values:				S/Market: +\$90		Grass Fed Steer: +\$87		Grain Fed Steer: +\$98		EU: +\$103		

Traits Observed: BWT,200WT(x2),600WT,SS,FAT,EMA,IMF,Genomics

Notes: A more moderate bull with extreme length of body and neck extension. A very sound and mobile son of Robin Hood, with strength of spine and an impeccable temperament. Homozygous Polled. EP 100/100.

Purchaser: Price \$:.....

Lot 14 RAYLEIGH NAVIGATOR N106 (ET) (P)

Tattoo: N106

Rego No: AHCN106

Born: 16/07/2017

VALMA NAPOLEON II (AI) (P)
 VALMA PRESTIGE E60 (P)
 VALMA SILVER'S CORISANDE (AI) (P)

Sire: **TYCOLAH LYNWOOD H184 (P)**

TYCOLAH BASALT (S)
 TYCOLAH ASTERET A129 (P)
 TYCOLAH ASTERET X26 (P)
 WIRANYA BATAVIA (AI) (P)
 CANNAWIGRA S5 BATMAN X08 (AI) (ET) (S)
 MARGFRED PARK MOTH P312 (AI) (ET) (P)

Dam: **CANNAWIGRA X8 ANABEL A51 (P)**

HANOOKRA POWER (P)
 CANNAWIGRA ANABEL V108 (P)
 TERKULE ANABEL M6 (P)

May 2019 Hereford GROUP BREEDPLAN												
BW	200	400	600	MCW	Milk	SS	Cwt	EMA	Rib	RUMP	RBY%	IMF%
+5.0	+31	+50	+72	+77	+10	+1.2	+47	+4.1	-0.5	-0.9	+1.9	-0.1
68%	65%	64%	65%	56%	49%	66%	54%	47%	51%	55%	46%	51%
Selection Index Values:				S/Market: +\$65		Grass Fed Steer: +\$59		Grain Fed Steer: +\$61		EU: +\$74		

Traits Observed: 200WT(x2),600WT,SS,FAT,EMA,IMF,Genomics

Notes: An attractive outcross bull, showing a strong muscle pattern through the topline and into the hind end. Extreme thickness, good skin & hair and great temperament. Sire Brisbane grand champion, dam Adelaide grand champion. ET brother sells as lot 25. Polled. EP 100/100.

Purchaser: Price \$:.....

Lot 15 RAYLEIGH NEAPOLITON N142 (PP)

Tattoo: N142

Rego No: AHCN142

Born: 18/09/2017

KARINA CHERRY Z8 (PP)
 TYCOLAH H-BOMB (PP)
 TYCOLAH DIANA U52 (TW) (P)

Sire: **THE RANCH MARKSMAN H14 (P)**

BOWEN VINCENT V1 (S)
 THE RANCH DUCHESS A37 (AI) (P)
 THE RANCH DUCHESS X35 (P)
 HEATHERDALE BONANZA Z48 (AI) (P)
 RAYLEIGH EMERY E15 (AI) (PP)
 RAYLEIGH SALLY 27 U11 (P)

Dam: **RAYLEIGH J EMERALD H57 (P)**

DEBARRY TRIBULUS 2 (P)
 RAYLEIGH J TIFFANY D73 (P)
 RAYLEIGH J SHAMROCK Z18 (P)

May 2019 Hereford GROUP BREEDPLAN												
BW	200	400	600	MCW	Milk	SS	Cwt	EMA	Rib	RUMP	RBY%	IMF%
+5.3	+29	+51	+69	+65	+10	+1.8	+41	+3.3	+0.6	+0.8	+0.4	+0.3
69%	63%	61%	63%	54%	45%	69%	51%	42%	46%	49%	43%	46%
Selection Index Values:				S/Market: +\$81		Grass Fed Steer: +\$78		Grain Fed Steer: +\$89		EU: +\$91		

Traits Observed: BWT,200WT(x2),400WT,SS,FAT,EMA,IMF,Genomics

Notes: The youngest bull in the sale. N142 is a bull that oozes appeal, structurally sound, well balanced, with a strong muscle pattern and natural thickness. Homozygous Polled. EP 100/100.

Purchaser: Price \$:.....

Lot 16 RAYLEIGH NORBERT N110 (PP)

Tattoo: N110

Rego No: AHCN110

Born: 23/07/2017

ALLENDALE WATERHOUSE D1 (PP)
 DAYS CALIBRE G74 (PP)
 ALLENDALE DAWN C62 (AI) (P)
 Sire: **BOWEN CALIBRE K207 (AI) (ET) (PP)**
 MAUNGAHINA KINGDOM BAY 070073 (IMP NZL) (P)
 BOWEN HILDA F8 (AI) (P)
 BOWEN HILDA A101 (AI) (P)
 MERAWAH SURVIVOR T6 (AI) (P)
 COLUMBIAN SURVIVOR W45 (P)
 COLUMBIAN M20 DEW DROP P017 (P)

Dam: **RAYLEIGH J SHAMROCK Z18 (P)**

BOBANKEN FEARLESS 2 (P)
 RAYLEIGH FELICITY 26 N56 (P)
 RAYLEIGH PANDORA 63 (P)

May 2019 Hereford GROUP BREEDPLAN												
BW	200	400	600	MCW	Milk	SS	Cwt	EMA	Rib	RUMP	RBY%	IMF%
+4.6	+29	+47	+64	+73	+3	+1.0	+40	+3.9	+0.3	+0.5	+0.5	+0.5
71%	66%	64%	64%	55%	50%	70%	53%	45%	49%	53%	46%	49%
Selection Index Values:				S/Market: +\$70		Grass Fed Steer: +\$68		Grain Fed Steer: +\$75		EU: +\$79		

Traits Observed: BWT,200WT(x2),400WT,SS,FAT,EMA,IMF,Genomics

Notes: Another K207 son with that strong muscle pattern and extreme depth of body. Smooth through the shoulder with good mobility and cosmetics. The last son to be offered out of a top performing old cow. Homozygous Polled. EP 100/100.

Purchaser: Price \$:.....

Lot 17 RAYLEIGH NINJA N068 (PP)

Tattoo: N068

Rego No: AHCN068

Born: 04/06/2017

KARINA CHERRY Z8 (PP)
 TYCOLAH H-BOMB (PP)
 TYCOLAH DIANA U52 (TW) (P)

Sire: **THE RANCH MARKSMAN H14 (P)**

BOWEN VINCENT V1 (S)
 THE RANCH DUCHESS A37 (AI) (P)
 THE RANCH DUCHESS X35 (P)
 CANNAWIGRA COMMANDER Z51 (S)
 WHIM PARK DESTROYER D035 (AI) (S)
 NOROLLE V1 NIKKI Z78 (AI) (P)

Dam: **RAYLEIGH L DESIRE H34 (P)**

RAYLEIGH EXACT X5 (AI) (P)
 RAYLEIGH L XENA B31 (P)
 RAYLEIGH SALLY 6 S58 (P)

May 2019 Hereford GROUP BREEDPLAN													
BW	200	400	600	MCW	Milk	SS	Cwt	EMA	Rib	RUMP	RBY%	IMF%	
+4.6	+25	+39	+57	+50	+18	+1.6	+27	+1.4	+0.2	+0.1	+0.0	+0.3	
70%	65%	63%	67%	57%	48%	70%	53%	44%	48%	51%	45%	47%	
Selection Index Values:				S/Market: +\$54		Grass Fed Steer: +\$50		Grain Fed Steer: +\$60		EU: +\$62			

Traits Observed: BWT,200WT(x2),600WT,SS,FAT,EMA,IMF,Genomics

Notes: An extremely mobile bull. With smooth shoulders, length and soundness. Good hooded eyes. Could suit heifers. Homozygous Polled. EP 100/100.

Purchaser: Price \$:.....

Lot 18 RAYLEIGH NELSON N008 (PP)

Tattoo: N008

Rego No: AHCN008

Born: 03/05/2017

ALLENDALE WATERHOUSE D1 (PP)
 DAYS CALIBRE G74 (PP)
 ALLENDALE DAWN C62 (AI) (P)

Sire: **DAYS ROBIN HOOD J183 (PP)**

ALLENDALE KENWORTH 2 (P)
 ALLENDALE FANCY U5 (AI) (P)
 ALLENDALE FANCY 248 (AI) (P)
 HARVIE LADIES MAN 4L (IMP CAN) (PP)
 RAYLEIGH ALBERTA A4 (AI) (P)
 RAYLEIGH S. EVA X3 (AI) (P)

Dam: **RAYLEIGH I ALYSIA E68 (P)**

ALLENDALE POSEIDON Z110 (P)
 RAYLEIGH I POSIE C13 (P)
 RAYLEIGH I UABBA Y20 (P)

May 2019 Hereford GROUP BREEDPLAN													
BW	200	400	600	MCW	Milk	SS	Cwt	EMA	Rib	RUMP	RBY%	IMF%	
+3.3	+29	+36	+55	+45	+13	+1.6	+37	+3.4	+2.6	+4.5	-1.0	+1.3	
63%	64%	62%	65%	57%	51%	69%	55%	47%	51%	54%	48%	51%	
Selection Index Values:				S/Market: +\$92		Grass Fed Steer: +\$94		Grain Fed Steer: +\$114		EU: +\$101			

Traits Observed: 200WT(x2),600WT,SS,FAT,EMA,IMF,Genomics

Notes: An easy doing bull, with strength of spine and evenness of coverage. Specialist heifer bull, with a strong set of EBVs. Homozygous Polled. EP 100/100.

Purchaser: Price \$:.....



**RUMEVITE
BEEF FINISHER
PELLET**

*Pelleted grain ration for lot feeding
cattle weighing greater than 300kg
live weight.*



**RUMEVITE
FEEDLOT MINERALS
CONCENTRATE**

*A mineral and vitamin concentrate for
mixing with crushed grains, vegetable
protein source and roughage to provide
a balanced ration for lot feeding cattle.*

NARRABRI FARM CENTRE

Eleanor Street, Narrabri

Phone: 6792 2352

www.narrabrifarm.com.au



*Carrying a comprehensive range of Ridley
Agriproducts stockfeeds and supplements.*



**RUMEVITE
BEEF WEANER
PELLET**

*A pelleted grain ration for
supplementing beef weaners or
lot feeding cattle weighing
between 120-300kg live weight.*



**RUMEVITE
FEEDLOT 80
CONCENTRATE**

*A protein, mineral and vitamin
concentrate designed for mixing with
crushed grain and roughage to provide
a balanced ration for lot feeding cattle.*

Introducing...

Ruminant Paddock Nuts

Cost effective, value for money nut



High energy, high protein (14%) - high quality nut designed specifically for maintaining or improving stock condition.

Formulated for optimal growth rates.

Very safe to feed – reduces issues with acidosis, laminitis and bloat.

Very high, balanced vitamin and mineral profile – designed with fertility in mind.

Ideal product to feed stock during periods of decline in pasture quality or quantity.



Also available:

- Stockfeed
- Dry Lick Supplements
- Protein Meals and Concentrates
- Bulk, bulk bag or bagged

Nutramix is a proud supporter of
Rayleigh Poll Herefords



ENQUIRIES & ORDERS
07 4667 0000



Like us to receive news and specials

Email admin.warwick@nutramix.com.au
Browse our full range www.nutramix.com.au



Lot 2



Lot 4



Lot 1



Lot 3



Lot 6



Lot 8



Lot 5



Lot 7



Lot 10



Lot 12



Lot 9



Lot 11



Lot 14



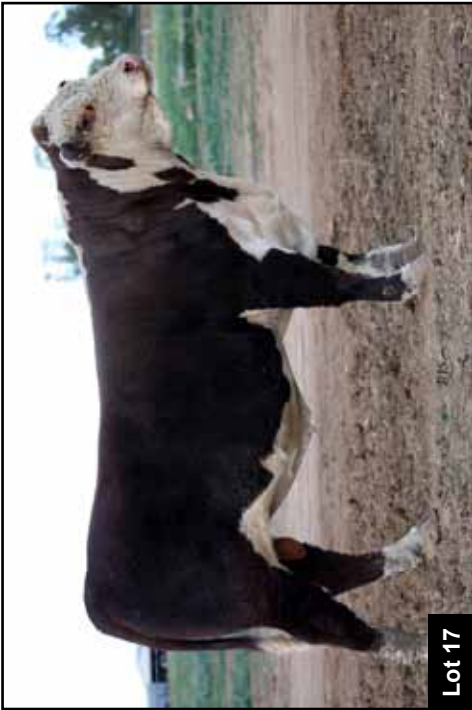
Lot 16



Lot 13



Lot 15







SPECIALISING IN

✦ **QUALITY** ✦ **LOW COST**
FEEDS FOR HORSES, SHEEP & CATTLE



SOME OF OUR PRODUCTS INCLUDE:

Bypass Drylick + Rumensin

A supplement designed to feed the rumen bugs and stimulate feed intake for sheep and cattle on a low quality roughage diet. Plenty of roughage is essential.

Total Ration

A high protein, high energy complete feed ration for finishing domestic type, trade weight cattle and sheep.

- *Promotes good weight gain
- *Reduces fat deposition
- *Reduces 'feedlot entry' weight loss

Bypass Feedlot concentrate

A Supplement to add to your own grain. Provides macro and micro ingredients including Urea.

For feed lotting sheep & cattle.

Use 50Kg of Bypass Feedlot Concentrate for each tonne of finished feed.

PRODUCT DOES NOT CONTAIN RESTRICTED ANIMAL MATERIAL



ARE YOU FEEDLOTING ?

DO YOUR STOCK NEED
FINISHING ? BEFORE SALE

AFTER A SUPPLEMENT TO
ADD TO YOUR OWN GRAIN ?

WEANING CALVES ?

PASTURE CONDITIONS ?

*SERVERLY DRY *LUSH GREEN
*OF IN BETWEEN

**WE HAVE THE PRODUCT
FOR YOUR STOCK**

**BYPASS STOCKFEEDS
&
SWEETBULK HORSEFEEDS**

ABN: 83077109767

PHONE: 02 68 431 933

EMAIL: glenda@sweetbulk.com





**THOUSANDS OF FARMERS.
ONE SPECIALIST BROKER.**



**For all your farm & crop insurance
requirements call us:**

Tamworth 02 5794 7108

or visit us at: www.agririsk.com.au



Lot 19 RAYLEIGH NIGEL N079 (PP)

Tattoo: N079

Rego No: AHCN079

Born: 09/06/2017

ALLENDALE WATERHOUSE D1 (PP)
DAYS CALIBRE G74 (PP)
ALLENDALE DAWN C62 (AI) (P)

Sire: **BOWEN CALIBRE K207 (AI) (ET) (PP)**

MAUNGAHINA KINGDOM BAY 070073 (IMP NZL) (P)
BOWEN HILDA F8 (AI) (P)
BOWEN HILDA A101 (AI) (P)
CANNAWIGRA COMMANDER Z51 (S)
WHIM PARK DESTROYER D035 (AI) (S)
NOROLLE V1 NIKKI Z78 (AI) (P)

Dam: **RAYLEIGH S DESIRE K50 (P)**

RAYLEIGH ALBERTA A4 (AI) (P)
RAYLEIGH L ALYSIA F72 (P)
RAYLEIGH L TIFFANY D39 (P)

May 2019 Hereford GROUP BREEDPLAN												
BW	200	400	600	MCW	Milk	SS	Cwt	EMA	Rib	RUMP	RBY%	IMF%
+5.7	+30	+49	+75	+80	+10	+2.8	+45	+4.5	+1.6	+2.3	-0.6	+1.5
64%	65%	64%	68%	59%	45%	74%	56%	48%	52%	56%	50%	49%
Selection Index Values:				S/Market: +\$93		Grass Fed Steer: +\$91		Grain Fed Steer: +\$117		EU: +\$104		

Traits Observed: 200WT(x2),600WT,SS,FAT,EMA,IMF,Genomics

Notes: A very industry relevant young sire. This bull is well put together and heavy fleshed, with a load of natural thickness.

Would produce functional females, as well as top end steers. A very strong set of EBVs. Top sire potential. Homozygous polled. EP 100/100.

Purchaser: Price \$:.....

Lot 20 RAYLEIGH NICKNACK N074 (S)

Tattoo: N074

Rego No: AHCN074

Born: 06/06/2017

ALLENDALE WATERHOUSE D1 (PP)
DAYS CALIBRE G74 (PP)
ALLENDALE DAWN C62 (AI) (P)

Sire: **BOWEN CALIBRE K207 (AI) (ET) (PP)**

MAUNGAHINA KINGDOM BAY 070073 (IMP NZL) (P)
BOWEN HILDA F8 (AI) (P)
BOWEN HILDA A101 (AI) (P)
CANNAWIGRA COMMANDER Z51 (S)
WHIM PARK DESTROYER D035 (AI) (S)
NOROLLE V1 NIKKI Z78 (AI) (P)

Dam: **RAYLEIGH L DESIRE J65 (TW) (P)**

RILO PARK UNSHAKEABLE (AI) (ET) (P)
RAYLEIGH L UNITY F33 (P)
RAYLEIGH L UABBA A90 (P)

May 2019 Hereford GROUP BREEDPLAN												
BW	200	400	600	MCW	Milk	SS	Cwt	EMA	Rib	RUMP	RBY%	IMF%
+6.8	+36	+64	+96	+104	+10	+2.7	+56	+4.6	-0.2	-0.7	+1.3	+0.9
71%	66%	64%	68%	58%	44%	75%	55%	47%	50%	54%	48%	47%
Selection Index Values:				S/Market: +\$98		Grass Fed Steer: +\$92		Grain Fed Steer: +\$112		EU: +\$111		

Traits Observed: BWT,200WT(x2),600WT,SS,FAT,EMA,IMF

Notes: Another industry relevant K207 son. A bull with natural thickness, muscling and strength of spine. Structurally sound, with well set eyes and a tight sheath. Scurred. EP 100/100.

Purchaser: Price \$:.....

Lot 21 RAYLEIGH NIFTY N004 (AI) (S)

Tattoo: N004

Rego No: AHCN004

Born: 09/03/2017

KOANUI ROCKET Q334 (P)
KOANUI ROCKET 0219 (IMP NZL) (P)
KOANUI ANGEL R187 (P)

Sire: **BOWEN EXTREMIST E96 (AI) (P)**

BOWEN URALBA U160 (P)
BOWEN ROLLINA B385 (P)
BOWEN ROLLINA Y73 (P)
SOUTH BUKALONG WALLACE 2 (P)
GLENTREVOR WALLACE H427 (AI) (PP)
GLENTREVOR MARITANA F240 (P)

Dam: **COURALLIE PRUDENCE L503 (AI) (P)**

COURALLIE ROCKET D074 (AI) (S)
COURALLIE D074 PRUDENCE H116 (TW) (H#)
COURALLIE U244 PRUDENCE Y314 (H)

May 2019 Hereford GROUP BREEDPLAN												
BW	200	400	600	MCW	Milk	SS	Cwt	EMA	Rib	RUMP	RBY%	IMF%
+0.7	+30	+56	+82	+69	+16	+3.0	+62	+3.9	+0.7	+1.3	+1.4	+0.5
63%	62%	62%	62%	56%	53%	60%	54%	47%	52%	55%	49%	53%
Selection Index Values:				S/Market: +\$118		Grass Fed Steer: +\$116		Grain Fed Steer: +\$126		EU: +\$127		

Traits Observed: 200WT,400WT,600WT,SS,FAT,EMA,IMF

Notes: A gentle natured outcross sire. Good eye setting, with loads of natural thickness and muscling. Check out this curve bending set of EBVs! With a birth weight in the top 5% this bull would be a great heifer bull option. A bull that will do better out of the mob. Scurred. EP 100/100.

Purchaser:

Price \$:

Lot 22 RAYLEIGH NIMBLE N085 (P)

Tattoo: N085

Rego No: AHCN085

Born: 17/06/2017

ALLENDALE WATERHOUSE D1 (PP)
DAYS CALIBRE G74 (PP)
ALLENDALE DAWN C62 (AI) (P)

Sire: **DAYS ROBIN HOOD J183 (PP)**

ALLENDALE KENWORTH 2 (P)
ALLENDALE FANCY U5 (AI) (P)
ALLENDALE FANCY 248 (AI) (P)
ALLENDALE OVERTON (P)
ALLENDALE POSEIDON Z110 (P)
ALLENDALE FANCY T24 (P)

Dam: **RAYLEIGH S POSIE D69 (P)**

EBBX CALGARY Y39 (AI) (ET) (P)
RAYLEIGH S CAROL B4 (P)
RAYLEIGH AMOROUS 9 U39 (P)

May 2019 Hereford GROUP BREEDPLAN												
BW	200	400	600	MCW	Milk	SS	Cwt	EMA	Rib	RUMP	RBY%	IMF%
+4.9	+30	+51	+74	+81	+10	+1.7	+43	+4.5	+0.4	+1.1	+0.9	+0.6
72%	68%	67%	71%	63%	53%	76%	59%	50%	53%	57%	52%	51%
Selection Index Values:				S/Market: +\$88		Grass Fed Steer: +\$85		Grain Fed Steer: +\$97		EU: +\$99		

Traits Observed: BWT,200WT(x2),600WT,SS,FAT,EMA,IMF

Notes: A clean coated Robin Hood son, with moderate bone and loads of length. This bull has a balanced set of EBVS and would suit heifers. Out of a great old cow. Polled. EP 100/100.

Purchaser:

Price \$:

Lot 23 RAYLEIGH NARRAN N043 (S)

Tattoo: N043

Rego No: AHCN043

Born: 21/08/2017

CANNAWIGRA COMMANDER Z51 (S)

MOUNTAIN VALLEY GAMBLER G14 (P)

MOUNTAIN VALLEY B44 (P)

Sire: MOUNTAIN VALLEY KARABAR K203 (AI) (ET) (PP)

STRATHLEIGH TITANIC 34 (H)

MOUNTAIN VALLEY SHAMROCK C12 (AI) (P)

MOUNTAIN VALLEY SHAMROCK Z72 (AI) (P)

SOUTH BUKALONG WALLACE 2 (P)

YAVENVALE BENCHMARK B278 (P)

YAVENVALE MISS MINERVA W051 (AI) (H)

Dam: RAYLEIGH C BELLA H98 (P)

COLUMBIAN SURVIVOR W45 (P)

RAYLEIGH C SHAMROCK A32 (P)

RAYLEIGH C IRIS W2 (P)

May 2019 Hereford GROUP BREEDPLAN

BW	200	400	600	MCW	Milk	SS	Cwt	EMA	Rib	RUMP	RBY%	IMF%	
+5.5	+40	+70	+101	+86	+15	+2.4	+66	+4.3	+0.8	+1.5	+1.0	+0.4	
70%	63%	61%	64%	55%	44%	65%	51%	42%	45%	48%	43%	42%	
Selection Index Values:				S/Market: +\$114			Grass Fed Steer: +\$108			Grain Fed Steer: +\$122		EU: +\$122	

Traits Observed: BWT,200WT(x2),600WT,SS,FAT,EMA,IMF

Notes: A moderate framed, industry relevant young sire, with natural thickness and evenness of coverage. Smooth shoulders, tight sheath. Maternal brother top priced bull 2017 bull sale. Scurred. EP 100/100.

Purchaser: Price \$:.....

Lot 24 RAYLEIGH NED N064 (P)

Tattoo: N064

Rego No: AHCN064

Born: 31/05/2017

CANNAWIGRA COMMANDER Z51 (S)

MOUNTAIN VALLEY GAMBLER G14 (P)

MOUNTAIN VALLEY B44 (P)

Sire: MOUNTAIN VALLEY KARABAR K203 (AI) (ET) (PP)

STRATHLEIGH TITANIC 34 (H)

MOUNTAIN VALLEY SHAMROCK C12 (AI) (P)

MOUNTAIN VALLEY SHAMROCK Z72 (AI) (P)

SOUTH BUKALONG WALLACE 2 (P)

YAVENVALE BENCHMARK B278 (P)

YAVENVALE MISS MINERVA W051 (AI) (H)

Dam: RAYLEIGH L BELLA H86 (P)

DEBARRY TRIBULUS 2 (P)

RAYLEIGH L TIFFANY F15 (P)

RAYLEIGH L EMMA X76 (P)

May 2019 Hereford GROUP BREEDPLAN

BW	200	400	600	MCW	Milk	SS	Cwt	EMA	Rib	RUMP	RBY%	IMF%	
+6.0	+39	+65	+94	+80	+15	+2.5	+57	+3.0	+0.9	+1.6	+0.4	+0.3	
69%	61%	57%	58%	50%	43%	56%	47%	40%	43%	46%	40%	42%	
Selection Index Values:				S/Market: +\$99			Grass Fed Steer: +\$93			Grain Fed Steer: +\$105		EU: +\$106	

Traits Observed: BWT,200WT(x2),600WT,SS,FAT,EMA,IMF

Notes: Another moderate framed, panda eyes Karabar son. This bull is easy doing, with a good topline and muscle expression. Polled. EP 100/100.

Purchaser: Price \$:.....

Lot 25 RAYLEIGH NERO N100 (ET) (P)

Tattoo: N100

Rego No: AHCN100

Born: 08/07/2017

VALMA NAPOLEON II (AI) (P)

VALMA PRESTIGE E60 (P)

VALMA SILVER'S CORISANDE (AI) (P)

Sire: TYCOLAH LYNWOOD H184 (P)

TYCOLAH BASALT (S)

TYCOLAH ASTERET A129 (P)

TYCOLAH ASTERET X26 (P)

WIRANYA BATAVIA (AI) (P)

CANNAWIGRA S5 BATMAN X08 (AI) (ET) (S)

MARGFRED PARK MOTH P312 (AI) (ET) (P)

Dam: CANNAWIGRA X8 ANABEL A51 (P)

HANOOKRA POWER (P)

CANNAWIGRA ANABEL V108 (P)

TERKULE ANABEL M6 (P)

May 2019 Hereford GROUP BREEDPLAN

BW	200	400	600	MCW	Milk	SS	Cwt	EMA	Rib	RUMP	RBY%	IMF%
+5.7	+33	+53	+76	+81	+10	+1.3	+47	+4.0	-0.8	-1.5	+2.0	-0.3
68%	63%	60%	60%	53%	47%	59%	50%	44%	48%	51%	44%	48%
Selection Index Values:				S/Market: +\$66		Grass Fed Steer: +\$60		Grain Fed Steer: +\$60		EU: +\$76		

Traits Observed: BWT,200WT(x2),600WT,SS,FAT,EMA,IMF

Notes: A well put together ET bull who has come from behind but keeps developing. This bull has length of body, strength of spine and natural thickness. An outcross pedigree. Full brother sells as lot 14. Polled. EP 100/100.

Purchaser: Price \$:.....

Lot 26 RAYLEIGH NOAH N076 (P)

Tattoo: N076

Rego No: AHCN076

Born: 08/06/2017

ALLENDALE WATERHOUSE D1 (PP)

DAYS CALIBRE G74 (PP)

ALLENDALE DAWN C62 (AI) (P)

Sire: DAYS ROBIN HOOD J183 (PP)

ALLENDALE KENWORTH 2 (P)

ALLENDALE FANCY U5 (AI) (P)

ALLENDALE FANCY 248 (AI) (P)

HARVIE LADIES MAN 4L (IMP CAN) (PP)

RAYLEIGH ALBERTA A4 (AI) (P)

RAYLEIGH S. EVA X3 (AI) (P)

Dam: RAYLEIGH I ALYSIA E65 (P)

YALGOO AUTHOR L69 (AI) (S)

RAYLEIGH AMOROUS 14 U52 (P)

RAYLEIGH HALEY 45 N52 (P)

May 2019 Hereford GROUP BREEDPLAN

BW	200	400	600	MCW	Milk	SS	Cwt	EMA	Rib	RUMP	RBY%	IMF%
+1.5	+23	+35	+49	+51	+11	+1.9	+35	+4.4	+1.4	+2.7	+0.1	+1.0
71%	67%	66%	70%	62%	50%	76%	58%	49%	53%	57%	51%	51%
Selection Index Values:				S/Market: +\$89		Grass Fed Steer: +\$92		Grain Fed Steer: +\$106		EU: +\$101		

Traits Observed: BWT,200WT(x2),600WT,SS,FAT,EMA,IMF

Notes: A mobile young sire with strong muscle pattern and evenness of coverage. Structurally sound. A specialist heifer bull, with a low birthweight and strong set of carcass EBVs. Polled. EP 100/100.

Purchaser: Price \$:.....

agri**business**

more
than
money



Dedicated to
**THE AGRICULTURAL
INDUSTRY IN
NORTH WEST NSW**

With more than 155 years of experience looking after primary producers and secondary processors, we have the insights, expertise and the local knowledge to help you bring your plans to life – at every stage of the journey.

Talk to your NAB Agribusiness banker today or call:

Samantha Hegarty

02 6790 6870

Maddie Cunningham

02 6790 6866

James Pitman

02 6790 6868

Lot 27 RAYLEIGH NUDGEY N134 (P)

Tattoo: N134

Rego No: AHCN134

Born: 25/08/2017

KARINA CHERRY Z8 (PP)
 TYCOLAH H-BOMB (PP)
 TYCOLAH DIANA U52 (TW) (P)

Sire: **THE RANCH MARKSMAN H14 (P)**

BOWEN VINCENT V1 (S)
 THE RANCH DUCHESS A37 (AI) (P)
 THE RANCH DUCHESS X35 (P)
 HARVIE LADIES MAN 4L (IMP CAN) (PP)
 RAYLEIGH ALBERTA A4 (AI) (P)
 RAYLEIGH S. EVA X3 (AI) (P)

Dam: **RAYLEIGH S ALYSIA D50 (P)**

RAYLEIGH EXACT X5 (AI) (P)
 RAYLEIGH M XENA Z10 (P)
 RAYLEIGH M. KYLIE X10 (P)

May 2019 Hereford GROUP BREEDPLAN												
BW	200	400	600	MCW	Milk	SS	Cwt	EMA	Rib	RUMP	RBY%	IMF%
+4.0	+27	+40	+61	+61	+16	+1.3	+35	+2.0	-0.1	-0.4	+0.7	+0.1
69%	65%	64%	64%	56%	48%	72%	53%	45%	50%	54%	47%	48%
Selection Index Values:				S/Market: +\$68		Grass Fed Steer: +\$64		Grain Fed Steer: +\$70		EU: +\$77		

Traits Observed: BWT,200WT(x2),400WT,SS,FAT,EMA,IMF

Notes: A well put together, spring drop bull. Structurally sound, with good length of body and well set eyes. Out of a good old cow, this bull should continue to develop. Polled. EP 100/100.

Purchaser: Price \$:

Lot 28 RAYLEIGH NIAGRA N108 (P)

Tattoo: N108

Rego No: AHCN108

Born: 21/07/2017

KARINA CHERRY Z8 (PP)
 TYCOLAH H-BOMB (PP)
 TYCOLAH DIANA U52 (TW) (P)

Sire: **THE RANCH MARKSMAN H14 (P)**

BOWEN VINCENT V1 (S)
 THE RANCH DUCHESS A37 (AI) (P)
 THE RANCH DUCHESS X35 (P)
 CANNAWIGRA COMMANDER Z51 (S)
 WHIM PARK DESTROYER D035 (AI) (S)
 NOROLLE V1 NIKKI Z78 (AI) (P)

Dam: **RAYLEIGH L DESIRE H43 (P)**

DAVENGER UPSTART (AI) (P)
 RAYLEIGH L EMMA X76 (P)
 RAYLEIGH SCARLET 17 T12 (P)

May 2019 Hereford GROUP BREEDPLAN												
BW	200	400	600	MCW	Milk	SS	Cwt	EMA	Rib	RUMP	RBY%	IMF%
+6.4	+28	+43	+60	+63	+16	+0.9	+26	+1.5	-0.2	-0.6	+0.3	-0.1
70%	64%	62%	66%	57%	46%	70%	53%	43%	47%	50%	45%	45%
Selection Index Values:				S/Market: +\$42		Grass Fed Steer: +\$36		Grain Fed Steer: +\$39		EU: +\$49		

Traits Observed: BWT,200WT(x2),600WT,SS,FAT,EMA,IMF

Notes: Another younger bull with good bone, structure and natural thickness. Great skin and hair. A bull that should continue to develop. Polled. EP 100/100.

Purchaser: Price \$:

Lot 29 RAYLEIGH NEWSTART N138 (P)

Tattoo: N138

Rego No: AHCN138

Born: 04/09/2017

KARINA CHERRY Z8 (PP)

TYCOLAH H-BOMB (PP)

TYCOLAH DIANA U52 (TW) (P)

Sire: **THE RANCH MARKSMAN H14 (P)**

BOWEN VINCENT V1 (S)

THE RANCH DUCHESS A37 (AI) (P)

THE RANCH DUCHESS X35 (P)

CANNAWIGRA COMMANDER Z51 (S)

WHIM PARK DESTROYER D035 (AI) (S)

NOROLLE V1 NIKKI Z78 (AI) (P)

Dam: **RAYLEIGH L DESIRE K70 (P)**

LJS 23C DEVIATE U101 (AI) (ET) (P)

RAYLEIGH L EVA A63 (AI) (P)

RAYLEIGH L UABBA Y4 (P)

May 2019 Hereford GROUP BREEDPLAN

BW	200	400	600	MCW	Milk	SS	Cwt	EMA	Rib	RUMP	RBY%	IMF%
+5.3	+27	+42	+62	+67	+15	+0.1	+32	+1.9	-0.9	-1.6	+0.9	-0.1
70%	65%	63%	63%	54%	47%	73%	52%	45%	48%	52%	46%	47%
Selection Index Values:			S/Market: +\$45			Grass Fed Steer: +\$39			Grain Fed Steer: +\$41		EU: +\$52	

Traits Observed: BWT,200WT(x2),400WT,SS,FAT,EMA,IMF

Notes: The second youngest bull in the sale that has loads of potential. Structurally sound, strong topline, good head and eye. Polled. EP 100/100.

Purchaser: Price \$:.....

Lot 30 RAYLEIGH NORMAN N012 (P)

Tattoo: N012

Rego No: AHCN012

Born: 06/05/2017

ALLENDALE WATERHOUSE D1 (PP)

DAYS CALIBRE G74 (PP)

ALLENDALE DAWN C62 (AI) (P)

Sire: **DAYS ROBIN HOOD J183 (PP)**

ALLENDALE KENWORTH 2 (P)

ALLENDALE FANCY U5 (AI) (P)

ALLENDALE FANCY 248 (AI) (P)

ALLENDALE ANZAC E114 (PP)

INJEMIRA ANZAC H003 (P)

INJEMIRA HAPPY DAY C097 (P)

Dam: **RAYLEIGH L ANASTASIA L5 (P)**

WHIM PARK DESTROYER D035 (AI) (S)

RAYLEIGH L DESIRE H75 (P)

RAYLEIGH L BONNIE E8 (AI) (P)

May 2019 Hereford GROUP BREEDPLAN

BW	200	400	600	MCW	Milk	SS	Cwt	EMA	Rib	RUMP	RBY%	IMF%
+3.1	+25	+40	+55	+58	+8	+1.6	+36	+4.4	+0.7	+1.4	+0.4	+0.9
61%	63%	59%	60%	54%	48%	74%	53%	48%	51%	55%	50%	50%
Selection Index Values:			S/Market: +\$80			Grass Fed Steer: +\$80			Grain Fed Steer: +\$96		EU: +\$92	

Traits Observed: 200WT(x2),SS,FAT,EMA,IMF

Notes: A heifers first calf. This fellow is an easy doing, mobile bull, with great muscle expression. Structurally sound with a good tight sheath. Would suit heifers. Polled. EP 100/100.

Purchaser: Price \$:.....



Helping your herd to
perform at it's best...
Our vets are accredited to
BULLCHECK (VBBSE)
and
PREGCHECK (NCPD tags)

Proudly providing veterinary services to
Rayleigh Poll Herefords

HEIFER LOTS

Lot 31 RAYLEIGH I CHANEL P6 (P)

Tattoo: P006

Rego No: AHCP006

Born: 03/04/2018

ALLEDALE WATERHOUSE D1 (PP)

DAYS CALIBRE G74 (PP)

ALLEDALE DAWN C62 (AI) (P)

Sire: **BOWEN CALIBRE K207 (AI) (ET) (PP)**

MAUNGAHINA KINGDOM BAY 070073 (IMP NZL) (P)

BOWEN HILDA F8 (AI) (P)

BOWEN HILDA A101 (AI) (P)

CANNAWIGRA COMMANDER Z51 (S)

WHIM PARK DESTROYER D035 (AI) (S)

NOROLLE V1 NIKKI Z78 (AI) (P)

Dam: **RAYLEIGH I DESIRE H92 (P)**

ALLEDALE POSEIDON Z110 (P)

RAYLEIGH I POSIE E19 (P)

RAYLEIGH I UABBA Y20 (P)

May 2019 Hereford GROUP BREEDPLAN

BW	200	400	600	MCW	Milk	SS	Cwt	EMA	Rib	RUMP	RBY%	IMF%
+7.5	+37	+59	+89	+97	+10	+2.2	+51	+4.2	+0.1	-0.1	+0.8	+0.6
60%	62%	58%	59%	51%	45%	58%	50%	43%	46%	50%	43%	46%
Selection Index Values:		S/Market: +\$79		Grass Fed Steer: +\$72			Grain Fed Steer: +\$85			EU: +\$88		

Traits Observed: 200WT

Notes: A very well grown, long bodied heifer with terrific weight for age. P006 is a mobile female, with strength of spine and softness. Polled. EP 100/100.

Purchaser:

Price \$:

Lot 32 RAYLEIGH L CHANEL P20 (P)

Tattoo: P020

Rego No: AHCP020

Born: 14/04/2018

ALLEDALE WATERHOUSE D1 (PP)

DAYS CALIBRE G74 (PP)

ALLEDALE DAWN C62 (AI) (P)

Sire: **BOWEN CALIBRE K207 (AI) (ET) (PP)**

MAUNGAHINA KINGDOM BAY 070073 (IMP NZL) (P)

BOWEN HILDA F8 (AI) (P)

BOWEN HILDA A101 (AI) (P)

CANNAWIGRA COMMANDER Z51 (S)

WHIM PARK DESTROYER D035 (AI) (S)

NOROLLE V1 NIKKI Z78 (AI) (P)

Dam: **RAYLEIGH L DESIRE J33 (P)**

RAYLEIGH EXACT X5 (AI) (P)

RAYLEIGH L XENA B28 (P)

RAYLEIGH SUZIE 7 V38 (P)

May 2019 Hereford GROUP BREEDPLAN

BW	200	400	600	MCW	Milk	SS	Cwt	EMA	Rib	RUMP	RBY%	IMF%
+6.4	+31	+50	+73	+81	+7	+2.3	+40	+3.8	+0.3	+0.3	+0.3	+0.7
60%	62%	58%	60%	52%	44%	57%	50%	43%	47%	51%	44%	47%
Selection Index Values:		S/Market: +\$66		Grass Fed Steer: +\$62			Grain Fed Steer: +\$76			EU: +\$76		

Traits Observed: 200WT

Notes: A very feminine heifer, with great balance and structure. P020 is a mobile female with some extra length. Polled. EP 100/100.

Purchaser:

Price \$:

Lot 33 RAYLEIGH L CHANEL P45 (P)

Tattoo: P045

Rego No: AHCP045

Born: 03/05/2018

ALLENDALE WATERHOUSE D1 (PP)
 DAYS CALIBRE G74 (PP)
 ALLENDALE DAWN C62 (AI) (P)

Sire: **BOWEN CALIBRE K207 (AI) (ET) (PP)**

MAUNGAHINA KINGDOM BAY 070073 (IMP NZL) (P)

BOWEN HILDA F8 (AI) (P)

BOWEN HILDA A101 (AI) (P)

KARINA CHERRY Z8 (PP)

TYCOLAH GOLD RUSH (S)

TYCOLAH COUNTESS Z04 (P)

Dam: **RAYLEIGH M GOLDIE G19 (AI) (P)**

ALLENDALE POSEIDON Z110 (P)

RAYLEIGH M POSIE D33 (P)

RAYLEIGH M. IRIS X41 (P)

May 2019 Hereford GROUP BREEDPLAN

BW	200	400	600	MCW	Milk	SS	Cwt	EMA	Rib	RUMP	RBY%	IMF%
+6.9	+34	+57	+85	+91	+6	+2.8	+48	+4.2	+0.1	+0.0	+1.1	+0.6
70%	64%	59%	60%	52%	44%	58%	50%	44%	47%	50%	44%	47%
Selection Index Values:				S/Market: +\$85	Grass Fed Steer: +\$79			Grain Fed Steer: +\$94			EU: +\$97	

Traits Observed: CE,BWT,200WT

Notes: Another K207 daughter with loads of length and femininity. Full sister 2018 show team, maternal brother sold for \$16,000 at Dubbo National 2016. This heifer should continue to develop. Polled. EP 100/100.

Purchaser:

Price \$:.....

Lot 34 RAYLEIGH L CHANEL P9 (P)

Tattoo: P009

Rego No: AHCP009

Born: 08/04/2018

ALLENDALE WATERHOUSE D1 (PP)
 DAYS CALIBRE G74 (PP)
 ALLENDALE DAWN C62 (AI) (P)

Sire: **BOWEN CALIBRE K207 (AI) (ET) (PP)**

MAUNGAHINA KINGDOM BAY 070073 (IMP NZL) (P)

BOWEN HILDA F8 (AI) (P)

BOWEN HILDA A101 (AI) (P)

CANNAWIGRA COMMANDER Z51 (S)

WHIM PARK DESTROYER D035 (AI) (S)

NOROLLE V1 NIKKI Z78 (AI) (P)

Dam: **RAYLEIGH L DESIRE J65 (TW) (P)**

RILO PARK UNSHAKEABLE (AI) (ET) (P)

RAYLEIGH L UNITY F33 (P)

RAYLEIGH L UABBA A90 (P)

May 2019 Hereford GROUP BREEDPLAN

BW	200	400	600	MCW	Milk	SS	Cwt	EMA	Rib	RUMP	RBY%	IMF%
+7.0	+35	+60	+89	+96	+10	+2.5	+51	+4.3	-0.1	-0.5	+1.0	+0.8
60%	61%	57%	58%	50%	44%	58%	48%	42%	45%	49%	42%	45%
Selection Index Values:				S/Market: +\$87	Grass Fed Steer: +\$81			Grain Fed Steer: +\$99			EU: +\$99	

Traits Observed: 200WT

Notes: A K207 female with a bit of extra softness and muscle. This heifer takes that beautiful wedged shape, with loads of depth and a good hooded eye. Polled. EP 100/100.

Purchaser:

Price \$:.....

Lot 35 RAYLEIGH I CHANEL P17 (P)

Tattoo: P017

Rego No: AHCP017

Born: 12/04/2018

ALLENDALE WATERHOUSE D1 (PP)
DAYS CALIBRE G74 (PP)
ALLENDALE DAWN C62 (AI) (P)

Sire: **BOWEN CALIBRE K207 (AI) (ET) (PP)**

MAUNGAHINA KINGDOM BAY 070073 (IMP NZL) (P)
BOWEN HILDA F8 (AI) (P)
BOWEN HILDA A101 (AI) (P)
TYCOLAH H-BOMB (PP)
THE RANCH MARKSMAN H14 (P)
THE RANCH DUCHESS A37 (AI) (P)

Dam: **RAYLEIGH I MARVEL L38 (P)**

YAVENVALE BENCHMARK B278 (P)
RAYLEIGH I BELLA G93 (P)
RAYLEIGH I POSIE E19 (P)

May 2019 Hereford GROUP BREEDPLAN												
BW	200	400	600	MCW	Milk	SS	Cwt	EMA	Rib	RUMP	RBY%	IMF%
+6.5	+34	+58	+85	+84	+10	+2.8	+50	+4.5	+0.8	+1.2	+0.8	+0.9
62%	59%	58%	60%	52%	40%	57%	49%	43%	47%	51%	44%	47%
Selection Index Values:		S/Market: +\$100		Grass Fed Steer:+\$96			Grain Fed Steer:+\$116			EU: +\$112		

Traits Observed: 200WT

Notes: You have to admire the muscle pattern on this heifer, huge topline and great expression through the hind quarter, whilst still maintaining femininity. An easy doing heifer that would add a lot to any herd. Polled. EP 100/100.

Purchaser: Price \$:.....

Lot 36 RAYLEIGH S LILLY P25 (P)

Tattoo: P025

Rego No: AHCP025

Born: 17/04/2018

SOUTH BUKALONG WALLACE 2 (P)
YAVENVALE BENCHMARK B278 (P)
YAVENVALE MISS MINERVA W051 (AI) (H)

Sire: **RAYLEIGH LANDSLIDE L118 (TW) (P)**

RAYLEIGH ALBERTA A4 (AI) (P)
RAYLEIGH ALYSIA E103 (TW) (P)
RAYLEIGH L SHAMROCK A26 (P)
SOUTH BUKALONG WALLACE 2 (P)
YAVENVALE BENCHMARK B278 (P)
YAVENVALE MISS MINERVA W051 (AI) (H)

Dam: **RAYLEIGH S BELLA L108 (TW) (P)**

HEATHERDALE BONANZA Z48 (AI) (P)
RAYLEIGH S BONNIE E16 (AI) (P)
RAYLEIGH S UABBA Y49 (P)

May 2019 Hereford GROUP BREEDPLAN												
BW	200	400	600	MCW	Milk	SS	Cwt	EMA	Rib	RUMP	RBY%	IMF%
+1.7	+23	+35	+50	+31	+17	+1.8	+31	+1.6	+2.3	+3.6	-0.8	+0.7
67%	62%	55%	56%	47%	45%	50%	44%	37%	41%	43%	36%	41%
Selection Index Values:		S/Market: +\$93		Grass Fed Steer:+\$95			Grain Fed Steer:+\$110			EU: +\$103		

Traits Observed: BWT,200WT

Notes: A long, dark, soft skinned heifer. With femininity & a very good hooded eye. Heifers first calf. Polled. EP 100/100.

Purchaser: Price \$:.....

FOLLOWING LOTS TO BE SOLD IN LOTS OF TWO

Lot 37 **RAYLEIGH O LILLY P26 (P)**

Tattoo: P026

Rego No: AHCP026

Born: 18/04/2018

SOUTH BUKALONG WALLACE 2 (P)
YAVENVALE BENCHMARK B278 (P)
YAVENVALE MISS MINERVA W051 (AI) (H)

Sire: RAYLEIGH LANDSLIDE L118 (TW) (P)

RAYLEIGH ALBERTA A4 (AI) (P)
RAYLEIGH ALYSIA E103 (TW) (P)
RAYLEIGH L SHAMROCK A26 (P)
REMITALL BOOMER 46B (IMP CAN) (P)
RAYLEIGH HERCULES H24 (AI) (PP)
RAYLEIGH M UABBA Y47 (TW) (P)

Dam: RAYLEIGH O HELEN K66 (P)

DEBARRY TRIBULUS 2 (P)
RAYLEIGH O TIFFANY C80 (P)
TOOLANGATTA U101 THERESA W408 (AI) (P)

May 2019 Hereford GROUP BREEDPLAN												
BW	200	400	600	MCW	Milk	SS	Cwt	EMA	Rib	RUMP	RBY%	IMF%
+2.8	+26	+38	+52	+46	+18	+1.5	+31	+1.9	+0.8	+0.8	+0.2	+0.0
68%	60%	53%	55%	46%	42%	49%	42%	34%	39%	41%	34%	38%
Selection Index Values:		S/Market: +\$73		Grass Fed Steer: +\$72			Grain Fed Steer: +\$75			EU: +\$82		

Traits Observed: BWT,200WT

Notes: A stylish, long bodied, well put together heifer. Should develop into an appealing, roomy cow. Polled. EP 100/100.

SOLD AS A PAIR WITH LOT 38.

Purchaser: **Price \$:**

Lot 38 **RAYLEIGH R LILLY P39 (P)**

Tattoo: P039

Rego No: AHCP039

Born: 28/04/2018

SOUTH BUKALONG WALLACE 2 (P)
YAVENVALE BENCHMARK B278 (P)
YAVENVALE MISS MINERVA W051 (AI) (H)

Sire: RAYLEIGH LANDSLIDE L118 (TW) (P)

RAYLEIGH ALBERTA A4 (AI) (P)
RAYLEIGH ALYSIA E103 (TW) (P)
RAYLEIGH L SHAMROCK A26 (P)
TYCOLAH H-BOMB (PP)
THE RANCH MARKSMAN H14 (P)
THE RANCH DUCHESS A37 (AI) (P)

Dam: RAYLEIGH R MARVEL L64 (P)

RILO PARK UNSHAKEABLE (AI) (ET) (P)
RAYLEIGH R UNITY F51 (H#)
RAYLEIGH JANICE Y57 (P)

May 2019 Hereford GROUP BREEDPLAN												
BW	200	400	600	MCW	Milk	SS	Cwt	EMA	Rib	RUMP	RBY%	IMF%
+4.3	+30	+46	+67	+61	+17	+2.2	+37	+1.9	+0.4	+0.4	+0.6	+0.2
68%	60%	53%	54%	45%	40%	49%	41%	33%	37%	40%	33%	37%
Selection Index Values:		S/Market: +\$87		Grass Fed Steer: +\$84			Grain Fed Steer: +\$95			EU: +\$99		

Traits Observed: BWT,200WT

Notes: A growthy, feminine Landslide female with length of body & neck extension. A mobile heifer with a great head and eye.

Polled. EP 100/100. **SOLD AS A PAIR WITH LOT 37.**

Purchaser: **Price \$:**

Lot 39 RAYLEIGH L KARA P74 (P)

Tattoo: P074

Rego No: AHCP074

Born: 05/06/2018

CANNAWIGRA COMMANDER Z51 (S)
 MOUNTAIN VALLEY GAMBLER G14 (P)
 MOUNTAIN VALLEY B44 (P)

Sire: **MOUNTAIN VALLEY KARABAR K203 (AI) (ET) (PP)**

STRATHLEIGH TITANIC 34 (H)
 MOUNTAIN VALLEY SHAMROCK C12 (AI) (P)
 MOUNTAIN VALLEY SHAMROCK Z72 (AI) (P)

CANNAWIGRA COMMANDER Z51 (S)
 WHIM PARK DESTROYER D035 (AI) (S)
 NOROLLE V1 NIKKI Z78 (AI) (P)

Dam: **RAYLEIGH L DESIRE H32 (TW) (P)**

RAYLEIGH EXACT X5 (AI) (P)
 RAYLEIGH L XENA B28 (P)
 RAYLEIGH SUZIE 7 V38 (P)

May 2019 Hereford GROUP BREEDPLAN												
BW	200	400	600	MCW	Milk	SS	Cwt	EMA	Rib	RUMP	RBY%	IMF%
+5.8	+36	+62	+89	+86	+13	+2.0	+52	+3.1	+0.0	+0.1	+0.5	+0.1
69%	64%	58%	59%	50%	44%	57%	47%	39%	43%	46%	40%	42%
Selection Index Values:				S/Market: +\$71		Grass Fed Steer: +\$64		Grain Fed Steer: +\$69		EU: +\$76		

Traits Observed: CE,BWT,200WT

Notes: A soft and feminine heifer, with depth of body and length of quarter. A lovely gentle temperament. Polled. EP 100/100.
 SOLD AS A PAIR WITH LOT 40.

Purchaser: Price \$:.....

Lot 40 RAYLEIGH S KARA P91 (P)

Tattoo: P091

Rego No: AHCP091

Born: 26/06/2018

CANNAWIGRA COMMANDER Z51 (S)
 MOUNTAIN VALLEY GAMBLER G14 (P)
 MOUNTAIN VALLEY B44 (P)

Sire: **MOUNTAIN VALLEY KARABAR K203 (AI) (ET) (PP)**

STRATHLEIGH TITANIC 34 (H)
 MOUNTAIN VALLEY SHAMROCK C12 (AI) (P)
 MOUNTAIN VALLEY SHAMROCK Z72 (AI) (P)

ALLENDALE ANZAC E114 (PP)
 INJEMIRA ANZAC H003 (P)
 INJEMIRA HAPPY DAY C097 (P)

Dam: **RAYLEIGH S ANASTASIA L90 (P)**

BRAYBOOK FEDERER F448 (P)
 RAYLEIGH S FRED A J29 (AI) (P)
 RAYLEIGH S TIFFANY F68 (P)

May 2019 Hereford GROUP BREEDPLAN												
BW	200	400	600	MCW	Milk	SS	Cwt	EMA	Rib	RUMP	RBY%	IMF%
+8.6	+49	+80	+118	+110	+15	+2.3	+71	+4.3	+0.1	+0.2	+1.1	+0.2
70%	64%	58%	60%	50%	42%	55%	47%	39%	44%	47%	41%	43%
Selection Index Values:				S/Market: +\$93		Grass Fed Steer: +\$82		Grain Fed Steer: +\$92		EU: +\$98		

Traits Observed: CE,BWT,200WT

Notes: The youngest heifer in the sale. This heifer has loads of capacity and style. Good structure and natural thickness. Polled.
 EP 0/100. SOLD AS A PAIR WITH LOT 39.

Purchaser: Price \$:.....

Lot 41 RAYLEIGH L AVA P75 (ET) (P)

Tattoo: P075

Rego No: AHCP075

Born: 06/06/2018

ALLENDALE YACKA (AI) (P)
ALLENDALE ANZAC E114 (PP)
ALLENDALE DAWN B22 (AI) (ET) (P)

Sire: **INJEMIRA ANZAC H006 (PP)**

PINE HILL ERIK Y601 (AI) (S)
INJEMIRA MARINDA B028 (AI) (P)
INJEMIRA MARINDA Y065 (H)
SOUTH BUKALONG WALLACE 2 (P)
YAVENVALE BENCHMARK B278 (P)
YAVENVALE MISS MINERVA W051 (AI) (H)

Dam: **RAYLEIGH L BELLA H81 (P)**

RAYLEIGH ALBERTA A4 (AI) (P)
RAYLEIGH L ALYSIA F12 (P)
RAYLEIGH L POSIE C77 (TW) (P)

May 2019 Hereford GROUP BREEDPLAN													
BW	200	400	600	MCW	Milk	SS	Cwt	EMA	Rib	RUMP	RBY%	IMF%	
+4.0	+39	+64	+89	+74	+19	+2.5	+65	+4.4	+1.7	+2.5	+0.5	+0.9	
67%	63%	63%	63%	55%	52%	63%	53%	47%	50%	54%	47%	52%	
Selection Index Values:				S/Market: +\$122			Grass Fed Steer: +\$119		Grain Fed Steer: +\$138		EU: +\$132		

Traits Observed: BWT,200WT

Notes: An ET heifer out of a very high performing female here at Rayleigh. This is a long, soft and feminine heifer that should breed on. Polled. EP 100/100. **SOLD AS A PAIR WITH LOT 42.**

Purchaser: Price \$:.....

Lot 42 RAYLEIGH S KARA P85 (P)

Tattoo: P085

Rego No: AHCP085

Born: 18/06/2018

CANNAWIGRA COMMANDER Z51 (S)
MOUNTAIN VALLEY GAMBLER G14 (P)
MOUNTAIN VALLEY B44 (P)

Sire: **MOUNTAIN VALLEY KARABAR K203 (AI) (ET) (PP)**

STRATHLEIGH TITANIC 34 (H)
MOUNTAIN VALLEY SHAMROCK C12 (AI) (P)
MOUNTAIN VALLEY SHAMROCK Z72 (AI) (P)
SOUTH BUKALONG WALLACE 2 (P)
YAVENVALE BENCHMARK B278 (P)
YAVENVALE MISS MINERVA W051 (AI) (H)

Dam: **RAYLEIGH S BELLA L9 (P)**

RILO PARK UNSHAKEABLE (AI) (ET) (P)
RAYLEIGH S UNITY F86 (P)
RAYLEIGH S UABBA Y21 (P)

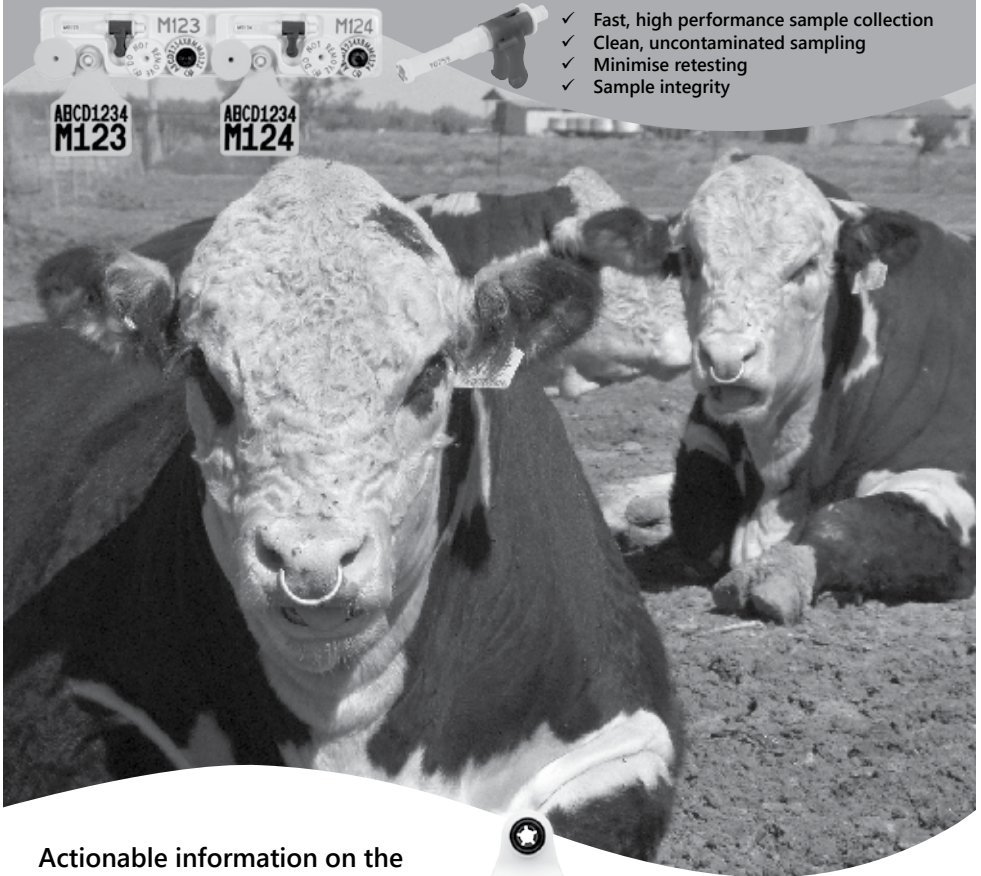
May 2019 Hereford GROUP BREEDPLAN													
BW	200	400	600	MCW	Milk	SS	Cwt	EMA	Rib	RUMP	RBY%	IMF%	
+6.5	+41	+70	+98	+86	+16	+2.2	+58	+3.1	+0.7	+1.3	+0.6	+0.5	
69%	64%	58%	60%	51%	44%	55%	48%	40%	44%	48%	41%	43%	
Selection Index Values:				S/Market: +\$98			Grass Fed Steer: +\$92		Grain Fed Steer: +\$106		EU: +\$106		

Traits Observed: CE,BWT,200WT

Notes: A very correct and feminine young Karabar female. Structurally sound with impeccable temperament. Polled. EP 100/100. **SOLD AS A PAIR WITH LOT 41.**

Purchaser: Price \$:.....

Quick, easy and reliable DNA sampling with TSU's (tissue sampling units)



- ✓ Fast, high performance sample collection
- ✓ Clean, uncontaminated sampling
- ✓ Minimise retesting
- ✓ Sample integrity

Actionable information on the reproduction, health and wellbeing of your herd, with SenseHub™ Beef.



Make data-driven decisions that lead to maximised productivity and improved beef herd breeding.

Innovative management tools for beef breeder operations.



Livestock Intelligence

Contact our customer service team on 1300 138 247 | customerservice@allflex.com.au



AuctionsPlus[®]

Australia's Livestock Marketplace

***Can't make the sale?
Log onto AuctionsPlus to bid from
anywhere on your phone, tablet or desktop.***

1

REGISTER ONLINE

Simply click 'Sign Up' to begin your free registration. To register as a buyer for livestock, you will need to provide us with a few more details.

2

COMPLETE BUYER INDUCTION

The buyer induction will help you understand the roles and responsibilities of everyone on the AuctionsPlus system.

3

VIEW CATALOGUE

Photos, videos, pedigrees and other information will be available in the online catalogue.

4

ENTER AUCTION

Log into the auction anytime, anywhere and bid on your mobile, tablet or computer.

5

AUTO BID

Can't stay for the whole sale? Set your maximum bid on the lot that you want to purchase and let the computer bid for you.

6

CONTACT SELLING AGENT

If successful, contact selling agent directly after the sale to arrange payment.

7

DELIVERY

Arrange transport of livestock at your expense.

*Contact AuctionsPlus on (02) 9262 4222
or www.auctionsplus.com.au*

NOTES



**2018 HEREFORD NATIONAL
SHOW & SALE DUBBO:
RAYLEIGH MONUMENT M50**

Purchased for \$20,000 by Eathorpe Poll Hereford Stud.



**2018 SALE TOPPER:
RAYLEIGH MOMENTOUS M101**

Purchased for \$10,000 by Paspaley Rural.



RAYLEIGH

POLL HEREFORDS

EST. 1957

The Holcombe family would like to thank all clients and prospective purchasers for their support of our Annual Bull & Female Sale.

We would like to wish you all success in the upcoming sale. Lunch will be available during the day and please stay on after the sale for refreshments.